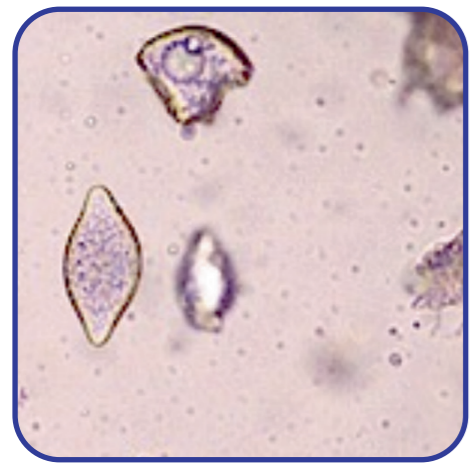




Parasites

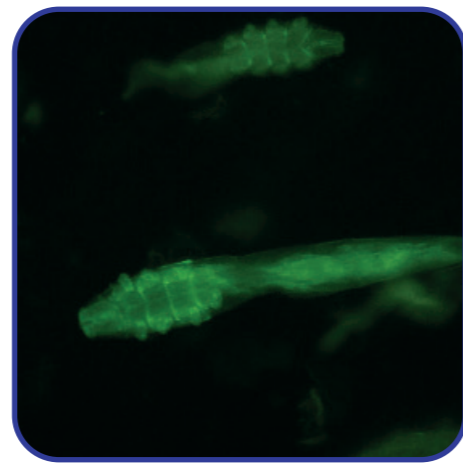
Ectoparasites



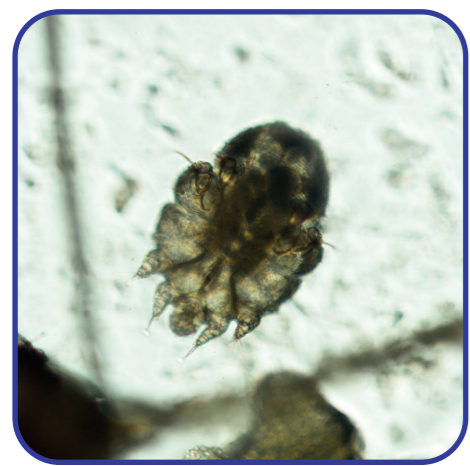
Demodex eggs



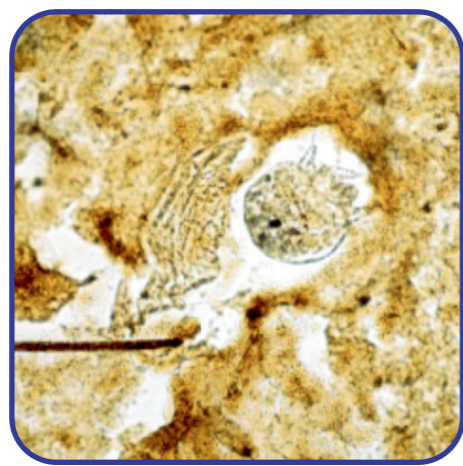
Demodex mites



Demodex autofluorescence



Sarcoptes scabiei



Notoedres cati



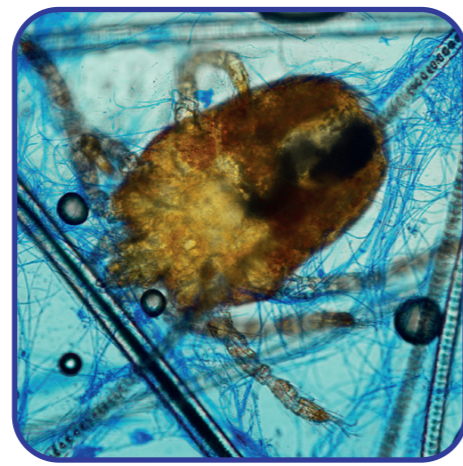
Cheyletiella parasitivorax



Psoroptes cuniculi



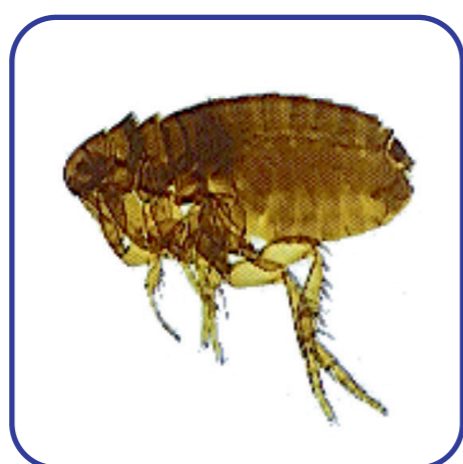
Otodectes cynotis



Neotrombicula autumnalis



Flea larvae & egg



Flea



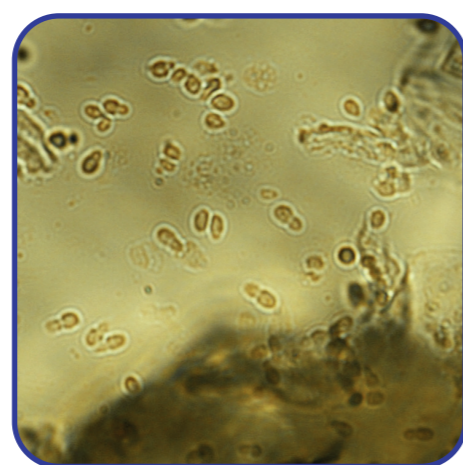
Louse



Biting louse

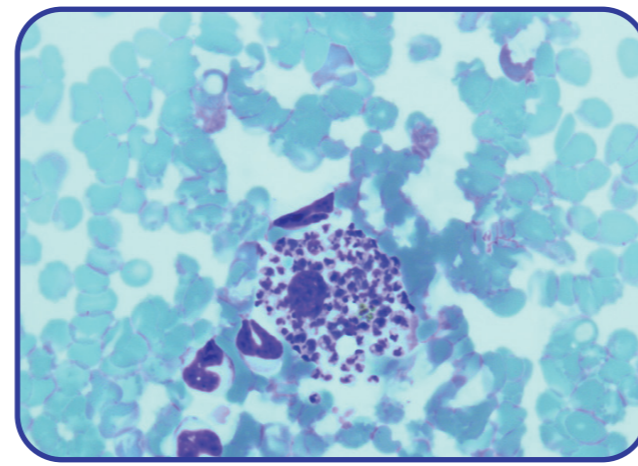


Tick

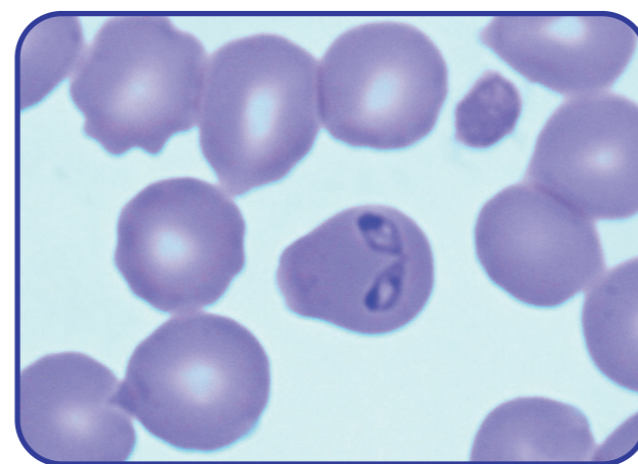


Malassezia pachydermatis

Blood Parasites



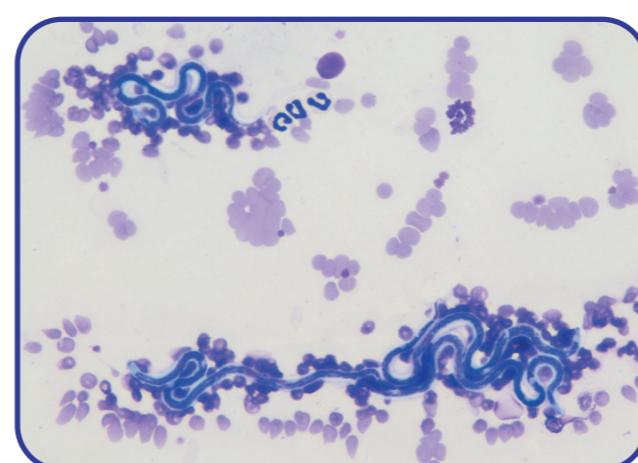
Leishmania species



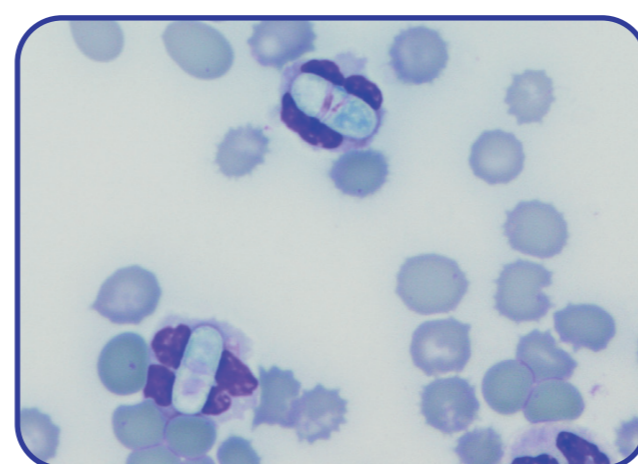
Babesia species



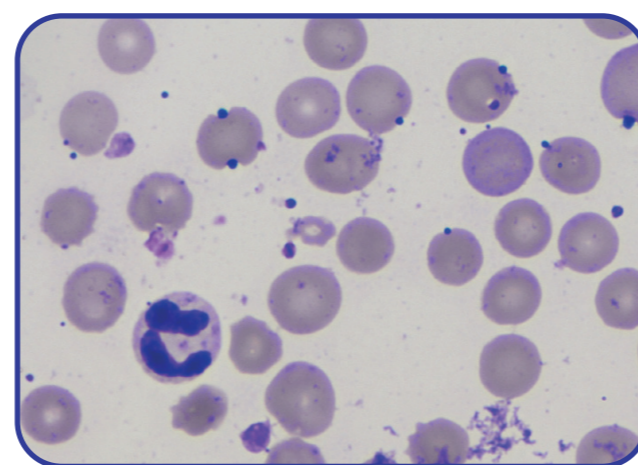
Anaplasma phagocytophilum



Microfilariae

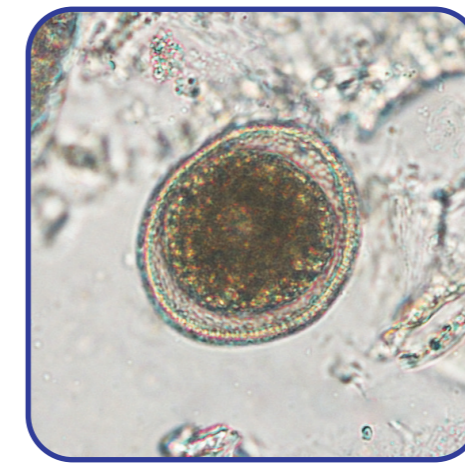


Hepatozoon species

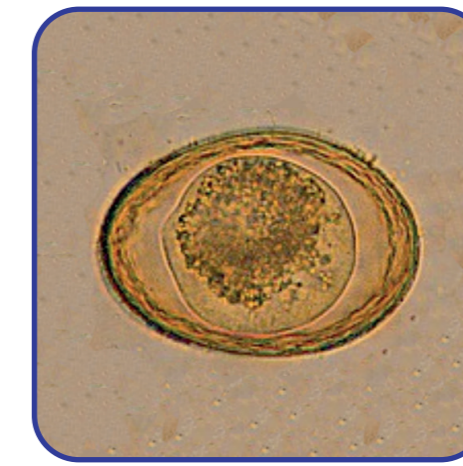


Mycoplasma haemofelis

Endoparasites



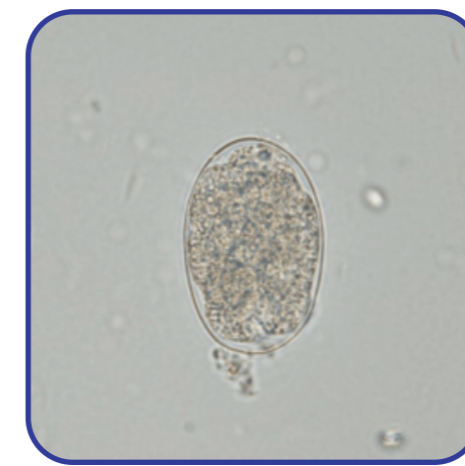
Toxocara species



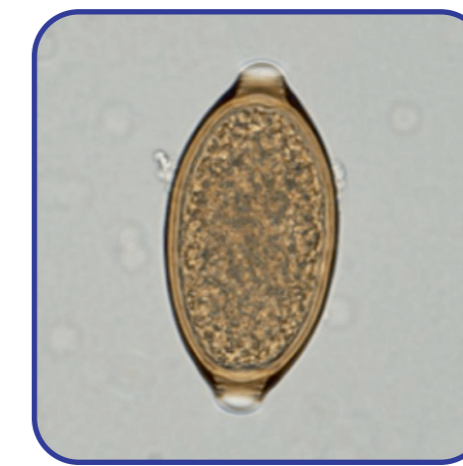
Toxascaris species



Parascaris equorum



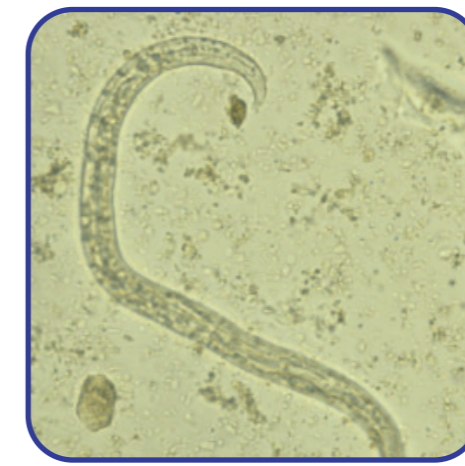
Ancylostoma species



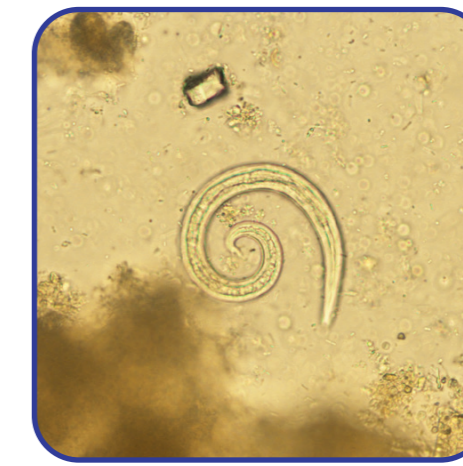
Trichuris species



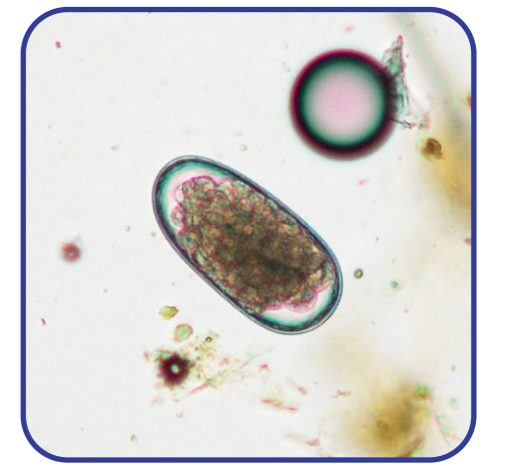
Eucolus species (Capillaria species)



Aelurostrongylus abstrusus



Angiostrongylus vasorum



Strongyle species



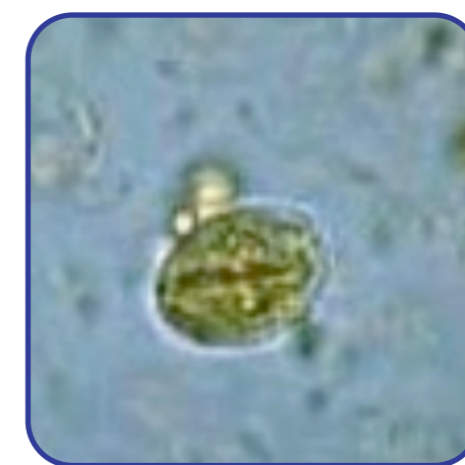
Taenia species



Dipylidium egg packet



Fasciola hepatica



Giardia species



Sarcocystis species



Cystoisospora species