



## Your Partner in Equine Diagnostics

### Profiles & Hormones

- **Equine Large Screening:**

Ca, Na, Phos, Mg, Se, Zn, Cu, K, triglycerides, Fe, AP, GGT, bilirubin, cholesterol, glucose, AST, LDH, GLDH, CK, total protein, albumin, globulin, urea, creatinine

- **Health Screen:**

FBC, total protein, albumin, globulin, fibrinogen, urea, creatinine, Na, Cl, K, ALP, GGT, AST, CK, glucose

- **Systemic Disease Profile:**

FBC, total protein, albumin, globulin, fibrinogen, urea, creatinine, Na, Cl, K, Phos, Ca, ALP, GGT, AST, total bilirubin, bile acids, CK, glucose

- **PPID Profile** (diagnosing Equine Cushings) **and EMS Profile** - dedicated profiles for endocrine disorders

- **Oestrone sulphate** (diagnosing pregnancy)

- **Anti-Mullerian hormone (AMH)**

(diagnosing Cryptorchidism/ovarian tumour)  
please contact us prior to shipment



### Microbiology

including antibiogram with up to 35 antibiotics by microdilution method according to CLSI/EUCAST

### Infectious diseases

- **Equine Respiratory Profile – I**

PCR Tests: EHV1,4+5 Influenza A virus, Strep. equi equi / zooepidemicus  
In cases of EHV1 positive: we automatically run PCR test for the neurological form – free of charge

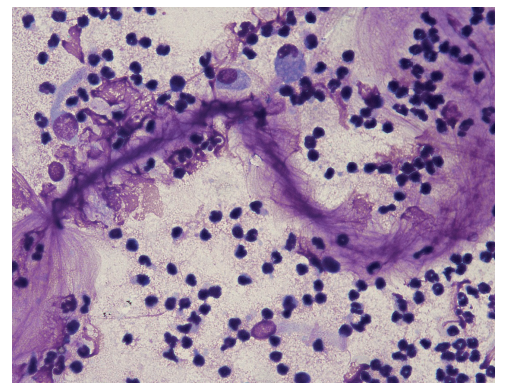
- **Equine Respiratory Profile – II**

EHV1+4, Influenza A virus, Strep. equi equi, Equine Coronavirus

- **Streptococcus equi equi / zooepidemicus PCR**

- **Equine Abortion PCR Profile**

EHV1+4, EVA, Leptospira species



### Cytology and Histology

(provided by Board Certified Veterinary Pathologists)

Including TW/BAL examination, FNA, uterus and skin biopsies etc.

### Genetic testing

WFFS, PSSM type 1, HYPP and many more

### Allergy

- **Various environmental and food profiles available**
- **Immunotherapy – subcutaneous and sublingual**

### Professional advice

Our specialists can be easily reached by phone or email to discuss difficult cases and to provide any advice you may require.

As of: May 2021

Picture credits: Pixabay, BattLab; Laboklin