



**BattLab**  
member of the **LABOKLIN** family

Quality Veterinary Diagnostics  
from disease to optimal health

## Diagnostics for equine made easier

### Equine profiles

#### ■ Health Screen:

CBC, total protein, albumin, globulin, fibrinogen, urea, creatinine, Na, Cl, K, ALP, GGT, AST, CK, glucose

#### ■ Systemic Disease Profile:

CBC, total protein, albumin, globulin, fibrinogen, urea, creatinine, Na, Cl, K, Phos, Ca, ALP, GGT, AST, total bilirubin, bile acids, CK, glucose

### Dedicated profiles for PPID and equine metabolic syndrome

(including endogenous ACTH, dexamethasone suppression test, insulin, PMSG, oestrogen sulphate and dedicated profiles from PPID and equine metabolic syndrome)

### Microbiology, Faecal examination and Urinalysis

### Cytology and Histology

(provided by Board Certified Veterinary Pathologists)  
Including tracheal wash (TW)  
and Bronchoalveolar lavage (BAL) examination

### Serology and PCR testing

(including Equine Herpes Virus (1-5), Streptococcus equi (Strangles), Influenza Virus and special PCR profiles (equine eye profiles, equine respiratory profile, equine abortion profile))

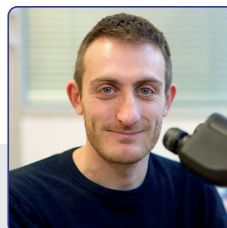
### Genetic testing

For specific diseases or conditions, coat colours and length

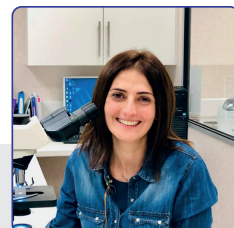


### Professional advice

Our specialists can be easily reached by phone or email to discuss difficult cases and to provide any advice you may require



**Francesco Cian**  
DVM DipECVCP FRCPath MRCVS  
RCVS Specialist in Veterinary  
Clinical Pathology Pathologist



**Lucia Sanchini**  
DVM DipECVCP FRCPath  
MRCVS Specialist in Veterinary  
Clinical Pathology Pathologist