



BattLab
member of the **LABOKLIN** family

Quality Veterinary Diagnostics
from disease to optimal health

Dermatology made easier

Demodex PCR

Semi-quantitative real-time PCR for detection of:
D. canis, D. injai, D. cornei - D. cati, D. gato, D. felis
(deep scraping)

Sarcoptes PCR

Real-time PCR for detection of:
Sarcoptes scabiei var. canis, ideal for therapy control
(superficial scraping)

Dermatophyte PCR

PCR for detection of:
M. canis, M. gypseum, M. persicolor, T. mentagrophytes,
T. equinum, species differentiation in positives available

Cytology, Histology

European and American Boarded specialists
in Clinical Pathology and Anatomic Pathology,
high quality results and fast turnaround time

Immunotherapy

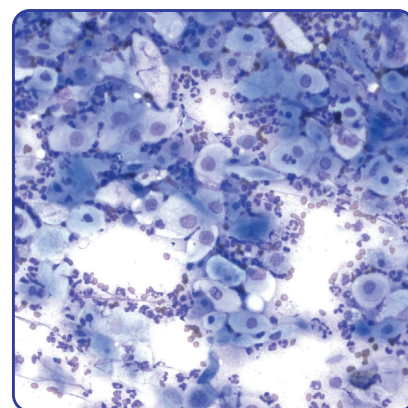
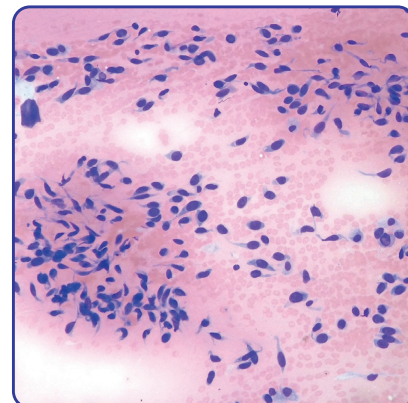
Broad spectrum of allergy tests available. FcEpsilon
technology. Injectable and sublingual immunotherapy

Bacteriology, Mycology, Parasitology

Identification of most clinically relevant microorganisms,
including antibiotic sensitivity. MALDI-TOF identification

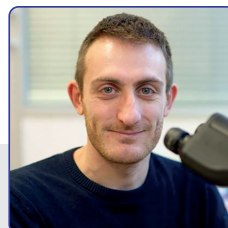
Endocrinology

All relevant hormones including dynamic tests



Professional advice

Our specialists can be easily reached by phone
or email to discuss difficult cases and to provide
any advice you may require



Francesco Cian
DVM DipECVCP FRCPath MRCVS
RCVS Specialist in Veterinary
Clinical Pathology Pathologist



Lucia Sanchini
DVM DipECVCP FRCPath
MRCVS Specialist in Veterinary
Clinical Pathology Pathologist