













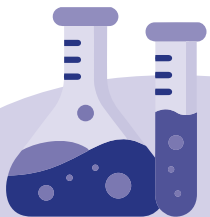
Price List 2025



TABLE OF CONTENTS



 General information..... 3	 Cytology/Histology..... 10
 Small Mammal, Avian and Reptile Profiles 6	 Microbiology/Dermatology..... 12
 Haematology..... 7	 Infectious Diseases – serology..... 15
 Endocrinology..... 8	 Infectious Diseases – PCR..... 17
 Urinalysis..... 9	 Index.....25



GENERAL INFORMATION



GET STARTED

BattLab was established in 2005 with the aim of providing veterinary surgeons with a personalised, high-quality diagnostic laboratory service to enable them to make accurate assessments of their patients' health, from disease to optimal health. We offer a wide range of services, including routine clinical pathology investigations, as well as novel gastroenterology, genetics, infectious disease, and allergy panels to ensure that we can cater to all your needs.

HOW TO SEND SAMPLES

You will need to download a submission form from our website and send it completed along with the sample to our laboratory. If you do not see the test you want on our submission form, do not worry, it is very likely we can still offer it. Check our price list or feel free to give us a call.

There are no contracts to sign and you can use our services on demand and as often as you wish. We will always do our best to provide you with rapid, efficient and high-quality service.

COURIER SERVICE

We offer a **free national courier service** across mainland UK (excluding the Scottish Highlands). For our local clients, we provide same-day collections and deliveries which enables us send out many results on the same day. Our national courier service offers daily collections with samples delivered to us by 10am the following morning.

You can now **book collections online** through our website or call us on 0247 632 3275. If you prefer, you can download our postage label for free from our website. This will save you the time to write the address on the parcel and the money to ship the sample.





REPORTING AND CONSULTATION

Reports are sent to our clients via email. We provide same-day turnaround time for many tests such as haematology, biochemistry, endocrinology, cytology, calculus analysis, selected ELISA and PCR testing. Please note that in rare cases, turnaround times longer than a day may be affected by unforeseen delays due to the need to export samples to our main laboratory located in Germany.

Each report is accompanied by a written comment/interpretation provided by our team of experts. Our pathologists are always available for **further discussions** over the phone. The consultation and interpretation services that we provide are strictly on a professional-to-professional basis. The test protocols and interpretations are based on recommendations from current veterinary literature and our vast experience. Nevertheless, it is crucial to consider test results and advice along with physical examination and other patient information collected by the primary care veterinary surgeon who has the ultimate responsibility for making decisions regarding diagnosis and treatment.

LABORATORY SUPPLIES

We provide a range of **free laboratory supplies** to our clients on request. These supplies include blood tubes such as EDTA, serum, sodium citrate, and oxalate fluoride, as well as swabs, universals, faecal pots, histology pots, and biohazard bags.

If you are a new customer, you can request a starter kit that contains all the necessary laboratory supplies and informative materials by sending us an email at admin@battlab.com. For those clients that are outside our local courier run, a shipping fee is applied.

TERMS AND CONDITIONS

Please visit the link www.battlab.com/terms-and-conditions.



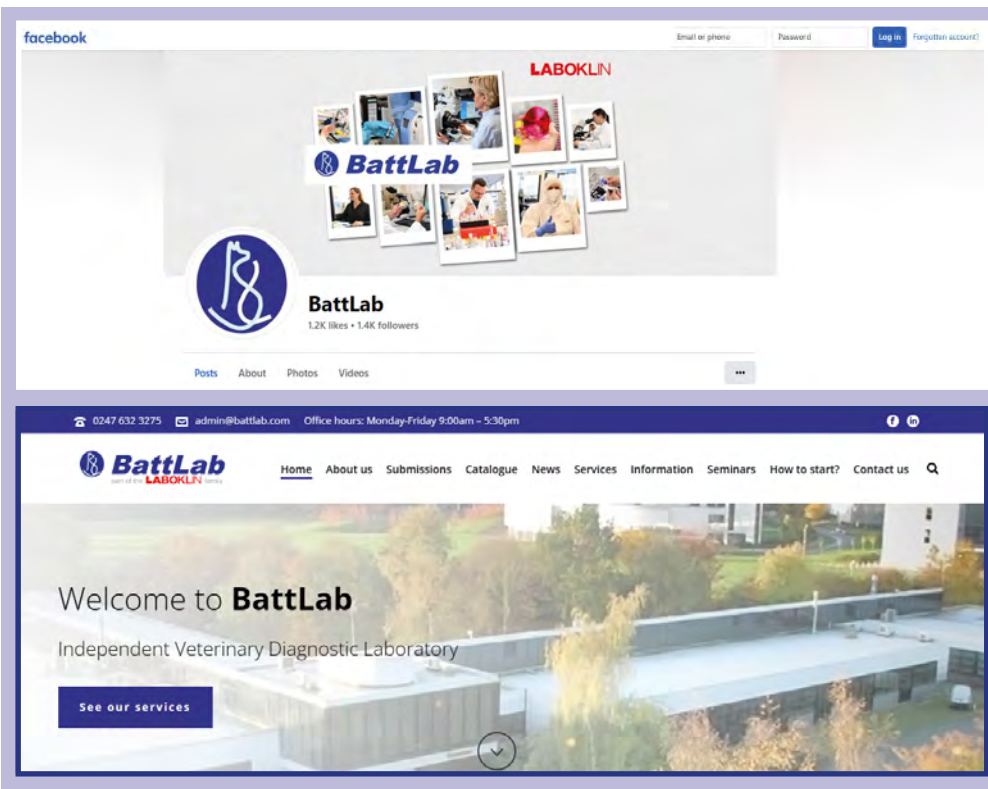
*BattLab is proud of supporting Guide Dogs,
West Midlands Police dog unit and Vets in the Community*





ACTIVITIES

At Battlab, we strongly believe that a truly progressive and dynamic laboratory should provide more than just sample testing. To keep you informed about all our latest news, announcements and information, we have various online platforms, including our website, newsletter, Facebook and LinkedIn pages. We encourage you to check them out!



You can easily access our online platforms by scanning the QR code below. Additionally, it can be used to sign up for our monthly newsletter on our website.



In addition to our online presence, we organise free seminars and webinars, give lectures at international conferences and attend veterinary congresses as exhibitors and speakers. Each of these activities has a different focus, but they all share the same aim - to engage the veterinary community in important discussions about disease management and prevention.



SMALL MAMMAL, AVIAN AND REPTILE PROFILES



All tests include full reporting unless otherwise stated

Profiles	Includes	Code	Sample	Comments	Turnaround
Rabbit/Small mammal 1 profile	FBC, total protein, albumin, globulin, urea, creatinine, Na, Cl, K, ALP, ALT, bilirubin, glucose	RB1	EDTA, serum, Ox-F, blood smear		Same day
Rabbit/Small mammal 2 profile	FBC, total protein, albumin, globulin, urea, creatinine, Na, Cl, K, P, Ca, ALP, GGT, ALT, AST, bilirubin, bile acids, cholesterol, triglycerides, CK, glucose	RB2	EDTA, serum, Ox-F, blood smear		Same day
Ferret screening profile	FBC, total protein, albumin, globulin, urea, creatinine, ALT, ALP, glucose, fructosamine, CK, triglycerides	FS1	EDTA, serum, Ox-F, blood smear		Same day
Hedgehog profile	FBC, total protein, urea, creatinine, ALT, Baermann test (lungworm)	WH1	EDTA, serum, blood smear, fresh faeces.		Same day. Up to 1 day for Baermann
Avian 1 profile	FBC, total protein, albumin, globulin, uric acid, Na, Cl, K, GGT, AST, CK, glucose	AV1	0.5 - 1.0 ml heparinized whole blood, blood smear		1 day
Avian 2 profile	FBC, total protein, albumin, globulin, uric acid, Na, Cl, K, P, Ca, GGT, AST, bile acids, cholesterol, CK, glucose	AV2	0.5 - 1.0 ml heparinized whole blood, blood smear		1 day
Reptile 1 profile	FBC, total protein, uric acid, Ca, P, GLDH, ALP	REP1	0.5 - 1.0 ml heparinized whole blood, blood smear		1 day. Up to to 4 days for GLDH
Reptile 2 profile	FBC, total protein, uric acid, Ca, P, Na, K, GLDH, ALP, ALT, AST, bile acids, CK, triglycerides, cholesterol, urea	REP2	0.5 - 1.0 ml heparinized whole blood, blood smear		1 day. Up to to 4 days for GLDH
NEW! Fish profile	ALT, AST, ALP, GGT, bile acids, CK, total protein, cholesterol, urea, P, Ca, K, Na	FIS1	0.5 - 1.0 ml heparinized whole blood, blood smear		Up to 4 days

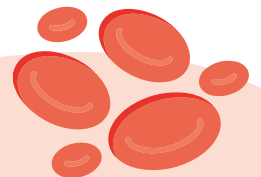


HAEMATOLOGY



All tests include full reporting unless otherwise stated

Profiles	Includes	Code	Sample	Comments	Turnaround
Complete blood count	White blood cell count, red blood cell count, platelet count, haemoglobin, HCT, MCV, MCHC, MCH, RDW, leukocyte differential count, morphology assessment, reticulocyte count (when appropriate and/or requested)	FBC1	EDTA, blood smear		Same day
Avian blood count	PCV, haemoglobin, leukocyte estimate and differential count, platelet, comment. Morphology assessment	FBC2	EDTA or heparin, blood smear		Up to 1 day
Reptile blood count	PCV, haemoglobin, leukocyte estimate and differential count, platelet, comment. Morphology assessment	FBC3	EDTA or heparin, blood smear		Up to 1 day
Blood smear examination		FILM	Blood smear	Blood smears submitted without whole blood are examined by highly trained haematology technicians. If a CBC was performed on an in-clinic analyzer, please send results from the analyser along with the blood smears to facilitate interpretation by the pathologist.	Same day

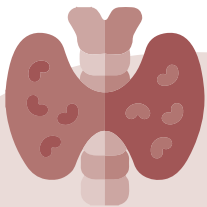


ENDOCRINOLOGY



All tests include full reporting unless otherwise stated

Profiles	Includes	Code	Sample	Comments	Turnaround
Total T4		K9T4/ T4	Serum	No gel tubes	Same day
Total T4, urea, creatinine		T4UC	Serum	No gel tubes	Same day
Cortisol		COR	Serum	No gel tubes. Used as a screening test for hypoadrenocorticism or pre-trilostane dosing for monitoring hyperadrenocorticism	Same day
Urine cortisol:creatinine ratio		UCCR	Urine	Used as a screening test for hyperadrenocorticism. Clean, cystocentesis collected sample is preferred	3-4 days
Ferret adrenal profile		FERC	Serum preferably frozen	17 Hydroxyprogesterone, androstenedione, oestradiol	~1 week
Salivary cortisol		SACO	Saliva	Guinea pig	~1 week



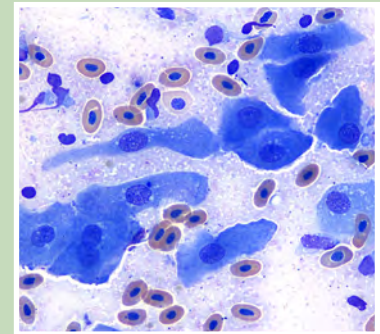
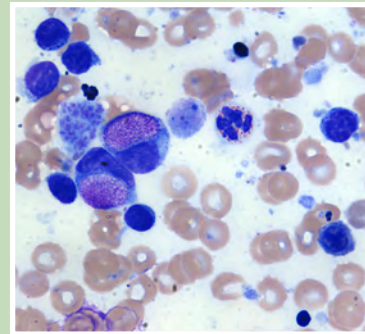
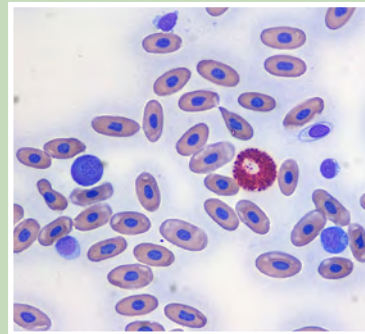
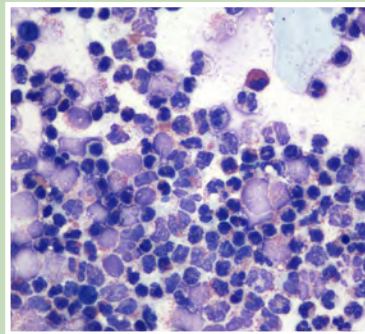
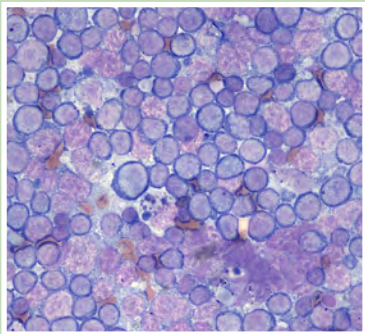
URINALYSIS



All tests include full reporting unless otherwise stated

Profiles	Includes	Code	Sample	Comments	Turnaround
Standard urinalysis	Sediment examination (unstained preparation examined by an experienced technician), specific gravity, protein, glucose, ketones, pH (meter), heme, bilirubin	UR1	5 ml urine, plain		Same day
Standard urinalysis with urine protein:creatinine ratio	UR1 plus UPCR	UR2	5 ml urine, plain		Same day
Standard urinalysis with aerobic bacterial culture and sensitivity	UR1 plus CUL1 (Aerobic bacterial culture and antibiotic sensitivities)	UR3	5 ml urine, plain and boric acid	Fill tube to the black arrow mark to avoid high boric acid concentration	Same day. 1-5 days for culture
Comprehensive urinalysis	UR1 plus UPCR and CUL1 (Aerobic bacterial culture and antibiotic sensitivities)	UR4	5 ml urine, plain and boric acid	Fill tube to the black arrow mark to avoid high boric acid concentration	Same day. 1-5 days for culture
Urine culture and sensitivity	Aerobic bacterial culture and antibiotic sensitivities	CUL1	5 ml urine, boric acid	Fill tube to the black arrow mark to avoid high boric acid concentration	1-5 days
Urine protein:creatinine ratio (UPC)		UPCR	Minimum of 1 ml urine in plain tube		Same day
Urine cortisol:creatinine ratio		UCCR	5 ml urine, plain		2-4 days
Urine cytology	Cytological examination of urine or prostatic washes. Performed by a clinical pathologist on stained smears obtained by sediment preparation or cytocentrifugation. Recommended if suspicion for neoplasia	CYTU	5 ml urine, plain and EDTA tubes, air-dried urine sediment slides		Same day
Urine cytology (when added to a UR profile)	as above	CYU+	as above		Same day
Fractional excretion	Can be performed for Sodium, Chloride, Potassium, Calcium or Phosphorus	FRAC	Serum and urine		2-4 days
Calculus analysis		CALC	Dry calculus	Separate composition of shell and core and calculus is available upon request (+£10) Minimum size of 2cm is required..	1 day





Batt Laboratories offers a comprehensive cytology service for all domestic species provided by experienced clinical pathologists.

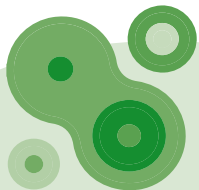
Cytology is a rapid, simple, safe and cost-effective diagnostic method for the diagnosis of a spectrum of inflammatory and neoplastic diseases.

The turnaround time for all our cytology submissions is typically within 24 hours of receipt of the sample. Our clinical pathologists are also readily available to discuss results and to give further advice. Samples may be submitted as air-dried smears or fluid for processing.

Here are a few tips you should find helpful when submitting samples for cytology:

- **Clinical history and location** are vitally important in interpreting cytology samples. Submission forms should include a brief clinical history, site of collection and appearance of the lesion/organ sampled. Slides should have frosted ends to enable them to be appropriately labelled (patient name, site of aspiration) - this is particularly relevant when submitting samples from multiple lesions.
- **Exposure to formalin** of any kind renders samples un-readable using the traditional Romanowsky stain - cytology samples should therefore be sent in a sealed bag, separate from any biopsy specimens in formalin.
- When submitting **fluid samples** of any kind, it is best to provide both EDTA and plain tubes samples, as well as one or two air-dried direct smears.
- In cases where **bacterial culture** of a fluid may be required, a separate sample (in a plain tube) must be provided.
- **Bone marrow aspirates** should always be submitted with a concurrent EDTA blood sample (or no longer than 24h difference between sampling times). Bone marrow interpretation is frequently not possible in the absence of concurrent peripheral blood evaluation.

... Please don't hesitate to call for clarification of our assays and services, including sampling protocols or to discuss any additional requirements.



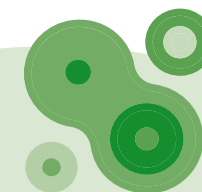
CYTOLOGY/HISTOLOGY



All tests include full reporting unless otherwise stated

Profiles	Includes	Code	Sample	Comments	Turnaround
Cytology (FNA/ smears) 1-2 sites		CYT	Air dried smears	Up to 2 sites from the same animal and up to 6 slides.	Up to 1 day
Cytology (FNA/ smears) 3-4 sites		CYT3	Air dried smears	3 to 4 sites from the same animal and up to 12 slides	Up to 1 day
Cytology (FNA/ smears) 5-6 sites		CYT5	Air dried smears	5 to 6 sites from the same animal and up to 18 slides	Up to 1 day
Cytology (fluid filled masses)		CYTF	Fluid	Submit fluid in both EDTA and plain tubes + 1-2 direct smears	Up to 1 day
Cytology (cavitary effusions)	Including cytology, total protein, albumin, globulin (cholesterol and triglyceride when appropriate)	EFF	Fluid + air dried smears	Submit fluid in both EDTA and plain tubes + 1-2 direct smears	Up to 1 day
Cytology (CSF)	Including cytology, total protein, total nucleated cell count, total red blood cell count	CCSF	Fluid + air dried smears	Submit fluid in EDTA and/or plain tubes	Up to 1 day
Cytology (synovial fluid)		SYN1	Fluid + air dried smears	Submit fluid in EDTA tube + 1-2 direct smears. Up to 2 sites	Up to 1 day
Cytology (synovial fluid)		SYN2	Fluid + air dried smears	Submit fluid in EDTA tube + 1-2 direct smears. 3 or more sites.	Up to 1 day
Cytology (urine/ prostatic wash)		CYTU	Urine/prostatic lavage	Submit 5ml fresh urine sample/prostatic wash in plain and EDTA tubes	Up to 1 day
Cytology (bronchoalveolar lavage/transtracheal wash)		BAL	Bronchoalveolar lavage/ transtracheal wash	Submit fluid in both EDTA and plain tubes + 1-2 direct or sediment smears	Up to 1 day
Bone marrow cytology		BM1	Air dried smears + EDTA tube	Submit concurrent EDTA sample of peripheral blood (haematology + £25)	Up to 1 day
Histopathology		HI1	Tissue in formalin	Up to 4 tissues or anatomic sites from the same animal, less than 4cm in size.	3-4 days
Histopathology (multiple or large sites)		HI2	Tissue in formalin	5 or more tissues or anatomic sites from the same animal or lesions over 4cm in size	3-4 days

PLEASE NOTE: Any and all cytology slides should be packaged and submitted separately from histology samples as any exposure to formalin fumes can markedly alter cell morphology potentially rendering the sample non-diagnostic. **DO NOT** add formalin to any fluid samples being submitted for cytology. Turnaround time for histopathology may be longer than 4 days if the sample require further fixation or decalcification.





- We identify both aerobic and anaerobic bacteria, if needed by **Matrix-Assisted Laser Desorption/Ionization Time-of-Flight Mass Spectrometer (MALDI-TOF)**. This technology generates characteristic mass spectral fingerprints, that are unique signatures for each microorganism and are this ideal for an accurate microbial identification at the genus and species level.
- **Extensive antibiotic sensitivity panels** tailored on the isolated bacteria. These are performed with microdilution technology providing **minimum inhibitory concentration (MIC)** for selected antibiotics based on Clinical and Laboratory Standards Institute (CLSI) guidelines and European Committee on Antimicrobial Susceptibility Testing (EUCAST). This quantitative method of susceptibility testing helps determine which class of antibiotic is most effective. This information can lead to an appropriate choice of an antibiotic that will increase chances of treatment success and help in the fight to reduce antibiotic resistance.
- **Fungal cultures** including Dermatophytes.
- **Serology and PCR tests** for selected bacteria and fungi.

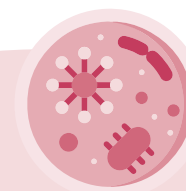


MICROBIOLOGY



All tests include full reporting unless otherwise stated

Profiles	Includes	Code	Sample	Comments	Turnaround
Aerobic culture	Aerobic bacterial cultures, systemic and topical (where appropriate) antibiotic sensitivities	CUL1	Charcoal swab		1-5 days
Aerobic culture additional site	Aerobic bacterial cultures, systemic and topical (where appropriate) antibiotic sensitivities	CU1+	Charcoal swab	Unless otherwise stated on the submission form, if more than 1 swab is submitted, these will be tested separately.	1-5 days
Aerobic and anaerobic culture	Aerobic and anaerobic bacterial cultures, yeasts culture, systemic and topical (where appropriate) antibiotic sensitivities	CUL2	Charcoal swab		1-5 days. Up to 10 days for anaerobic
Aerobic and anaerobic culture additional site	Aerobic and anaerobic bacterial cultures, yeasts culture, systemic and topical (where appropriate) antibiotic sensitivities	CU2+	Charcoal swab	Unless otherwise stated on the submission form, if more than 1 swab is submitted, these will be tested separately.	1-5 days. Up to 10 days for anaerobic
Blood culture	Aerobic and anaerobic bacterial cultures, systemic antibiotic sensitivities	BC&C	Culture media jar supplied upon request	1-5 ml of blood, depending on animal's size	Up to 14 days
Environmental culture (qualitative)	Aerobic bacterial cultures	CULS	Charcoal swab, contact plate, dry swab *	MRSA culture if Staphylococcus aureus is identified (* Wet the dry swab in sterile saline/PBS solution and swab the area. £15 per each additional swab)	1-5 days
Environmental culture extended (up to 2 sites)	Aerobic bacterial cultures, Salmonella culture, Campylobacter culture	CUL+	Charcoal swab, contact plate, dry swab *, for further enquiries please contact the lab	MRSA culture if Staphylococcus aureus is identified (* Wet the dry swab in sterile saline/PBS solution and swab the area. £20 per each additional swab)	1-5 days
Faecal parasites and bacterial pathogens	Faecal parasites and bacterial pathogens	GE9	Fresh faeces	All species	1-4 days
Faecal bacterial pathogens	Aerobic bacterial cultures, Salmonella culture, Campylobacter culture	GE10	Fresh faeces	All species	1-5 days
Nocardia, Actinomyces culture		NAC	Charcoal swab		Up to 2 weeks
Urine culture and sensitivity	Aerobic bacterial culture and antibiotic sensitivities	CUL1	5 ml urine, boric acid	Fill tube to the black arrow mark to avoid high boric acid concentration	1-5 days





All tests include full reporting unless otherwise stated

Profiles	Includes	Code	Sample	Comments	Turnaround
Fungal culture		FUNG	Skin scraping, plucked hairs, skin/ear swab		3-5 days
Dermatophytes culture		DERC	Skin scraping, plucked hairs	May take 2-4 weeks for growth	Up to 4 weeks
Dermatophytes PCR	PCR detection of <i>M. canis</i> , <i>M. gypseum</i> , <i>M. persicolor</i> , <i>T. mentagrophytes</i> , <i>T. equinu</i> , <i>Trichophyton</i> species of <i>Arthroderma benhamiae</i> , <i>Trichophyton equinum</i> , <i>Trichophyton verrucosum</i> , <i>Trichophyton erinacei</i>	DERP	Skin scraping, plucked hairs	Species differentiation possible in positive cases (+£40)	3-5 days
Skin microscopy (scraping)/trichogram/ear microscopy		DER1	Skin scraping, hairs, dry ear swab	Per site and up to 2 slides	Same day
Skin microscopy (scraping) and Dermatophyte culture		DER2	Skin scraping, plucked hairs, skin swab, ear swab		Same day. Up to 4 weeks for Dermatophytes
UPDATED! Skin microscopy (scraping)/ear microscopy, fungal and bacterial culture		DER3	Skin scraping, plucked hairs, skin swab, ear swab	All the samples are cultured separately Samples from different sites of collection will be cultured separately	Same day. 1-5 days for bacterial culture
UPDATED! Skin microscopy (scraping)/ear microscopy, fungal and bacterial culture and Dermatophyte culture		DER4	Skin scraping, plucked hairs, skin swab, ear swab	All the samples are cultured separately Samples from different sites of collection will be cultured separately	Same day. 1-5 days for bacterial culture. Up to 4 weeks for Dermatophytes

NOTES: Please avoid submitting skin scrapings with oil, if possible. Charcoal swabs should be used for microbiology culture unless otherwise indicated. Culture results are accompanied by MALDI-TOF identification when appropriate or when specifically requested. Sensitivity panels are tailored according to species, site and organism isolated and are included in the cost of the culture test. If specific antibiotics are required, please indicate this clearly in the clinical information box. These will be performed, where possible. An extra charge will be applied.



ANTIGEN/ANTIBODY TESTING - AVIANS



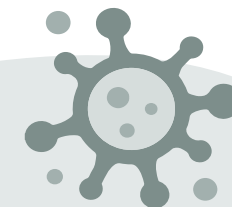
All tests include full reporting unless otherwise stated

Profiles	Includes	Code	Sample	Comments	Turnaround
Aspergillus antibodies		ASPS	Serum	MAT	2-4 days
Aspergillus galactomannan antigens		ASPG	Serum	ELISA	1 week
Bornavirus antibodies		SBOR	Serum	ELISA	Up to 10 days
Chlamydia antibodies		CHB	Serum	IFAT	2-4 days
Herpes virus antibodies (Pacheco's disease)		SPAC	Serum	VNT	2 weeks
Paramyxovirus aPMV-1 antibodies (Newcastle disease)		NEWD	Serum	HAH	2 weeks
West Nile Virus antibodies (IgG)		WNV	Serum	ELISA	1 week

ANTIGEN/ANTIBODY TESTING - SMALL MAMMALS

All tests include full reporting unless otherwise stated. Sample - 1ml unless indicated.

Profiles	Includes	Code	Sample	Comments	Turnaround
Adenovirus antibodies		GAV	Serum	Rabbit, guinea pig, rat, mouse (IFAT)	1 week
Cytomegalovirus antibodies		CMV	Serum	Mouse, rat, guinea pig (IFAT)	1 week
Dirofilaria antigens		DIR	EDTA	Ferret (ELISA)	2-4 days
Distemper virus antibodies		CDV	Serum	Ferret, racoon (IFAT)	2-4 days
Encephalitozoon cuniculi antibodies (IgG)		ECUN	Serum	Rabbit, guinea pig (IFAT)	2-4 days
Encephalitozoon cuniculi antibodies (IgG+IgM)		ECU2	Serum	Rabbit, guinea pig (IFAT)	2-4 days
Ferret coronavirus serology		FCOV	Serum	ELISA	1 week
Hantavirus antibodies		HANT	Serum	Rat, mouse (IFAT)	1 week
Lymphocytic choriomeningitis virus antibodies		LCVM	Serum	Guinea pig, mouse, hamster (IFAT)	1 week



ANTIGEN/ANTIBODY TESTING - SMALL MAMMALS



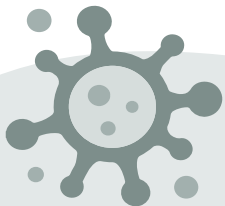
All tests include full reporting unless otherwise stated. Sample - 1ml unless indicated.

Profiles	Includes	Code	Sample	Comments	Turnaround
Myxomavirus antibodies		SMYX	Serum	Rabbit (IFAT)	1 week
Sendai virus antibodies		SSSV	Serum	All species	1 week
Toxoplasma gondii antibodies (IgG+IgM)		TOX	Serum	Rabbit, guinea pig (ELISA)	2 days
Treponema paraluisuniculi antibodies		TRPP	Serum	Rabbit (agglutination test)	3-5 days

ANTIGEN/ANTIBODY TESTING - REPTILES

All tests include full reporting unless otherwise stated

Profiles	Includes	Code	Sample	Comments	Turnaround
Cryptosporidium antigens		CRYR	Faeces, regurgitated material, gastric lavage, stomach biopsy	IFAT	3-5 days
Herpesvirus (TeHV-1 and TeHV-3) antibodies		SHTT	Serum, heparinized plasma	Tortoise (VNT)	2 weeks
Paramyxovirus/Ferlavirus antibodies		SRPF	Serum, heparinized plasma	HAH	2 weeks
Picornavirus antibodies		SPIC	Serum, heparinized plasma	Tortoise (VNT)	2 weeks

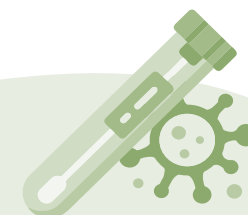


PCR - AVIANS



All tests include full reporting unless otherwise stated

Profiles	Includes	Code	Sample	Comments	Turnaround
Adenovirus		ADVP	Swab or tissue		3-5 days
Avian haemosporidia (avian malaria)		XAHP	EDTA		3-5 days
Avian sex determination		ADS	EDTA, feathers		1 week
Bornavirus		XABV	Swab	PaBV-2, PaBV-3, PaBV-4, and PaBV-7	1-3 days
Chlamydia species		PSIT	Cloacal and/or throat swab, faeces	without differentiation	1-3 days
Circovirus (PBFD virus)		XPCV	EDTA, swab, feather, faeces		3-5 days
Circovirus (pigeon)		CIRP	EDTA, swab, feather, faeces		3-5 days
Herpesviruses (Pacheco's disease)		XAHV	EDTA, swab, feather, faeces		3-5 days
Mycoplasma gallisepticum / synoviae		XMGA	Swab, tissue, faeces		3-5 days
Paramyxovirus (aPMV-1)		XPAR	Swab		2 weeks
Polyoma virus		PYV	EDTA, feather, swab		3-5 days
Pox (Avipox virus)		POX	Skin, scab, lesion		3-5 days
Psittacine Circovirus (PBFD)		PBFD	EDTA, feather	Abnormal or suspicious-looking feathers are ideal for PBFD	3-5 days
Reovirus		XREO	Swab, faeces, tissue		3-5 days
Salmonella species		XSAL	Swab, faeces, tissue, eggs		1-3 days
Tritrichomonas foetus		XATR	Swab		1-3 days
Usutu virus		XUSU	EDTA, serum, tissue		3-5 days
West Nile virus		WNVP	Swab		3-5 days

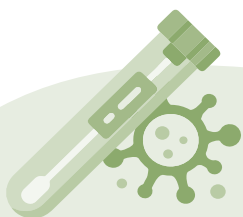


PCR - SMALL MAMMALS



All tests include full reporting unless otherwise stated

Profiles	Includes	Code	Sample	Comments	Turnaround
Adenovirus		ADVP	Swab	Guinea pig	3-5 days
Bordetella bronchiseptica		XBB	Swab	Rabbit	1-3 days
NEW! Capillaria aerophila		CAAE	Faeces, BAL		3-5 days
Chlamydia species		CHP	Swab		1-3 days
Coronavirus (enteric+systemic)		CEST	Faeces	Ferret	3-5 days
Cryptosporidia		XCRY	Faeces		1-3 days
Dermatophytes		DERP	Plucked hair from the active border of lesions, skin scab	Rabbit, guinea pig	3-5 days
Distemper		CDVP	Swab, urine, CSF, EDTA	Ferret, racoon	3-5 days
Encephalitozoon cuniculi		ECUP	Urine, CSF		3-5 days
European brown hare syndrome virus (EBHS)		XBHS	Faeces, tissue, urine, liver	Hare	3-5 days
Francisella tularensis		XFT	Swab, lymph node, tissue	Rabbit, mouse	3-5 days
Giardia		GIAP	Faeces		1-3 days
Helicobacter species		XHEL	Tissue, vomitus	Ferret, hamster, mouse	3-5 days
Influenza A virus		I AVR	Swab		3-5 days
Lawsonia intracellularis		XLAW	Faeces		3-5 days
Leptospira species		LEPP	Urine and EDTA, tissue		3-5 days
Microfilaria		MICX	EDTA	Ferret	3-5 days
NEW! Mycoplasma caviae		XMPC	Swab	Guinea pig	3-5 days
Mycoplasma pulmonis		XMP	Swab, tissue	Rat, mouse	3-5 days
NEW! Mycoplasma species		XMPR	Swab	Rabbit	3-5 days
Myxoma virus		MYXO	Swab	Rabbit	1-3 days
Orthopoxvirus		XOPV	Scab	Rabbit, guinea pig, rat, mouse	3-5 days



PCR - SMALL MAMMALS



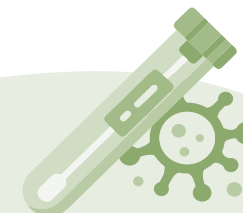
All tests include full reporting unless otherwise stated

Profiles	Includes	Code	Sample	Comments	Turnaround
Parvovirus (Aleutian mink disease)		XAMD	Swab, EDTA, faeces	Ferret	3-5 days
Pasteurella multocida (toxin producing)		XPAM	Swab	Rabbit	3-5 days
Rabbit haemorrhagic disease (RHD)		XRHD	Fresh liver (in saline, no formalin), EDTA, faeces, swab, urine	Rabbit. Including differentiation RHDV1/RHDV2	3-5 days
NEW! Rotavirus A		XROT	Faeces		3-5 days
Salmonella species		XSAL	Faeces, swab		1-3 days
Sarcoptes scabiei var. canis		XSAR	Skin scraping	Rabbit, guinea pig, ferret	3-5 days
Toxoplasma gondii		TOXP	CSF	Rabbit, guinea pig	1-3 days
Treponema paraluisicuniculi		XTRE	Scab, swab, tissue	Rabbit	3-5 days

PCR - REPTILES/AMPHIBIANS/FISH

All tests include full reporting unless otherwise stated

Profiles	Includes	Code	Sample	Comments	Turnaround
Adenovirus		ADVP	Swab, tissue	Reptiles	3-5 days
Arenavirus (inclusion body disease)		XIBD	Swab, EDTA, tissue	Boas, pythons	3-5 days
Batrachochytrium dendrobatidis		XBDB	Swab	Amphibians	1-3 days
Batrachochytrium salamandrivorans		XBS	Swab	Amphibians	1-3 days
Carp edema virus (CEV)		XCEV	Tissue	Carp	3-5 days

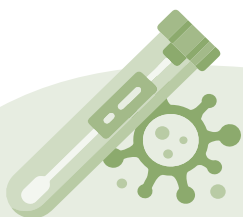


PCR - REPTILES/AMPHIBIANS/FISH



All tests include full reporting unless otherwise stated

Profiles	Includes	Code	Sample	Comments	Turnaround
Chlamydia species		CHP	Swab, nasal lavage fluid	Reptiles, amphibians	1-3 days
Cryptosporidia		XCRY	Faeces, gastric lavage fluid	Reptiles. Differentiation performed if positive for £25.00	1-3 days
NEW! Devriesea agamarum		XDAM	Swab, tissue	Lizards	3-5 days
Encephalitozoon pogonae		ENPO	Tissue, faeces	Bearded dragons	3-5 days
Entamoeba invadens		ENIN	Tissue, faeces	Snakes	3-5 days
Entamoeba spp.		ENSP	Tissue, faeces	Differentiation available. Reptile	3-5 days
Herpesvirus		HERP	Swab, tissue	Differentiation available. Reptiles, frog, toad, Koi carp	Up to 1 week
NEW! Herpesvirus (BfHV-1)		HER1	Swab, tissue	Amphibians	3-5 days
NEW! Herpesvirus (KHV)		HER2	Swab, tissue	Koi carp	3-5 days
Intranuclear Coccidians (TINC)		XINC	Swab, nasal lavage fluid, tissue	Tortoises, turtles	3-5 days
Iridovirus		XIRI	Swab, skin, liver	Lizards	3-5 days
Mycoplasma species		XMAP	Swab, nasal lavage fluid	Tortoises, turtles, snakes	3-5 days
NEW! Nannizziopsis spp.		NNZZ	Skin, swab, tissue	Lizard	3-5 days
Nidovirus (shingleback Nidovirus)		NIDO	Swab, tracheal lavage fluid	Tiliqua spp.	3-5 days
Nidoviruses		XNID	Swab, tracheal lavage fluid	Phyttons, boa	1-3 days
Ophidiomyces ophiodiicola		OPOP	Swab, skin, tissue	Snakes	3-5 days
Paramyxoviruses/Ferlaviruses		XPFV	Swab, tracheal lavage fluid, tissue	Reptiles	3-5 days
Picornavirus (virus X)		XPIC	Swab, tissue	Tortoises	3-5 days
Ranaviruses		XRAN	Swab, tissue	Reptiles, amphibians, fish	3-5 days
Reoviruses		XREO	Swab, BAL, tissue	Reptiles	3-5 days
Salmonella species		XSAL	Faeces	Reptiles, amphibians	1-3 days
Sunshinevirus		XSUN	Swab, tissue	Pythons	3-5 days



PCR - BEES



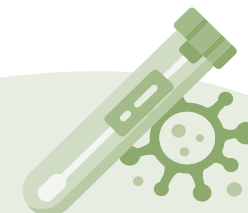
All tests include full reporting unless otherwise stated

Profiles	Includes	Code	Sample	Comments	Turnaround
Chronic bee paralysis virus		CBPV	Bees		3-5 days
Deformed wing virus (DWV)		DWVP	Bees		3-5 days
Melissococcus plutonius (EFB)		EFBP	Bees, bee larvae		3-5 days
Nosemosis (microscopical)		NMSP	30-40 dead bees	If positive, differentiation Nosema apis/ Nosema ceranae	3-5 days
Paenibacillus larvae (AFB)		PBLP	Honey in plastic bag	Honey from cells close to the brood	10 days
Sacbrood virus		SBVP	Bee larvae		3-5 days

PCR PROFILES - AVIANS

All tests include full reporting unless otherwise stated

Profiles	Includes	Code	Sample	Comments	Turnaround
Avian 1	Sex determination, Circovirus (beak and feather disease - PBFD)	XAV1	EDTA, feathers	Abnormal or suspicious-looking feathers are ideal for PBFD	1 week
Avian 2	Polyomavirus, PBFD	XAV2	EDTA, feathers	Abnormal or suspicious-looking feathers are ideal for PBFD	1 week
Avian 3	Polyomavirus, PBFD, sex determination	XAV3	EDTA, feathers	Abnormal or suspicious-looking feathers are ideal for PBFD	1 week



PCR PROFILES - AVIANS



All tests include full reporting unless otherwise stated

Profiles	Includes	Code	Sample	Comments	Turnaround
Avian 4	Polyomavirus, PBFD, sex determination, Herpesvirus	XAV4	EDTA, feather plus cloacal swab for Herpesvirus	Abnormal or suspicious-looking feathers are ideal for PBFD	1 week
Avian 5	Polyomavirus, PBFD, Herpesvirus, Chlamydia, Bornavirus	XAV5	Swab, EDTA and feathers	PBFD - Abnormal or suspicious-looking feathers. Chlamydia (Psitticosis) - cloacal and/or throat swab. Bornavirus - 4-8 plucked chest feathers	1 week
Avian 6	Polyomavirus, PBFD, Chlamydia	XAV6	Swab, EDTA and feathers	PBFD - Abnormal or suspicious-looking feathers. Chlamydia (Psitticosis) - cloacal and/or throat swab.	1 week

PCR PROFILES - SMALL MAMMALS

All tests include full reporting unless otherwise stated

Profiles	Includes	Code	Sample	Comments	Turnaround
Ferret respiratory profile	Distemper virus, Influenza A virus, SARS-CoV-2	ZRRF	Plain swab, BAL, tissue		3-5 days
UPDATED! Rat/mouse respiratory profile	Mycoplasma pulmonis, Bordetella bronchiseptica	XRRM	Swab, BAL		3-5 days
UPDATED! Rabbit respiratory profile	Bacteriology. PCR: Bordetella bronchiseptica, Pasteurella multocida, Mycoplasma sp	XRRP	Swab		3-5 days

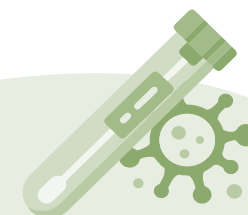


PCR PROFILES – REPTILES/AMPHIBIANS/FISH



All tests include full reporting unless otherwise stated

Profiles	Includes	Code	Sample	Comments	Turnaround
Profiles Lizard and Snake					
Boa neurological/respiratory profiles	Adenoviruses, Reptarenaviruses, Paramyxoviruses/Ferlaviruses, Reoviruses	XRNB	Swab and EDTA		3-5 days
Python neurological/respiratory profiles	Adenovirus, Reptarenaviruses, Serpentoviruses, Paramyxoviruses/Ferlaviruses, Reoviruses, Mycoplasma sp.	XRNS	Swab and EDTA		3-5 days
Lizard quarantine profile	Adenoviruses, Ranaviruses, Reoviruses	XQPL	Swab		3-5 days
Lizard skin profile	Mycology. PCR: Adenoviruses, Ranaviruses, Devriesea agamarum	XLSK	Skin, swab		3-5 days
UPDATED! Boa/python quarantine profile	Adenoviruses, Reptarenaviruses, Paramyxoviruses/Ferlaviruses, Reoviruses, Serpentoviruses	XQPS	Swab, tracheal lavage fluid, EDTA		3-5 days
Colubrid/viper quarantine profile	Adenoviruses, Ophidiomyces ophiodiicola, Paramyxoviruses/Ferlaviruses, Reoviruses	XQPV	Swab and skin/skin swab		3-5 days
Profiles Tortoise and Turtle					
Tortoise quarantine profile	Testudinis Herpesviruses (TeHV 1-3) (serology). PCR: Mycoplasma sp, Picornavirus, Ranaviruses, Herpesviruses	XQPT	Swab, nasal lavage plus heparinized plasma		1-2 weeks
NEW! Aquatic turtle quarantine profile	Herpesviruses, Mycoplasma sp, Ranaviruses	XQPA	Swab, nasal lavage plus heparinized plasma		1-2 weeks
Turtle/tortoise respiratory profile - Small	Herpesviruses, Mycoplasma sp.	XRPT	Swab, nasal lavage fluid		3-5 days
Turtle/tortoise respiratory profile - Large	Herpesviruses, Mycoplasma sp, Picornavirus	XRTL	Swab, nasal lavage fluid		3-5 days
NEW! Hibernation check small profile	Herpesviruses (TeHV 1+3), PCR: Herpesviruses, Mycoplasma sp.	XHCS	Serum, plasma, swab		1-2 weeks
NEW! Hibernation check large profile	Complete blood count, Herpesviruses (TeHV 1+3), PCR: Herpesviruses, Mycoplasma sp, endoparasites	XHCL	Serum and plasma, EDTA, swab, faeces		1-2 weeks

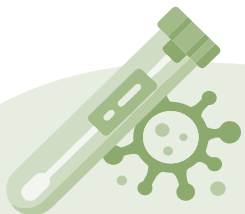


PCR PROFILES – REPTILES/AMPHIBIANS/FISH



All tests include full reporting unless otherwise stated

Profiles	Includes	Code	Sample	Comments	Turnaround
Profiles Amphibian and Fish					
NEW! Amphibian skin profile - Small	Batrachochytrium dendrobatidis, Batrachochytrium salamandrivorans	XSA1	Swab and skin		1-3 days
NEW! Amphibian skin profile - Large	Batrachochytrium dendrobatidis, Batrachochytrium salamandrivorans, BfHV-1, RaHV-3	XSA2	Swab and skin		3-5 days
NEW! Anura quarantine profile	Batrachochytrium dendrobatidis, BfHV-1, RaHV-3, Ranaviruses	XQP1	Swab and skin		3-5 days
NEW! Caudate quarantine profile	Batrachochytrium dendrobatidis, Batrachochytrium salamandrivorans, Ranaviruses	XQP2	Swab and skin		1-3 days
Koi Carp profile	Koi Herpesvirus, carp edema virus	KCPR	Tissue		3-5 days





A

Adenovirus17, 18, 19
 Adenovirus antibodies 15
 Adrenal profile ferret 8
 Arenavirus (inclusion body disease) 19
 Aspergillus antibodies 15
 Aspergillus galactomannan antigens 15
 Avian haemosporidia (avian malaria) 17
 Avian profile PCR 21
 Avian sex determination 17

B

Batrachochytrium dendrobatidis 19
 Batrachochytrium salamandrivorans 19
 Blood count avian 7
 Blood count full 7
 Blood count reptile 7
 Blood smear 7
 Bordetella bronchiseptica 18
 Bornavirus 17
 Bornavirus antibodies 15

C

Calculus (stone) analysis 9
 Capillaria aerophila 18
 Carp edema virus (CEV) 19
 Carp koi profile PCR 24
 Chlamydia antibodies 15
 Chlamydia species 17, 18, 20
 Chronic bee paralysis virus 21
 Circovirus (PBFV virus) 17
 Circovirus (pigeon) 17
 Coronavirus (enteric+systemic) 18
 Cortisol 8
 Cryptosporidia 18, 20
 Cryptosporidium antigens 16
 Culture aerobic and anaerobic 13
 Culture aerobic only 13
 Culture and sensitivity urine 9

Culture blood 13
 Culture dermatophytes 14
 Culture environmental 13
 Culture fecal pathogens 13
 Culture fungal 14
 Culture Nocardia 13
 Cytology 11
 Cytology BAL 11
 Cytology bone Marrow 11
 Cytology CSF 11
 Cytology effusion 11
 Cytology fluid 11
 Cytology prostate 11
 Cytology sinovial fluid 11
 Cytology urine 9
 Cytomegalovirus antibodies 15

D

Deformed wing virus (DWV) 21
 Dermatophytes 18
 Dermatophytes PCR 14
 Devriesea agamarum 20
 Dirofilaria antigens 15
 Distemper 18
 Distemper virus antibodies 15

E

Encephalitozoon cuniculi 18
 Encephalitozoon cuniculi antibodies (IgG) 15
 Encephalitozoon cuniculi antibodies (IgG+IgM) 15
 Encephalitozoon pogonae 20
 Entamoeba invadens 20
 Entamoeba spp 20
 European brown hare syndrome virus (EBHS) 18
 Extended blood profile avian 6
 Extended blood profile rabbit/small mammal 6
 Extended blood profile reptile 6
 Extensive urinalysis 9

F

Ferret coronavirus serology 15
 Fractional excretion 9
 Francisella tularensis 18

G

General blood profile avian 6
 General blood profile ferret 6
 General blood profile fish 6
 General blood profile hedgehog 6
 General blood profile rabbit/small mammal 6
 General blood profile reptile 6
 Giardia 18

H

Hantavirus antibodies 15
 Helicobacter species 18
 Herpesvirus 20
 Herpes virus antibodies (Pacheco's disease) 15
 Herpesvirus (BfHV-1) 20
 Herpesviruses (Pacheco's disease) 17
 Herpesvirus (KHV) 20
 Herpesvirus (TeHV-1 and TeHV-3) antibodies 16
 Hibernation profile PCR 23
 Histology 11

I

Influenza A virus 18
 Intranuclear Coccidians (TINC) 20
 Iridovirus 20

L

Lawsonia intracellularis 18
 Leptospira species 18
 Lymphocytic choriomeningitis virus antibodies 15

M

Melissococcus plutonius (EFB) 21
 Microfilaria 18
 Mycoplasma caviae 18
 Mycoplasma gallisepticum / synoviae 17
 Mycoplasma pulmonis 18
 Mycoplasma species 18, 20
 Myxoma virus 18
 Myxomavirus antibodies 16

N

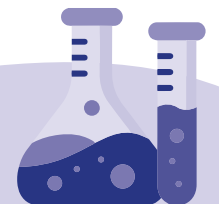
Nannizziopsis spp. 20
 Neurological/Respiratory profile boa PCR 23
 Neurological/Respiratory profile python PCR 23
 Nidoviruses 20
 Nidovirus (shingleback Nidovirus) 20
 Nosemosis (microscopical) 21

O

Ophidiomyces ophiodiicola 20
 Orthopoxvirus 18

P

Paenibacillus larvae (AFB) 21
 Paramyxovirus (aPMV-1) 17
 Paramyxovirus aPMV-1 antibodies (Newcastle disease) 15
 Paramyxoviruses/Ferlaviruses 20
 Paramyxovirus/Ferlavirus antibodies 16
 Parasitology, fecal pathogens 13
 Parvovirus (Aleutian mink disease) 19
 Pasteurella multocida (toxin producing) 19
 Picornavirus antibodies 16
 Picornavirus (virus X) 20
 Polyoma virus 17
 Pox (Avipox virus) 17
 Psittacine Circovirus (PBFV) 17





Q

Quarantine profile anura PCR.....	24
Quarantine profile boa/python PCR.....	23
Quarantine profile caudate PCR.....	24
Quarantine profile colubrid/viper PCR.....	23
Quarantine profile lizard PCR.....	23
Quarantine profile turtle PCR.....	23

R

Rabbit haemorrhagic disease (RHD).....	19
Ranaviruses.....	20
Reovirus.....	17
Reoviruses.....	20
Respiratory profile ferret PCR.....	22
Respiratory profile rabbit PCR.....	22
Respiratory profile rat/mouse PCR.....	22
Respiratory profile turtle/tortoise PCR.....	23
Rotavirus A.....	19

S

Sacbrood virus.....	21
Salivary cortisol.....	8
Salmonella species.....	17, 19, 20
Sarcoptes scabiei var. canis.....	19
Sendai virus antibodies.....	16
Skin profile.....	14
Skin profile lizard PCR.....	23
Standard urinalysis.....	9
Sunshinevirus.....	20

T

T4.....	8
Tortoise quarantine profile.....	23
Toxoplasma gondii.....	19

Toxoplasma gondii antibodies (IgG+IgM).....	16
Treponema paraluisicuniculi.....	19
Treponema paraluisicuniculi antibodies.....	16
Tritrichomonas foetus.....	17

U

UPC.....	9
Urine cortisol:creatinine ratio.....	8, 9
Usutu virus.....	17

W

West Nile virus.....	17
West Nile Virus antibodies (IgG).....	15

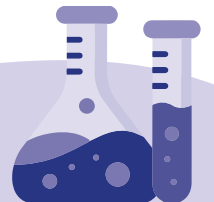




PRICE LIST DOGS AND CATS



PRICE LIST EQUINE AND FARM ANIMALS



Why **BattLab** ?

DEDICATED VETERINARY LABORATORY

Diagnostic testing for veterinarians since 2005.

EXTENSIVE RANGE OF SERVICES

Haematology, clinical chemistry, serology, endocrinology, microbiology, cytopathology, histopathology, allergy diagnostics, PCR and genetics.

QUALITY

State of the art analysers, internal and external quality control systems, results validated by a clinical pathologist with the addition of comments tailored to the clinical case.

COURIER SERVICE

Free local courier service in the Midlands.
Free UK national courier service for the mainland.

RAPID TURNAROUND TIME

Same day results for selected tests from the time of arrival at BattLab.

PROFESSIONAL ADVICE

Experienced clinical pathologists available to give advice and discuss difficult clinical cases by phone and email.

CONTINUING PROFESSIONAL EDUCATION

Providing free seminars, as well as attending and presenting at congresses in the UK and internationally.

RESEARCH/INNOVATION

Providing support and collaboration to research laboratories and Universities.

SPECIAL PRICES AND DISCOUNTS

BASED ON MONTHLY SPENDING

