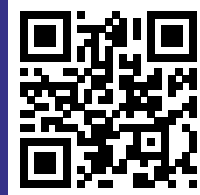
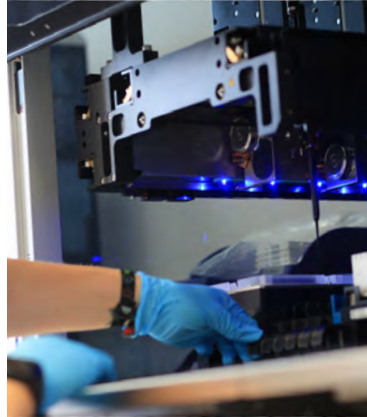
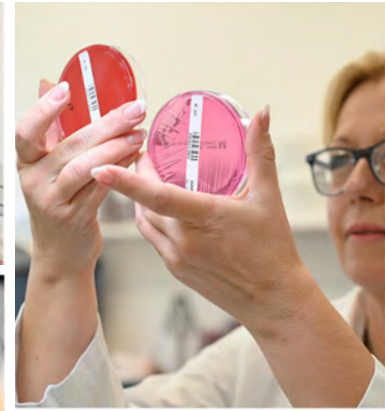


# Price List 2024







## Table of contents

General information .....	3-6
Profiles .....	7-11
Gastroenterology .....	12-15
Haematology .....	16
Coagulation .....	16
Clinical chemistry .....	17-19
Drug monitoring and toxicology tests .....	20
Urinalysis .....	21-22
Endocrinology .....	22-27
Cytology and Histology .....	28-29
Infectious diseases (serology) .....	30-35
Infectious diseases (PCR) .....	36-44
PCR profiles.....	44-48
Travel Profiles .....	49
Microbiology and Dermatology .....	50-52
Immunology .....	53
Allergy .....	54-56
Genetic testing .....	57-58
Index.....	59-63

**BattLab in Coventry (UK)**



**LABOKLIN in Bad Kissingen (Germany)**



## Get Started

**BattLab** was established in 2005 with the aim of providing veterinary surgeons with a personalised, high-quality diagnostic laboratory service to enable them to make accurate assessments of their patients' health, from disease to optimal health. We offer a wide range of services, including routine clinical pathology investigations, as well as novel gastroenterology, genetics, infectious disease, and allergy panels to ensure that we can cater to all your needs.

## How to Send Samples

You will need to download submission form from our website and send it completed along with the sample to our laboratory. If you do not see the test you want on our submission form, do not worry, it is very likely we can still offer it. Check our price list or feel free to give us a call.

There are no contracts to sign and you can use our services on demand and as often as you wish. We will always do our best to provide you with rapid, efficient and high-quality service.

## Courier Service

We offer a **free national courier service** across mainland UK (excluding the Scottish Highlands). For our local clients, we provide same-day collections and deliveries which enables us send out many results on the same day. Our national courier service offers afternoon collections with samples delivered to us by 10am the following morning.

You can now **book collections online** through our website or call us on 0247 632 3275. If you prefer, you can download our postage label for free from our website. This will save you the time to write the address on the parcel and the money to ship the sample.



## Reporting and Consultation

Reports are sent to our clients via email. We provide same-day turnaround time for many tests such as haematology, biochemistry, endocrinology, and cytology. Please note that in rare cases, turnaround times longer than a day may be affected by unforeseen delays due to the need to export samples to our main laboratory located in Germany.

Each report is accompanied by a written comment/interpretation provided by our team of experts. Our pathologists are always available for **further discussions** over the phone. The consultation and interpretation services that we provide are strictly on a professional-to-professional basis. The test protocols and interpretations are based on recommendations from current veterinary literature and our vast experience. Nevertheless, it is crucial to consider test results and advice along with physical examination and other patient information collected by the primary care veterinary surgeon who has the ultimate responsibility for making decisions regarding diagnosis and treatment.

## Laboratory Supplies

We provide a range of **free laboratory supplies** to our clients on request. These supplies include blood tubes such as EDTA, serum, sodium citrate, and oxalate fluoride, as well as swabs, universals, faecal pots, histology pots, and biohazard bags.

If you are a new customer, you can request a starter kit that contains all the necessary laboratory supplies and informative materials by sending us an email at [admin@battlab.com](mailto:admin@battlab.com).

## Terms and Conditions

Please visit the link [www.battlab.com/terms-and-conditions](http://www.battlab.com/terms-and-conditions).



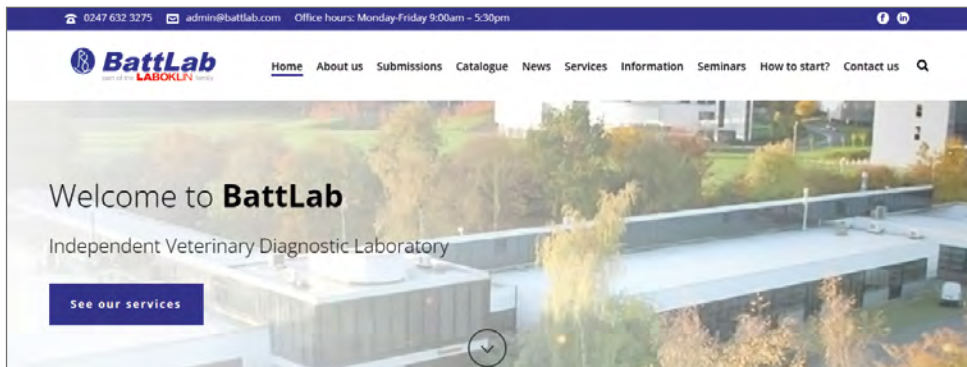
*BattLab is proud of supporting Guide Dogs,  
West Midlands Police dog unit and Vets in Community*





## Activities

At Battlab, we strongly believe that a truly progressive and dynamic laboratory should provide more than just sample testing. To keep you informed about all our latest news, announcements and information, we have various online platforms, including our website, newsletter, Facebook and LinkedIn pages. We encourage you to check them out!



You can easily access our online platforms by scanning the QR code below. Additionally, it can be used to sign up for our monthly newsletter on our website.



In addition to our online presence, we organise free seminars and webinars, give lectures at international conferences and attend veterinary congresses as exhibitors and speakers. Each of these activities has a different focus, but they all share the same aim - to engage the veterinary community in important discussions about disease management and prevention.



## Small Animal Profiles

All tests include full reporting unless otherwise stated

Profile	Includes	Code	Sample	Comments	Turnaround	
CANINE 1	FBC, Total Protein, Albumin, Globulin, Urea, Creatinine, Na, Cl, K, ALP, ALT, Total Bilirubin, Glucose	CAN1	EDTA, Serum, Ox-F and Blood smear	General Health Screen	Same day	
CANINE 2	FBC, Total Protein, Albumin, Globulin, Urea, Creatinine, Na, Cl, K, P, Ca, ALP, GGT, ALT, AST, Total Bilirubin, Bile Acids, Cholesterol, Triglycerides, DGGR Lipase, CK, Glucose	CAN2	EDTA, Serum, Ox-F and Blood smear	Extensive Health Screen	Same day	
CANINE 3	CANINE 2 plus TLI, Folate, B12 (Cobalamin)	CAN3	EDTA, Serum, Ox-F and Blood smear	Comprehensive profile for systemic, metabolic and gastrointestinal disease	Same day. Canine TLI/Folate/ Vit B12 are run Monday, Wednesday and Friday	
CANINE 4	CANINE 2 plus Total T4	CAN4	EDTA, Serum, Ox-F and Blood smear	Senior profile	Same day	
CANINE 5	CANINE 2 and URINE 2 (Sediment microscopy, biochemistry, SG, Protein:Creatinine ratio)	CAN5	EDTA, Serum, Ox-F, Blood smear and Urine	PU/PD, Urinary tract disease	Same day	
CANINE 6	CANINE 2 plus Leishmania (ELISA) plus Serum protein electrophoresis (SPE) and Urinary Protein:Creatinine ratio (UPC)	CAN6	EDTA, Serum, Ox-F, Blood smear and urine	Comprehensive profile for diagnosis/monitoring Leishmania cases	Same day. SPE and Leishmania ELISA up to 5 days.	
Canine inflammatory profile	FBC, Albumin, Globulin, CRP	INFD	EDTA, Serum	Evaluation/monitoring inflammatory status in dogs	Same day	
FELINE 1	FBC, Total Protein, Albumin, Globulin, Urea, Creatinine, Na, Cl, K, Ca, ALP, ALT, Total Bilirubin, Glucose	FEL1	EDTA, Serum, Ox-F and Blood smear	General Health Screen	Same day	
FELINE 2	FBC, Total Protein, Albumin, Globulin, Urea, Creatinine, Na, Cl, K, P, Ca, ALP, GGT, ALT, AST, Total Bilirubin, Bile Acids, Cholesterol, Triglycerides, DGGR Lipase, CK, Glucose	FEL2	EDTA, Serum, Ox-F and Blood smear	Extensive Health Screen	Same day	
FELINE 3	FBC, Total Protein, Albumin, Globulin, Urea, Creatinine, Na, Cl, K, P, Ca, ALP, GGT, ALT, AST, Total Bilirubin, Bile Acids, Cholesterol, Triglycerides, DGGR Lipase, CK, Glucose, FeLV and FIV ELISA	FEL3	EDTA, Serum, Ox-F and Blood smear	Systemic, metabolic disease, screen for FeLV/FIV	Same day	
FELINE 4	FELINE 2 plus serum protein electrophoresis (SPE) + FCoV antibodies	FEL4	EDTA, Serum, Ox-F and Blood smear	Comprehensive profile for suspected FIP cases	Same day. SPE and FCoV antibodies up to 5 days	

## Small Animal Profiles

All tests include full reporting unless otherwise stated

Profile	Includes	Code	Sample	Comments	Turnaround	
FELINE 5	FELINE 2 plus Folate, B12 (Cobalamin)	FEL5	EDTA, Serum, Ox-F and Blood smear	Comprehensive profile for systemic, metabolic and gastrointestinal disease	Same day. Folate/Vit B12 are run Monday, Wednesday and Friday.	
FELINE 6	FELINE 2 plus Total T4	FEL6	EDTA, Serum, Ox-F and Blood smear	Senior profile	Same day	
FELINE 7	FELINE 2 and URINE 2 (Sediment microscopy, biochemistry, SG, Protein:Creatinine ratio) + Magnesium	FEL7	EDTA, Serum, Ox-F, Blood smear and Urine	PU/PD, Urinary tract disease	Same day	
Feline inflammatory profile	FBC, Albumin, Globulin, SAA	INFF	EDTA, Serum	Evaluation/monitoring inflammatory status in cats	Same day, up to 5 days for SAA	
Health Screen	FBC (cell counts only), Total Protein, Albumin, Globulin, Urea, Creatinine, ALP, ALT, Total Bilirubin, Glucose	SAH	EDTA, Serum, Ox-F	Health check, preanaesthetic screen. NO interpretation and NO blood smear examination provided.	Same day	
Small Liver and Kidney Screen	Total Protein, Albumin, Globulin, Urea, Creatinine, ALP, ALT, Bile acids, Total Bilirubin	LKS	Serum	Abbreviated liver/kidney screen	Same day	
Liver profile	Total Protein, Albumin, Globulin, Urea, ALP, GGT, ALT, AST, Total Bilirubin, Bile Acids, Cholesterol, Glucose	LIVP	Serum, Ox-F	Monitoring liver function	Same day	
Kidney profile	Total Protein, Albumin, Globulin, Urea, Creatinine, Cholesterol, Na, Cl, K, P, Ca, Glucose, USG, UPC	KID	Serum, Ox-F, Urine	Monitoring kidney function	Same day	
Pre surgery profile	FBC, ALT, ALP, Total Protein, Albumin, Globulin, Urea, Creatinine, PT, aPTT	SURG	EDTA, Serum, Citrate plasma	Pre-surgery profile	Same day	
Diabetes mellitus check	Glucose, Fructosamine, K, USG, Urine, Glucose	DIAB	Serum, Ox-F, Urine	To investigate possible diabetes mellitus	Same day	
<b>NEW!</b> Pancreatitis Profile	FBC, DGGR-Lipase, PLI, Triglycerides, Cholesterol, ALT, ALP, Total bilirubin, Total Protein, Albumin, Globulin, Na, Cl, K, Ca, Glucose	PANC	EDTA, Serum, Ox-F, Blood smear	To investigate possible pancreatic disease	Same day	



## Add-on

All tests include full reporting unless otherwise stated

Profile	Code	Sample	Comments	Turnaround	
Canine T4	KT4+	Serum	Canine	Same day	
Feline T4	T4+	Serum	Feline	Same day	
TSH	TSH+	Serum	Canine/Feline	Same day	
SDMA	SDM+	Serum	Canine/Feline	up to 4 days	
Fructosamine	FRU+	Serum	Canine/Feline	Same day	
PLI	FPL+/CPL+	Serum	Canine/Feline	Same day	
C reactive protein (CRP)	CRP+	Serum	Canine	Same day	

These reduced charges apply when the tests above are added to a small animal profile.

## Small Mammal, Avian and Reptile Profiles

All tests include full reporting unless otherwise stated

Profile	Includes	Code	Sample	Comments	Turnaround	
Rabbit/Small Mammal 1 Profile	FBC, Total Protein, Albumin, Globulin, Urea, Creatinine, Na, Cl, K, ALP, ALT, Bilirubin, Glucose	RB1	EDTA, Serum, Ox-F and Blood smear		Same day	
Rabbit/Small Mammal 2 Profile	FBC, Total Protein, Albumin, Globulin, Urea, Creatinine, Na, Cl, K, P, Ca, ALP, GGT, ALT, AST, Bilirubin, Bile acids, Cholesterol, Triglycerides, CK, Glucose	RB2	EDTA, Serum, Ox-F and Blood smear		Same day	
<b>NEW!</b> Ferret Screening Profile	FBC, Total Protein, Albumin, Globulin, Urea, Creatinine, ALT, ALP, Glucose, Fructosamine, Triglycerides I	FS1	EDTA, Serum, Ox-F and Blood smear		Same day	
<b>NEW!</b> Hedgehog Profile	FBC, Total Protein, Urea, Creatinine, ALT, Baermann test (lungworm)	WH1	EDTA, Serum, Blood smear, Fresh faeces		Same day, up to 1 day for Baermann	
Avian 1 Profile	FBC, Total Protein, Albumin, Globulin, Uric acid, Na, Cl, K, GGT, AST, CK, Glucose	AV1	0.5 - 1.0 ml Heparinized whole blood and Blood smear		1 day	
Avian 2 Profile	FBC, Total Protein, Albumin, Globulin, Uric Acid, Na, Cl, K, P, Ca, GGT, AST, Bile Acids, Cholesterol, CK, Glucose	AV2	0.5 - 1.0 ml Heparinized whole blood and Blood smear		1 day	
Reptile 1 Profile	FBC, Total Protein, Uric Acid, Ca, P, GLDH, ALP	REP1	0.5 - 1.0 ml Heparinized whole blood and Blood smear		1 day (Up to to 4 days for GLDH)	
Reptile 2 Profile	FBC, Total Protein, Uric Acid, Ca, P, Na, K, GLDH, ALP, ALT, AST, Bile Acids, CK, Triglycerides, Cholesterol, Urea	REP2	0.5 - 1.0 ml Heparinized whole blood and Blood smear		1 day (Up to to 4 days for GLDH)	

## Equine Profiles

All tests include full reporting unless otherwise stated

Profile	Includes	Code	Sample	Comments	Turnaround	
Health Screen	FBC, Total Protein, Albumin, Globulin, Fibrinogen, Urea, Creatinine, Na, Cl, K, ALP, GGT, AST, CK, Glucose, Triglycerides	EQ1	EDTA, Serum, Citrate, Ox-F and Blood smear		Same day (up to 4 days for fibrinogen)	
Large Screening Profile	FBC, Total Protein, Albumin, Globulin, Fibrinogen, Urea, Creatinine, Na, Cl, K, Ca, ALP, GGT, AST, GLDH, Bilirubin, Bile acids, CK, Glucose, Triglycerides, Fe, P, Cu, Zn, Se	EQ2	EDTA, Serum, Citrate, Ox-F and Blood smear	Including trace minerals	Same day (up to 4 days for fibrinogen and trace minerals)	
<b>UPDATED!</b> Senior profile	FBC, GGT, GLDH, Lipase (DGGR), Bilirubin, Triglycerides, Glucose, Total Protein, Albumin, Globulin, Urea, Creatinine, PO4, Ca, Zn, Se, SDMA	EQ3	EDTA, Serum, Ox-F	(now includes haematology)	3 - 5 days	
<b>UPDATED!</b> Performance profile	FBC, AST, ALP, GGT, GLDH, LDH, CK, Total Protein, Albumin, Globulin, Bilirubin, Cholesterol, Triglycerides, Glucose, Lactate, Urea, Creatinine, PO4, Ca, Mg, K, Na, Fe	EQ4	EDTA, Serum, Ox-F	(now includes haematology)	3 - 5 days	
<b>UPDATED!</b> Foal profile	FBC, Triglycerides, Urea, Creatinine, Total Protein, GGT, Na, Ca, MG, PO4 + Serum Protein Electrophoresis (SPE)	FOAL	EDTA, Serum, Ox-F	(now includes haematology)	3 - 5 days	
Mineral profile	Mn, Zn, Se, Cu, Na, K, Ca, Mg, P, Cl, Fe	MINE	Serum or Heparin plasma		3 - 5 days	
Equine PPID Profile	Insulin, Glucose, Endogenous ACTH	PPID	Serum + Separated chilled EDTA plasma + Ox-F	<ul style="list-style-type: none"> <li>Serum and EDTA plasma have to be transferred into plain tubes and then kept chilled.</li> <li>Contact the laboratory for collection with a freezer pack as those samples must arrive chilled.</li> <li>Insulin samples may be basal (&gt;4h since any hard feed) or following oral carbohydrate challenge (60-90 mins after 0.45mls/kg Karo light syrup or 2h after 1g/kg dextrose powder).</li> </ul>	1 - 3 days	
Equine Metabolic Syndrome (EMS) Profile	Insulin, Glucose, Triglycerides, Adiponectin	EMS	Serum, Ox-F	Insulin sample may be basal (>4h since any hard feed) or following oral carbohydrate challenge (60-90 mins after 0.45mls/kg Karo light syrup or 2h after 1g/kg sdextrose powder).	1 - 3 days	

## Farm Animal Profiles

All tests include full reporting unless otherwise stated

Profile	Includes	Code	Sample	Comments	Turnaround	
Large Screening Profile	FBC plus ALP, GGT, Bilirubin, Cholesterol, Glucose, AST, LDH, GLDH, CK, Total Protein, Albumin, Globulin, Urea, Creatinine, Ca, Mg, K, Na, Fe, P, Cu, Zn, Se, Triglycerides	BO1	EDTA, Serum, Ox-F and Blood smear	Including trace minerals	Same day for FBC and most biochemistry parameters. Up to 4 days for GLDH and trace minerals	
Ruminant Performance Profile	FBC plus Total Protein, Urea, Cholesterol, GLDH, NEFA, CK, GGT, AST, Bilirubin, Ca, Phos, Mg, Cl, $\beta$ -HBA, Se	RU1	EDTA, Serum, Ox-F and Blood smear		Same day for FBC. Up to 4 days for other parameters	
Downer cow Profile	Ca, P, Mg, AST, CK, Urea, Total Protein	BO2	Serum		Same day	
Ketosis Profile	GLDH, GGT, Bilirubin, Total Protein, $\beta$ -HBS, NEFA, Cholesterol, Urea	BO3	Serum		3 - 5 days	
Muscular Screening	CK, $\alpha$ HBDH, AST, LDH, Na, K, Ca, PO <sub>4</sub> , Mg, Fe	MUSC	Serum		3 - 5 days	
Heavy Metal Toxicity Screening	Arsenic, Lead, Cadmium, Chrome, Copper, Manganese, Mercury, Thallium, Zinc	HMT1	EDTA, Serum, Heparin blood		~10 days	
Fertility Profile	AST, Ca, Na, PO <sub>4</sub> , Mg, $\beta$ -HBA, NEFA	FERT	Serum		3 - 5 days	
<b>NEW!</b> Weak Calf Profile	Total Protein, Calcium, PO <sub>4</sub> , ZN, Fe	WCP	Serum		3 - 5 days	
Mineral Profile 1	Ca, Na, P, Mg, Se, Zn, Cu	RUM1	Serum		3 - 5 days	
Mineral Profile 2	Ca, Na, P, Mg, Se, Zn, Cu, Mn, K, Cl, Fe	RUM2	Serum		3 - 5 days	
Porcine Profile	FBC plus GGT, GLDH, Bilirubin, ALT, AST, Total Protein, CK, Urea, Creatinine, Ca, P, Na, Mg, K, Se, Zn, Cu	POR1	EDTA, Serum, Ox-F and Blood smear	Including trace minerals	Same day for FBC and most biochemistry parameters. Up to 5 days for GLDH and trace minerals	
Llama/Alpaca Profile	FBC plus ALP, GGT, GLDH, Bilirubin, Cholesterol, Triglycerides. Glucose, AST, CK, Total Protein, Albumin, Globulin, Urea, Creatinine, Ca, P, Na, Mg, K, Fe, Se, Zn, Cu	CAM1	EDTA, Serum, Ox-F and Blood smear	Including trace minerals	Same day for FBC and most biochemistry parameters. Up to 5 days for GLDH and trace minerals	

**All reports (except health screen SAH) include a written interpretation/comment by a veterinary clinical pathologist.**

Spun gel/serum separation should ideally be performed within 30 minutes of collection. Unseparated serum will result in inaccurate results. If Fluoride/Oxalate tubes are used for glucose measurement, please ensure they are filled to the proper level.



## Gastroenterology - Canine/Feline

All tests include full reporting unless otherwise stated

Test	Includes	Code	Sample	Comments	Turnaround	
Gastro 1	FBC, TP, Albumin, Globulin, Urea, Creatinine, Na, Cl, K, P, Ca, ALP, GGT, ALT, AST, Bilirubin, Bile acids, Cholesterol, Triglycerides, DGGR Lipase, CK, Glucose, TLI, Folate, Cobalamin (Vit B12)	GE1	EDTA, Serum, Ox-F and Blood smear	Canine only	Same day. TLI/Folate/Vit B12 are run Monday, Wednesday and Friday	
Gastro 2	Canine TLI, Folate, Cobalamin (Vit B12)	GE2	Serum	Canine only	Run Mon/Wed/Fri	
Gastro 3	Canine TLI	GE3	Serum	Canine only	Run Mon/Wed/Fri	
Gastro 4	Folate, Cobalamin (Vit B12)	GE4	Serum	Canine only	Run Mon/Wed/Fri	
Gastro 5	FBC, TP, Albumin, Globulin, Urea, Creatinine, Na, Cl, K, P, Ca, ALP, GGT, ALT, AST, Bilirubin, Bile acids, Cholesterol, Triglycerides, DGGR Lipase, CK, Glucose, Folate, Cobalamin (Vit B12)	GE5	EDTA, Serum, Ox-F and Blood smear	Feline only	Same day. Folate/Vit B12 are run Monday, Wednesday and Friday	
Gastro 6	Feline TLI, Folate, Cobalamin (Vit B12)	GE6	Serum	Feline only	Folate and Cobalamin run Mon/Wed/Fri. Feline TLI run once a week	
Gastro 7	Feline TLI	GE7	Serum	Feline only	Performed weekly	
Gastro 8	Folate, Cobalamin (Vit B12)	GE8	Serum	Feline only	Run Mon/Wed/Fri	
Gastro 9*	Faecal Parasites and Bacterial pathogens	GE9	Fresh Faeces	All species	1 - 4 days	
Gastro 10*	Faecal Bacterial pathogens (e.g. E. coli, Campylobacter, Salmonella)	GE10	Fresh Faeces	All species	1 - 4 days	
Gastro 11	Faecal Pathogenic E. coli (EPEC, VTEC)	GE11	Fresh Faeces	Canine/Feline	7 - 10 days	
Gastro 12	Faecal Pathogenic E. coli (EPEC, VTEC, ETEC)	GE12	Fresh Faeces	Canine/Feline	7 - 10 days	
Gastro 13	Autologous E. coli Vaccine	GE13	Fresh Faeces	Long-term management of pathogenic E. coli. Written prescription is required to proceed with the request.	Performed weekly	
Gastro 18*	Faecal Parasites, Bacterial pathogen culture and Giardia antigen test	GE18	Fresh Faeces	Canine/Feline	Same day for Giardia, 2-4 days for other results	
PLI	Pancreatic Specific Lipase	CPLI/ FPLI	Serum	Canine/Feline	Same day	
Vitamin B12 (Cobalamin)	B12	B12	Serum	Canine/Feline	Run Mon/Wed/Fri	

\* Sensitivity testing will be performed in very selected cases and when appropriate (always when Salmonella is cultured and/or when Campylobacter growth is persistent)

## Gastroenterology - Canine/Feline

All tests include full reporting unless otherwise stated

Test	Includes	Code	Sample	Comments	Turnaround	
Folate / Folic acid	FOL	FOL	Serum	Canine/Feline	Run Mon/ Wed/Fri	
Juvenile Diarrhoea Profile*	Faecal Parasites, Bacterial pathogen culture (E. coli, Campylobacter, Salmonella) and Parvovirus antigen	GE16	Fresh faeces	Canine/Feline	Same day for Parvovirus, 1-3 days for other results	
Occult blood test		OCC	Fresh faeces	The patient must be fed a diet free from red meat, blood, liver, kidneys, fish with dark meat, tomatoes, cauliflower, horseradish, turnips, melon, banana, and soy beans for 4 days prior to sampling in order to avoid false positive results. Iron tablets should also be avoided prior to testing.	1 - 2 days	
Endoparasites	Faecal parasites	ENDO	Fresh faeces	All species	Same - 1 day	
Baermann Lungworm Detection	Lungworm larvae	LUNG	3 day pooled faeces		1 day	
Endoparasites and Giardia antigens	Faecal parasites plus Giardia antigen test	GE17	Fresh faeces		Same - 1 day	
Cryptosporidium antigens		CRYE	Fresh faeces	EIA. PCR also available in the dedicated section.	3 - 5 days	
Giardia antigens		GIA	Fresh faeces or 3 day pooled faeces	ICG. PCR also available in the dedicated section.	Same day	
Parvovirus antigens		PARV	Fresh faeces	Canine/Feline ICG. PCR and serology also available in the dedicated sections	Same day	
Clostridium difficile Toxin A and B		CDAB	Fresh faeces	ELISA	2 - 4 days	
Clostridium perfringens Enterotoxin		CLP	Fresh faeces	ELISA	2 - 4 days	
<b>NEW!</b> Yersinia and Campylobacter		YECA	Fresh faeces	MALDI-TOF	2 - 4 days	
Rotavirus antigens		ROTA	Fresh faeces	EIA	2 - 4 days	
Pancreas elastase		ELAS	Fresh faeces	Canine only	3 - 5 days	

\* Sensitivity testing will be performed in very selected cases and when appropriate (always when Salmonella is cultured and/or when Campylobacter growth is persistent)

## Gastroenterology - Canine/Feline

All tests include full reporting unless otherwise stated

Test	Includes	Code	Sample	Comments	Turnaround	
<b>NEW!</b> Microscopical Nutritive Digestion		MNDI	Fresh faeces		2 - 4 days	
α-1-Antitrypsin		ANTI	Fresh faeces		7 - 10 days	
Calprotectin		CALP	Fresh faeces	Canine/Feline	2 - 4 days	
<b>NEW!</b> Secretory IgA		SEIG	Fresh faeces		3 - 5 days	
<b>NEW!</b> Bile acids (cholegenic diarrhoea)		BADI	Fresh faeces		7 - 10 days	
Dysbiosis Analysis	key bacteria microbiome quantitative (PCR)	DYSA	Fresh faeces		~1 week	
<b>UPDATED!</b> Dysbiosis Profile (dog)	key bacteria microbiome quantitative (PCR), mycology, calprotectin, alpha 1 antitrypsin, slgA, pancreatic elastase, endoparasites	DYSD	Fresh faeces		~1 week	
<b>UPDATED!</b> Dysbiosis Profile (cat)	key bacteria microbiome quantitative (PCR), mycology, calprotectin, alpha 1 antitrypsin, slgA, microscopic nutritive digestion, endoparasites	DYSC	Fresh faeces		~1 week	
Faecal egg count (modified McMaster)	egg count per gram of faeces	FEC	Fresh faeces		2 - 4 days	
Coronavirus PCR		CORP (dog), FIPP (cat)	Fresh Faeces		3 - 5 days	
Cryptosporidia PCR		XCRY	Fresh Faeces		2 - 4 days	
Giardia species PCR		GIAP	Fresh faeces or 3 day pooled faeces		3 - 5 days	
Parvovirus (CPV/FPV) PCR		PARP	Fresh faeces		3 - 5 days	
Salmonella species PCR		XSAL	Fresh faeces		3 - 5 days	
Tritrichomonas PCR		TRIC	3 day pooled faeces (keep at room temperature)		3 - 5 days	

Other PCRs also available (see dedicated PCR section)



## Gastroenterology - Equine

All tests include full reporting unless otherwise stated

Test	Includes	Code	Sample	Comments	Turnaround	
Baermann Lungworm Detection	Lungworm larvae	LUNG	Fresh faeces		1 day	
Endoparasites	Faecal parasites	ENDO	Fresh faeces		Same - 1 day	
Faecal egg count (modified McMaster)	egg count per gram of faeces	FEC	Fresh faeces		2 - 4 days	
Large Faecal Profile	Bacterial pathogens including Salmonella, Mycology, gas producers, Clostridium perfringens enterotoxin, Clostridium difficile toxin A and B, Endoparasites, Coronavirus	FEP	Fresh faeces		3 - 5 days	
Small Faecal Profile	Bacterial pathogens including Salmonella, Mycology, Endoparasites	GE10	Fresh faeces		2 - 4 days	
Foal Faecal Profile	Bacterial pathogens including Salmonella, Mycology, gas producers, Clostridium perfringens enterotoxin, Endoparasites, Rotavirus	FFFP	Fresh faeces		2 - 4 days	
Dysbiosis Analysis	Key bacteria microbiome quantitative (PCR)	DYSH	Fresh faeces		~ 1 week	
Equine endoparasite profile	Endoparasites, Faecal egg count (modified McMaster), SAFC (sodium acetate-acetic acid-formalin concentration, special sedimentation technique)	EEPP	Fresh faeces		3 - 5 days	

For more tests (e.g. endoparasites, bacterial pathogens), please refer to dog/cat and PCR sections

## Gastroenterology - Farm Animal

All tests include full reporting unless otherwise stated

Test	Includes	Code	Sample	Turnaround	
Faecal Bacterial Pathogens	e.g. E. coli, Campylobacter, Salmonella	GE10	Fresh faeces	1 - 4 days	
Bovine Faecal Profile	Endoparasites, Bacteriology incl. Salmonella, Mycology, Mycobacteria avium ssp. paratuberculosis (PCR)	FBP	Fresh faeces	Up to 1 week	
Calf Faecal Profile - Small	Rotavirus, Coronavirus, Cryptosporidium, K99 (E. coli fimbrial antigen)	FCP	Fresh faeces	Up to 1 week	
Calf Faecal Profile - Large	Bacteriology incl. Salmonella, Mycology, Endoparasites inc. Cryptosporidium, Rotavirus, Coronavirus	FCPL	Fresh faeces	Up to 1 week	
Piglet Faecal Profile	Bacteriology incl. Salmonella, Mycology, Endoparasites, Rotavirus, Coronavirus, Clostridium perfringens enterotoxin	PFP	Fresh faeces	Up to 1 week	
Porcine Faecal Profile	Bacteriology incl. Salmonella, Mycology, Lawsonia intracellularis (PCR)	FPOR	Fresh faeces	Up to 1 week	

For more tests (e.g. endoparasites, bacterial pathogens), please refer to dog/cat and PCR sections

## Haematology

All tests include full reporting unless otherwise stated

Profile	Includes	Code	Sample	Comments	Turnaround	
Complete Blood Count	White blood cell count, red blood cell count, platelet count, haemoglobin, HCT, MCV, MCHC, MCH, RDW, leukocyte differential count, morphology assessment and reticulocyte count (when appropriate and/or requested)	FBC1	EDTA and Blood smear		Same day	
Avian Blood Count	PCV, haemoglobin, leukocyte estimate and differential count, platelet comment. Morphology assessment	FBC2	EDTA or Heparin and Blood smear		Up to 1 day	
Reptile Blood Count	PCV, haemoglobin, leukocyte estimate and differential count, platelet comment. Morphology assessment	FBC3	EDTA or Heparin and Blood smear		Up to 1 day	
Blood Smear Examination		FILM	Blood smear	Blood smears submitted without whole blood are examined by highly trained haematology technicians. If a CBC was performed on an in-clinic analyzer, please send results from the analyser along with the blood smears to facilitate interpretation by the pathologist.	Same day	
Canine Coombs Test		COO1	EDTA	To confirm IMHA	Same day	
Equine Coombs Test		COO1	EDTA	To confirm IMHA	2 - 4 days	
Feline Coombs Test		COO1	EDTA	To confirm IMHA. Testing performed at 37°C and 4°C	2 - 4 days	
Canine Blood Typing		CBG	EDTA		Same day	
Feline Blood Typing		FBG	EDTA		Same day	
Serum iron and Total Iron Binding Capacity (TIBC)		SIDE	Serum	To confirm iron deficiency state	1 week	
Erythropoietin (EPO)		EPO	Serum	To investigate erythrocytosis	2 weeks	

## Coagulation

All tests include full reporting unless otherwise stated

Profile	Includes	Code	Sample	Comments	Turnaround	
Coagulation Screen	Complete blood count, aPTT and PT	CP1	EDTA, Citrate plasma and Blood smear	Sample collection and handling as below for citrate sample	Same day	
Activated Partial Thromboplastin Time (aPTT) and Prothrombin Time (PT)		APT2	Citrate plasma	<ul style="list-style-type: none"> <li>Fill blood to the line of a citrate tube</li> <li>Gently invert several times to mix thoroughly</li> <li>Centrifuge immediately</li> <li>Transfer plasma into a plain tube and label "Citrate plasma"</li> <li>Freeze or keep chilled</li> </ul>	Same day	

Activated Partial Thromboplastin Time (aPTT)		APTT	Citrate plasma	Sample collection and handling as above	Same day	
Prothrombin Time (PT)		PT	Citrate plasma	Sample collection and handling as above	Same day	
D-dimers		DDIM	Citrate plasma	Sample collection and handling as above	2 - 3 days	
DIC profile	Complete blood count, PT, aPTT, D-dimers, fibrinogen	DIC	EDTA, citrate plasma and Blood smear	Sample collection and handling for citrate sample as above	Same day for FBC, PT and aPTT, 2-3 days for D-dimers and fibrinogen	
Fibrinogen		FIB	Citrate plasma	Sample collection and handling as above	2 - 4 days	
Coagulation factors			Frozen citrated plasma	Please contact the laboratory!		
von Willebrand Antigen		VONW	Citrate plasma	Sample collection and handling as above	Up to 2 week	
von Willebrand Disease Type I DNA Test		VW1	EDTA or Buccal swabs	Barbet (French Water Dog), Bernese Mountain Dog, Cavapoo, Cockapoo (English), Cockapoo (American), Coton de Tulear, Doberman, Drentsche Patrijshond, German Pinscher, Golden-doodle, Irish Red and White Setter, Irish Setter (Red Setter), Kerry Blue Terrier, Kromfohrlander, Labradoodle, Manchester Terrier, Miniature Poodle, Papillon (Continental Toy Spaniel), Pembroke Welsh Corgi, Poodle, Stabyhound (Stabijhoun), Standard Poodle, Toy Poodle	2 - 3 weeks	
von Willebrand Disease Type II DNA Test		VW2	EDTA or Buccal Swabs	German Wirehaired Pointer, German Shorthair Pointer	2 - 3 weeks	
von Willebrand Disease Type III DNA Test		VW3	EDTA or Buccal Swabs	Scottish Terrier, Shetland Sheepdog, Dutch Kooiker (Kooikerhondje)	2 - 3 weeks	

## Clinical Chemistry

All tests include full reporting unless otherwise stated

Test	Code	Sample	Comments	Turnaround	
Single biochemistry test: Total Protein, Albumin, Globulin, Urea, Creatinine, Na, Cl, K, P, Ca, ALP, GGT, ALT, AST, Total Bilirubin, Cholesterol, Triglycerides, Amylase, DGGR Lipase, CK, Glucose, etc.		Serum, Ox-F for glucose		Same day	
Biochemistry tests added to profile (same as above)		Serum, Ox-F for glucose		Same day	
Alpha 1 glycoprotein (AGP)	AGP	Serum		2 - 4 days	



## Clinical Chemistry

All tests include full reporting unless otherwise stated

<b>NEW!</b> Alpha fetoprotein (AFP)	AFP	Serum		1 week	
Beta hydroxybutyrate	BHB	Serum		2 - 4 days	
Bile acids	BA	Serum		Same day	
Bile acids stimulation test	BA1	Serum	Pre: Collect after a 12 hour fast Post: Collect 2 hours after feeding a small meal (~2-3 tablespoons)	Same day	
Brain Natriuretic Peptide (Nt-proBNP)	BNP	EDTA plasma	EDTA plasma should be fresh (<24h) and separated	1 week	
Cadmium	CADM	Serum		1 week	
Canine prostate specific esterase (CPSE)	CPSE	Serum	Canine only	2 - 4 days	
Cobalt	COB	Serum		1 week	
Cholesterol (HDL)	CHOL	Serum		2 - 4 days	
Cholesterol (LDL)	COHL	Serum		2 - 4 days	
Cholinesterase	CHOL	Serum		2 - 4 days	
Copper	COPR	Serum		2 - 4 days	
C reactive protein (CRP)	CRP	Serum	Canine only	Same day	
Cystatin C	CYSC	Serum		2 - 4 days	
<b>NEW!</b> FGF23	XFGF	Serum		~1 week	
Folate / Folic acid	FOL	Serum		Run Mon/Wed/Fri	
Free fatty acids (NEFA)	NEFA	Serum		2 - 4 days	
Fructosamine	FRU	Serum		Same day	
Glutathione peroxidase	GLPX	Whole EDTA or Heparin		2 - 4 days	
GLDH	GLDH	Serum		2 - 4 days	
Haptoglobin	HAP	Serum		2 - 4 days	
Alpha-hydroxybutyrate dehydrogenase ( $\alpha$ HBDH)	HBDH	Serum		2 - 4 days	
Indoxyl sulphate	INDO	Serum		1 week	
Ionised calcium	CA+	Serum	<ul style="list-style-type: none"> <li>Collect into a plain serum tube (no gel) ensuring the tube is completely filled without any air bubbles</li> <li>Allow blood to clot (~15-20 min), centrifuge and transfer serum into a plain airtight tube, completely filling it (NO air)</li> </ul>	2 days	

Iron	IRON	Serum		2 - 4 days	
LDH	LDH	Serum		2 - 4 days	
Lead	LEAD	Whole EDTA or Heparin		1 week	
Magnesium	MAG	Serum		Same day	
Manganese	MANG	Serum		2 - 4 days	
<b>NEW!</b> Nu.Q®	NUQ	EDTA plasma	Sample has to be fasted (>4h) and arrive to the lab cooled.	~ 1 week	
Pancreatic Specific Lipase	CPLI/ FPLI	Serum	Canine/Feline	Same day	
Selenium	SEL	Serum		2 - 4 days	
SDMA	SDMA	Serum		2 - 4 days	
Serum Amyloid A (SAA)	SAA	Serum		2 - 4 days	
Serum electrolytes 1	ELE1	Serum	Sodium, Potassium, Chloride, Na/K ratio	Same day	
Serum electrolytes 2	ELEC	Serum	Sodium, Potassium, Chloride, Na/K ratio, Calcium, Phosphorus	Same day	
Taurine	TAU	1 ml separated frozen heparin plasma	Cannot run on haemolysed samples	up to 2 weeks	
Thallium	TALL	Urine		1 week	
Thymidine kinase	THMK	Frozen Serum		up to 2 weeks	
TLI (canine)	GE3	Serum	Canine only	Run Mon/Wed/Fri	
TLI (feline)	GE7	Serum	Feline only	Run weekly	
Troponin I	TROP	Frozen serum	No gel tubes	2 - 4 days	
Uric acid	UA	Serum		Same day	
Vitamin A	VITA	Serum		1 week	
Vitamin B12 (Cobalamin)	B12	Serum		Run Mon/Wed/Fri	
Vitamin D3 (25 OH)	VITD	Frozen serum	Serum taken after overnight fast, should be frozen and not be exposed to sunlight	1 - 2 weeks	
Vitamin E	VITE	Serum		1 week	
Other vitamins		Serum	Contact the laboratory		
Zinc	ZN	Serum	Zinc free serum tubes	2 - 4 days	

## Therapeutic Drug Monitoring and Toxicology Tests

All tests include full reporting unless otherwise stated

Test	Code	Sample	Comments	Turnaround	
Phenobarbital	PHE	At least 0.5 ml serum	No gel tubes. To be checked after a minimum of 2-3 weeks of treatment or dose changing. Peak: 4-8 hours post-pill Trough: Immediately prior to next dose (usually 12h) First monitoring requires peak and trough sampling. Further monitoring requires one sample only, collected any time of the day.	Same day	
Phenobarbital Peak and Trough samples	PHE1	At least 0.5 ml serum		Same day	
Bromide	KBR	At least 0.5 ml serum	No gel tubes. To be checked after a minimum of 120 days of treatment, unless loading dose given. Peak: There is no peak collection time due to the long half-life of bromide Trough: Immediately prior to next dose	2 days	
Cyclosporin	CYCL	1ml EDTA	No gel tubes. Peak: 2-4 hours post-pill. Trough: 12 hours following the last dose	3 - 4 days	
<b>NEW!</b> α-Chloralose	CHLO	Serum, Urine		4 - 5 days	
<b>NEW!</b> Colchicine	COLC	1 ml Urine		4 - 5 days	
Cortisol	COR	Serum	No gel tubes. See endocrinology - adrenal section for tests to monitor hyperadrenocorticism	Same day	
Digoxin	DIG	At least 0.5 ml serum	No Gel tubes. After a minimum of 3-5 days of treatment 6-8 hours post-pill	2 days	
Levetiracetam (Keppra)	KEP	At least 1 ml serum	No Gel tubes. Collect at trough directly before next dose	3 - 4 days	
<b>NEW!</b> Amiodarone	AMIO	Serum		~1 week	
<b>NEW!</b> Zonisamide	ZONI	Serum		~1 week	
Extensive toxicology screen	TOX1	Heparin blood, Urine, Fresh tissue, Contaminated material, Stomach content	Screening for 30,000 drugs and toxins including antiarrhythmics, analgesics, anticonvulsants, antidepressants, antihistamines, barbiturates, benzodiazepines, toxins, NSAIDs, phenothiazines, caffeine, chocolate, ketamine.	~1 week	
Heavy metal toxicity screen	HMTS	Serum+EDTA+Urine, Fresh tissue, Feed sample		~1 week	
Ethylene glycol	TOX3	Heparin blood, Urine, Fresh tissue, Contaminated material, Stomach content		~1 week	
Vitamin K1 / K1 epoxide	TOX4	Heparin blood		~1 week	
Anti-coagulant panel	TOX2	Heparin blood, Urine, Fresh tissue, contaminated material, Stomach content	Screening for Warfarin and coumarin derivatives	~1 week	
Convulsant panel	TOX5	Stomach content, Feed sample	Screening for strychnine, tremorgenic mycotoxins, bromethalin	~1 week	
Mycotoxin panel	TOX6	Stomach content, Feed sample	Screening for aflatoxins, zearalenone, vomitoxin	~1 week	
Methylxanthines	TOX7	Heparin blood, Urine, Fresh tissue, contaminated material, Stomach content.	Screening for Caffeine, Theobromine, Dimethylxanthine	~1 week	
Drugs of abuse	TOX8	At least 10 ml urine	Screening for Codeine, Amphetamine, Cocaine, Heroin, Methadone, Cannabis, MDMA, Morphine, Buprenorphine.	~1 week	



<b>NEW!</b> Metaldehyde, Strychnine, Methiocarb	TOX9	Heparin blood, Urine, Fresh tissue, Contaminated material, Stomach content		~1 week	
<b>NEW!</b> Xylitol	TOX10	Ox-F, Urine		~1 week	
Cadmium	CADM	Serum		~1 week	
Cobalt	COB	Serum		~1 week	
Lead	LEAD	Whole EDTA or Heparin		~1 week	
Thallium	TALL	Urine		~1 week	
Doping profile	DOPP		Please contact the laboratory!		
Antiphlogistics profile	ANTP		Please contact the laboratory!		
Sedative profile	SEDP		Please contact the laboratory!		

## Urinalysis

All tests include full reporting unless otherwise stated

Test	Includes	Code	Sample	Comments	Turnaround	
Standard Urinalysis	Sediment examination (unstained preparation examined by an experienced technician), specific gravity, protein, glucose, ketones, pH (meter), heme, bilirubin	UR1	5 ml Urine, plain		Same day	
Standard Urinalysis with urine Protein:Creatinine Ratio	UR1 plus urine protein:creatinine ratio	UR2	5 ml Urine, plain		Same day	
Standard Urinalysis with Aerobic Bacterial Culture and Sensitivity	UR1 plus aerobic bacterial culture and antibiotic sensitivities	UR3	5 ml Urine, Plain and Boric acid	Fill tube to the black arrow mark to avoid too high of a boric acid concentration	Same day, 1 - 5 days for culture	
Comprehensive Urinalysis	UR1 plus urine protein:creatinine ratio, aerobic bacterial culture and antibiotic sensitivities	UR4	5 ml Urine, Plain and Boric acid	Fill tube to the black arrow mark to avoid too high of a boric acid concentration	Same day, 1 - 5 days for culture	
Urine Culture and Sensitivity	Aerobic bacterial culture and antibiotic sensitivities	CUL1	5 ml Urine, Boric acid	Fill tube to the black arrow mark to avoid too high of a boric acid concentration	1 - 5 days	
Urine Protein:Creatinine Ratio (UPC)		UPCR	Minimum of 1 ml Urine in plain tube		Same day	
Microalbumin		MIAB	Minimum of 1 ml Urine in plain tube		3 - 5 days	
Urine Cortisol:Creatinine Ratio		UCCR	5 ml Urine, plain		3 - 4 days	

## Urinalysis

All tests include full reporting unless otherwise stated

Test	Includes	Code	Sample	Comments	Turnaround	
Urine Cytology	Cytological examination of urine or prostatic washes. Performed by a clinical pathologist on stained smears obtained by sediment preparation or cytocentrifugation. Recommended if suspicion for neoplasia	CYTU	5 ml Urine, plain and EDTA tubes, Air-dried urine sediment slides		Same day	
Urine Cytology (when added to a UR profile)	as above	CYU+	as above		Same day	
Urine Protein Electrophoresis		UPE	Minimum of 1 ml urine in plain tube	Bence Jones protein confirmatory test available upon request (+£109 - 1 week turnaround time)	3 - 4 days	
SDMA	Symmetric dimethylarginine	SDMA	Serum		2 - 4 days	
Cystatin C		CYST	Serum		2 - 4 days	
<b>NEW!</b> Indoxyl sulphate		INDO	Serum		~1 week	
<b>NEW!</b> FGF23	Fibroblast growth factor 23	XFGF	Serum		~1 week	
Fractional excretion	Can be performed for Sodium, Chloride, Potassium, Calcium or Phosphorus	FRAC	Serum AND Urine		2 - 4 days	
Calculus Analysis		CALC	Dry Calculus		1 - 2 days	
BRAF mutation	For confirmation of canine transitional cell carcinoma (TCC)	BRAF	Prestained smears, Air dried smears, Fluid, Tissue in formalin, Urine sediment	Please be aware the mutation is found in a large percentage (but not all) canine TCCs	up to 1 week	

## Endocrinology - Thyroid

All tests include full reporting unless otherwise stated

Test	Code	Sample	Comment	Turnaround	
Total T4	K9T4/T4	Serum	No gel tubes	Same day	
Total T4 + Urea + Creatinine	T4UC	Serum	No gel tubes	Same day	
Total T4 + TSH	T4SH	Serum	No gel tubes. For diagnosing and monitoring canine hypothyroidism. For monitoring purposes: 1) Soloxine, Leventa, Thyroxyl: collect sample 4-6 hours post pill 2) Thyforon: collect peak sample 3 hours post pill	Same day	
TSH	CTSH/TSH	Serum	No gel tubes	Same day	
Free T4 by equilibrium dialysis (fT4)	FT4D	Serum	No gel tubes	3 days	
T4AA, T3AA, TGAA - autoantibodies (dog)	THYA	Serum (>2ml)	No gel tubes, to confirm immune mediated lymphocytic thyroiditis	~2 weeks (for all results)	

TGAA - thyroglobulin autoantibodies (dog)	TGAA	Serum	No gel tubes, to confirm immune mediated lymphocytic thyroiditis	3 - 5 days	
T4, fT4, T3, fT3, TSH, T4AA, T3AA, TGAA (dog)	T4CP	Serum (>2ml)	No gel tubes. Complete canine thyroid panel	~2 weeks (for all results)	
T4, fT4, T3, fT3, TSH (cat)	THYC	Serum	No gel tubes. Complete feline thyroid panel	~2 weeks (for all results)	

## Endocrinology - Adrenal/Pituitary

All tests include full reporting unless otherwise stated

Test	Code	Sample	Comments	Turn-around	
ACTH Stimulation Test (2 measurements)	ADR1	Pre and post serum	<p>No gel tubes. Used to help diagnose spontaneous hyperadrenocorticism, spontaneous hypoadrenocorticism and iatrogenic hyperadrenocorticism.</p> <ul style="list-style-type: none"> <li>Collect fasted baseline serum sample</li> <li>Inject 125 µg of synthetic ACTH intravenously or intramuscularly if patient is &lt;5kg. Otherwise use 250 µg. Studies showed that similar results can be obtained also by injecting 5 µg/kg of synthetic ACTH.</li> <li>For horses, give 1 U/kg IM of ACTH gel.</li> <li>Collect a 60 minute post-ACTH sample (2h for horses)</li> <li>Label tubes appropriately (Take sample 4-6 hours post-pill if monitoring response to Vetoryl/Trilostane)</li> </ul>	Same day	
ACTH Stimulation Test (3 measurements)	ADRC	Pre and post serum	<p>No gel tubes. Hyperadrenocorticism is rare in cats. The ACTH stimulation test has low sensitivity for diagnosing feline hyperadrenocorticism.</p> <ul style="list-style-type: none"> <li>Collect fasted baseline serum sample</li> <li>Inject 125 µg of synthetic ACTH intravenously</li> <li>Collect 60 and 90 minute post-ACTH samples</li> <li>Label tubes appropriately</li> </ul>	Same day	
Cortisol	COR	Serum	No gel tubes. Used as a screening test for hypoadrenocorticism or pre-trilostane dosing for monitoring hyperadrenocorticism	Same day	
Endogenous ACTH	ACTH	Frozen separated EDTA plasma	<p>No gel tubes. Help differentiating between pituitary dependent hyperadrenocorticism and adrenal neoplasia. In horses, it is a diagnostic indicator of pituitary pars intermedia dysfunction (PPID)</p> <ul style="list-style-type: none"> <li>Collect fasted blood sample into a plastic chilled EDTA tube (no glass tubes)</li> <li>Centrifuge immediately</li> <li>Transfer plasma into a chilled plastic plain tube</li> <li>Freeze immediately</li> <li>Sample MUST arrive frozen</li> </ul>	2 - 4 days	
Low Dose Dexamethasone Suppression Test	ADR2	Pre and 2 post serum	<p>No gel tubes. Used to help diagnose spontaneous hyperadrenocorticism.</p> <ul style="list-style-type: none"> <li>Collect fasted baseline serum sample</li> <li>Canine: Inject 0.015 mg/kg dexamethasone intravenously</li> <li>Feline: Inject 0.1 mg/kg dexamethasone intravenously</li> <li>Collect a 4 and 8 hour post-dexamethasone sample</li> <li>Label tubes appropriately</li> </ul>	Same day	

## Endocrinology - Adrenal/Pituitary

All tests include full reporting unless otherwise stated

High Dose Dexamethasone Suppression Test	ADR3	Pre and 2 post serum	No gel tubes. Used only once a diagnosis of hyperadrenocorticism has been made. This test helps to differentiate between pituitary dependent hyperadrenocorticism and adrenal neoplasia. <ul style="list-style-type: none"> <li>Collect fasted baseline serum sample</li> <li>CANINE: Inject 0.1 mg/kg dexamethasone intravenously</li> <li>FELINE: Inject 1.0 mg/kg dexamethasone intravenously</li> <li>Collect a 4 and 8 hour post-dexamethasone sample</li> <li>Label tubes appropriately</li> </ul>	Same day	
Dexamethasone Suppression Test (overnight method - horses)	ADR4	Pre and 2 post serum	Used to help diagnose pituitary pars intermedia dysfunction <ul style="list-style-type: none"> <li>Collect fasted baseline serum sample between 4pm and 6pm</li> <li>Inject 40ug/Kg dexamethasone intramuscular</li> <li>Collect at noon the next day post-dexamethasone sample</li> <li>Label tubes appropriately</li> </ul>	Same day	
Urine Cortisol:Creatinine Ratio	UCCR	Urine	Used as a screening test for hyperadrenocorticism. Clean, cystocentesis collected sample is preferred	3 - 4 days	
Aldosterone (baseline)	ALD1	Serum	For suspected hyperaldosteronism	~1 week	
Dynamic Aldosterone Test	ALD2	Pre and post serum	For suspected hyperaldosteronism.Performed as per an ACTH stimulation test	~1 week	
Dynamic 17-Hydroxyprogesterone Test (SHAP)	SHAP	Pre and post serum	To aid in the diagnosis of "atypical" hyperadrenocorticism. Performed as per an ACTH stimulation test	~1 week	
Canine adrenal profile	SHA1	Pre and post serum	17-Hydroxyprogesterone, androstenedione, oestradiol, cortisol. Performed as per an ACTH stimulation test	~1 week	
Combined Aldosterone and Renin			To aid the diagnosis of hyperaldosteronism (Conn's Disease)	Up to 2 weeks	
Ferret Adrenal Profile	FERC	Serum	17 Hydroxyprogesterone, androstenedione, oestradiol	~1 week	
Equine PPID Profile (Insulin, Glucose, Endogenous ACTH)	PPID	Frozen serum + frozen EDTA plasma + Ox-F	<ul style="list-style-type: none"> <li>Serum and EDTA plasma have to be transferred into plain tubes and then kept chilled.</li> <li>Contact the laboratory for advise on sending samples that must arrive chilled or frozen.</li> <li>Insulin samples may be basal (&gt;4h since any hard fee) or following oral carbohydrate challenge (60-90 mins after 0.45mls/kg Karo light syrup or 2h after 1g/kg dextrose powder)</li> </ul>	1 - 3 days	
Equine Metabolic Syndrome Profile (Insulin, Glucose, Triglycerides, Adiponectin)	EMS	Frozen serum + Ox-F	Insulin sample may be basal (>4h since any hard feed) or following oral carbohydrate challenge (60-90 mins after 0.45mls/kg Karo light syrup or 2h after 1g/kg dextrose powder)	1 - 3 days	

## Endocrinology - Reproduction

All tests include full reporting unless otherwise stated

Test	Code	Sample	Comments	Turnaround	
Anti-Mullerian Hormone (AMH)	AMH	Serum	Sensitive test for detection of ovarian tissue in mature cats and dogs. Useful to establish spay status in strays, even when bitches and queens are not showing signs of oestrus. Occasional false negative may occur in dogs if the progesterone dominated phase of cycle. Combined measurement of basal progesterone or dynamic test may help to determine status in such cases. Used also as a cryptorchid test to detect testicular tissue. In horses, it is used to identify granulosa cell tumours (GCTs)	up to 10 days	
Oestradiol	OES	Serum	Can be used as a screening test for ovarian remnant in dogs and cats showing signs of oestrus or excess production of oestradiol due to adrenal disease	3 - 4 days	
Dynamic Oestradiol Test	OESS	Pre and post serum	<b>FELINE:</b> This test can be used for ovarian remnant detection in queens not showing signs of oestrus <ul style="list-style-type: none"> <li>Collect fasted baseline serum sample</li> <li>Inject 0.32 µg of GnRH Buserelin (Receptal®; Intervet SP) intravenously. As a very small volume of drug is used, it is recommended to dilute with sterile water to 1:10 for injection.</li> <li>Collect a 3 hour post-Buserelin sample</li> <li>Label tubes appropriately</li> </ul> <b>CANINE:</b> Recommended test for ovarian remnant detection in bitches not showing signs of oestrus <ul style="list-style-type: none"> <li>Collect fasted baseline serum sample</li> <li>Inject 200 IU hCG (Chorulon®; Intervet SP) intravenously for dogs &lt;15 kg; 300 IU for dogs &gt;15 kg</li> <li>Collect a 90 minute post-hCG sample</li> <li>Label tubes appropriately</li> </ul>	3 - 4 days	
Oestrone Sulphate	OESH	Serum	Pregnancy test for horses (from day 110 and until 1 week prior to birth)	~1 week	
Pregnant Mare Serum Gonadotrophin (PMSG)	PMSG	Serum	Pregnancy test for horses (from day 45 to 110)	~1 week	
Progesterone	PRO	Serum	Used to help predict ovulation in bitches. Testing is recommended to begin from 7 days after the onset of season. Not recommended as a screening test for ovarian remnants in cats	Same day	
Dynamic Progesterone Test	PROS	Pre and post serum	<b>FELINE:</b> Recommended test for ovarian remnant detection in queens showing signs of oestrus <ul style="list-style-type: none"> <li>Collect fasted baseline serum sample</li> <li>Inject 500 IU hCG intravenously</li> <li>Collect a post-hCG sample 7 days later</li> <li>Label tubes appropriately</li> </ul>	Same day	
Testosterone	TES	Serum	Screening test for the presence of testicular tissue	3 - 4 days	



## Endocrinology - Reproduction

All tests include full reporting unless otherwise stated

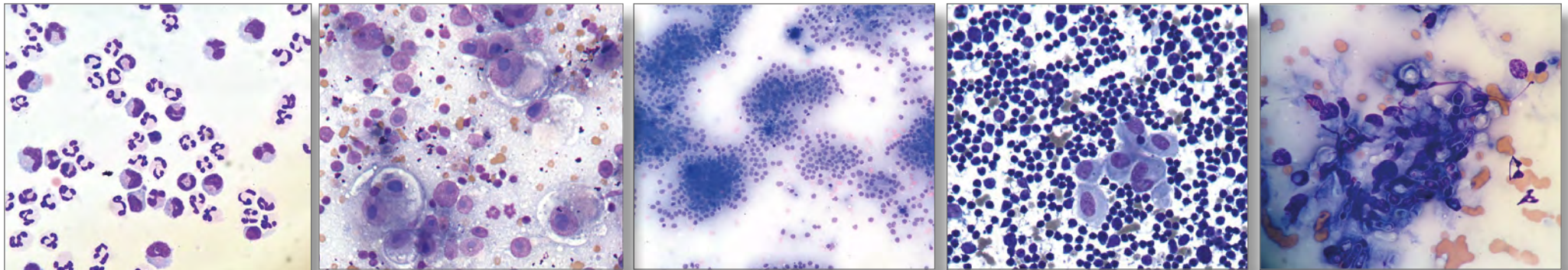
Test	Code	Sample	Comments	Turnaround	
Dynamic Testosterone Test	TESS	Pre and post serum	Used to detect presence of testicular tissue. <b>FELINE:</b> <ul style="list-style-type: none"> <li>Collect fasted baseline serum sample</li> <li>Inject 500 IU hCG intravenously</li> <li>Collect a post-hCG sample between 30 - 120 minutes</li> <li>Label tubes appropriately</li> </ul> <b>CANINE:</b> <ul style="list-style-type: none"> <li>Collect fasted baseline serum sample</li> <li>Inject 750 IU hCG intravenously</li> <li>Collect a post-hCG sample between 30 - 120 minutes</li> <li>Label tubes appropriately</li> </ul> <b>EQUINE:</b> <ul style="list-style-type: none"> <li>Collect fasted baseline serum sample</li> <li>Inject 6000 IU hCG intravenously</li> <li>Collect a post-hCG sample 30-120 minutes</li> <li>Label tubes appropriately</li> </ul>	3 - 4 days	
Bovine pregnancy-associated glycoproteins (PAGs)	PAG	Serum	Pregnancy test for cattle, sheep, goat (from day 28 after conception)	3 - 4 days	

## Endocrinology - Other

All tests include full reporting unless otherwise stated

Test	Code	Sample	Comments	Turnaround	
Insulin (add glucose - £6.50)	INS	Serum(insulin) Ox-F for glucose	For suspected insulinoma; measurement of contemporaneous glucose is required for interpretation. <ul style="list-style-type: none"> <li>Concurrent measurement of glucose is strongly recommended to correctly interpret the insulin result</li> </ul>	up to 1 week	
Insulin antibodies	INSA	Serum	Investigations of increased insulin requirements for diabetics	up to 2 weeks	
Insulin-like Growth Factor (IGF-1)	IGF	Serum	For suspected acromegaly or dwarfism.	up to 1 week	

Parathyroid Hormone (PTH) (add ionised calcium - £30)	PTH	Frozen EDTA plasma only (PTH), serum (iCa)	<p>For evaluation of suspected hyperparathyroidism.</p> <ul style="list-style-type: none"> <li>• Collect fasted blood sample into a plastic chilled EDTA tube (no glass tubes, avoid haemolysis and lipemia)</li> <li>• Gently invert several times to mix thoroughly</li> <li>• Centrifuge immediately</li> <li>• Transfer plasma into a chilled plastic plain tube (mix well again if using an EDTA tube)</li> <li>• Freeze immediately</li> <li>• Sample MUST arrive frozen</li> </ul> <p>Ionised calcium should be measured concurrently</p> <ul style="list-style-type: none"> <li>• Collect into a plain serum tube (no gel) ensuring the tube is completely filled without any air bubbles</li> <li>• Allow blood to clot (~15-20 min), centrifuge and transfer serum into a plain airtight tube, completely filling it (NO air)</li> </ul>	up to 10 days	
Parathyroid Hormone Related Peptide (PTHrp) (add ionised calcium - £30)	PTHR	Frozen EDTA plasma only (PTHrp), serum (iCa)	<p>For evaluation of suspected hypercalcaemia of malignancy.</p> <ul style="list-style-type: none"> <li>• Collect fasted blood sample into a plastic chilled EDTA tube (no glass tubes, avoid haemolysis and lipemia)</li> <li>• Gently invert several times to mix thoroughly</li> <li>• Centrifuge immediately</li> <li>• Transfer plasma into a chilled plastic plain tube</li> <li>• Freeze immediately</li> <li>• Sample MUST arrive frozen</li> </ul> <p>Ionised calcium should be measured concurrently</p> <ul style="list-style-type: none"> <li>• Collect into a plain serum tube (no gel) ensuring the tube is completely filled without any air bubbles</li> <li>• Allow blood to clot (~15-20 min), centrifuge and transfer serum into a plain airtight tube, completely filling it (NO air)</li> </ul>	up to 10 days	
Vitamin D3 (25 OH)	VITD	Frozen serum	Protect from light	1 - 2 weeks	
Salivary Cortisol	SAL1	Saliva			
Salivary Cortisol Stimulation Test	SAL2	2x Saliva (pre and post-ACTH samples)			



## Cytology

Batt Laboratories offers a comprehensive cytology service for all domestic species provided by experienced clinical pathologists.

Cytology is a rapid, simple, safe and cost-effective diagnostic method for the diagnosis of a spectrum of inflammatory and neoplastic diseases.

The turnaround time for all our cytology submissions is typically within 24 hours of receipt of the sample. Our clinical pathologists are also readily available to discuss results and to give further advice. Samples may be submitted as air-dried smears or fluid for processing.

Here are a few tips you should find helpful when submitting samples for cytology:

- **Clinical history and location** are vitally important in interpreting cytology samples. Submission forms should include a brief clinical history, site of collection and appearance of the lesion/organ sampled. Slides should have frosted ends to enable them to be appropriately labelled (patient name, site of aspiration) - this is particularly relevant when submitting samples from multiple lesions.

- **Exposure to formalin** of any kind renders samples un-readable using the traditional Romanowsky stain - cytology samples should therefore be sent in a sealed bag, separate from any biopsy specimens in formalin.
- When submitting **fluid samples** of any kind, it is best to provide both EDTA and plain tubes samples, as well as one or two air-dried direct smears.
- In cases where **bacterial culture** of a fluid may be required, a separate sample (in a plain tube) must be provided.
- **Bone marrow aspirates** should always be submitted with a concurrent EDTA blood sample (or no longer than 24h difference between sampling times). Bone marrow interpretation is frequently not possible in the absence of concurrent peripheral blood evaluation,

**Please don't hesitate to call for clarification of our assays and services, including sampling protocols or to discuss any additional requirements.**

## Cytology and Histology

All tests include full reporting unless otherwise stated

Test	Details	Code	Sample	Comments	Turnaround	
Cytology (FNA/smears) up to 3 sites		CYT	Air dried smears	Up to 3 sites from the same animal and up to 8 slides	Up to 1 day	
Cytology (FNA/smears) 4 or more sites		CYT+	Air dried smears	4 or more sites from the same animal or more than 8 slides	Up to 1 day	
Cytology (fluid filled masses)		CYTF	Fluid	Please submit fluid in both EDTA and plain tubes + 1-2 air dried direct smears	Up to 1 day	
Cytology (Cavity effusions)	Including cytology, total protein, albumin, globulin (cholesterol and triglyceride when appropriate)	EFF	Fluid + air dried smears	Please submit fluid in both EDTA and plain tubes + 1-2 air dried direct smears	Up to 1 day	
Cytology (CSF, synovial fluid)	Including cytology, total protein, total nucleated cell count, total red blood cell count	CCSF/ SYNC	Fluid + air dried smears	Please submit fluid in both EDTA and plain tubes + 1-2 air dried direct smears	Up to 1 day	
Cytology (urine/prostatic wash)		CYTU	Urine/Prostatic lavage	Please submit 5 ml fresh urine sample/ prostatic wash in plain and EDTA tubes	Up to 1 day	
Cytology (Bronchoalveolar lavage/Transtracheal wash)		BAL	Bronchoalveolar lavage/ Transtracheal wash	Please submit fluid in both EDTA and plain tubes + 1-2 air dried direct or sediment smears	Up to 1 day	
Bone marrow cytology		BM1	Air dried smears + EDTA tube	Please submit concurrent EDTA sample of peripheral blood (hae- matology + £23)	Up to 1 day	
Histopathology		HI1	Tissue in formalin	Up to 3 sites from the same animal, lesions less than 4cm in size	3 - 4 days	
Histopathology (multiple or large sites)		HI2	Tissue in formalin	4 or more sites from the same animal or lesions > 4cm in size	3 - 4 days	
Flow cytometry (immuno- phenotyping lymphoma/ leukaemia)	For confirmation and immuno- phenotyping of lymphoma/ leukaemia	FLOW	EDTA blood (for periphe- ral blood/leukaemia), cells suspended in fixative solution (for solid lesions/lymphoma).	As fixative solution, use serum sample from the same patient. Sample has to be fresh and reach the laboratory within 24h. Cytology sample (if from a lymph node or other organ) or blood smear should also be submitted	2 -3 days	
PARR (clonality testing for lymphoma)	For confirmation of lymphoma	PARR	Prestained smears, air dried smears, fluid, tissue in formalin	Following cytology/histology	up to 1 week	
Immunohistochemistry (lymphoma)	Various T and B lymphoid markers	ICC2	Tissue in formalin	Following histology	up to 2 weeks	
Immunohistochemistry (mast cell tumour)	cKit and Ki67	MCT	Tissue in formalin	Following histology	up to 2 weeks	
	ckit	KIT	Tissue in formalin	Following histology	up to 2 weeks	
	ki67	KI67	Tissue in formalin	Following histology	up to 2 weeks	
Further cyto/histochemical stains				Following cytology/histology	up to 2 weeks	
Further immunocyto/ immunohistochemical stains				Following cytology/histology	up to 2 weeks	
BRAF mutation	For confirmation of canine transitional cell carcinoma (TCC)	BRAF	Prestained smears, air dried smears, fluid, tissue in formalin, urine sediment	Please be aware the mutation is found in a large percentage (but not all) of canine TCCs	up to 1 week	

**PLEASE NOTE:** Any and all cytology slides should be packaged and submitted separately from histology samples as any exposure to formalin fumes can markedly alter cell morphology potentially rendering the sample non-diagnostic. **DO NOT** add formalin to any fluid samples being submitted for cytology. Turnaround time for histopathology may be longer than 4 days if the sample require further fixation or decalcification.

## Infectious Disease - Antigen / Antibody Testing Canine/Feline

All tests include full reporting unless otherwise stated

Test	Code	Sample	Comment (including methodology)	Turnaround	
Anaplasma phagocytophilum antibodies	SANA	Serum	Dog (ELISA) Cat (IFAT)	2 - 4 days	
Angiostrongylus vasorum (Lungworm) antigens	LWA	Serum	ELISA	Same day	
Aspergillus antibodies	ASPS	Serum	MAT	2 - 4 days	
Aujeszky virus (Pseudorabies) antibodies	AUVI	Serum	VNT	1 week	
Babesia antibodies	BAB	Serum	Dog (ELISA) Cat (IFAT)	2 - 4 days	
Bartonella henselae antibodies	BARB	Serum	IFAT	2 - 4 days	
Borrelia antibodies (IgM + IgG)	BOR	Serum	ELISA	2 - 4 days	
Borrelia antibodies (Western blot)	SBWB	Serum	Western blot	1 week	
Bornavirus antibodies	SBOR	Serum	IFAT	2 weeks	
Brucella canis antibodies	BRUC	Serum	RSAT + ELISA	10 days	
Canine Adenovirus (CAV) antibodies	CAV	Serum	IFAT	2 - 4 days	
Canine Distemper (CDV) antibodies	CDV	Serum	IFAT	2 - 4 days	
Canine Herpes (CHV) antibodies	HERA	Serum	IFAT	2 - 4 days	
Canine Parvovirus (CPV) antibodies	CPV	Serum	IFAT	2 - 4 days	
Canine Parvovirus (CPV) antigens	PARV	Faeces	ICG	Same day	
CAV, CDV, CPV - vaccine status dog	ADP1	Serum	IFAT	2 - 4 days	
CAV, CDV, CPV, Lepto - vaccine status dog	ADP	Serum	IFAT, MAT (Leptospira)	2 - 4 days	
CAV, CDV, CPV - vaccine status dog (gold standard)	ADP2	Serum	VNT, HAI	1 week	
Chlamydia antibodies	CHB	Serum	IFAT	2 - 4 days	
Clostridium difficile Toxin A and B	CDAB	Fresh faeces	ELISA	2 - 4 days	
Clostridium perfringens Enterotoxin	CLP	Fresh faeces	ELISA	2 - 4 days	
Cryptococcus antigens	CRYA	Serum	Agglutination	3 - 5 days	
Cryptosporidium antigens	CRYE	Fresh faeces	EIA	3 - 5 days	
Dirofilaria immitis antigens	DIR	Serum	ELISA	2 - 4 days	
Echinococcus antibodies	ECHA	Serum	ELISA	1 week	
Encephalitozoon cuniculi antibodies (IgG)	ECUN	Serum	IFAT	2 - 4 days	
Encephalitozoon cuniculi antibodies (IgG+IgM)	ECU2	Serum	IFAT	2 - 4 days	
Ehrlichia canis antibody (ELISA)	EHR	Serum	ELISA (dogs)	2 - 4 days	
Ehrlichia canis antibody (IFAT)	EHR2	Serum	IFAT (cats)	2 - 4 days	
Feline calicivirus (FCV) antibodies	FCA	Serum	IFAT	2 - 4 days	
Feline coronavirus antibody (FeCoV) - FIP	FIP	Serum	ELISA	2 - 4 days	



## Infectious Disease - Antigen / Antibody Testing Canine/Feline

All tests include full reporting unless otherwise stated

Test	Code	Sample	Comment (including methodology)	Turnaround	
Feline herpes virus (FHV) antibodies	FHV	Serum	IFAT	2 - 4 days	
Feline panleukopaenia (FPV) antibodies	FPV	Serum	IFAT	2 - 4 days	
Feline panleukopaenia (FPV) antigens	PARV	Faeces	EIA	Same day	
FCV, FHV, FPV - vaccine status cat	CHPS	Serum	IFAT	2 - 4 days	
FCV, FHV, FPV - vaccine status cat (gold standard)	CHP1	Serum	VNT, HAI	1 week	
FeLV antigen (ELISA)	FLV	Serum	ELISA - screening test	Same day	
FELV (IFAT)	FLV1	EDTA + Blood smear	IFAT - confirmatory test	1 week	
FIV antibodies (ELISA)	FIV	Serum	ELISA screening test	Same day	
FIV (IFAT)	FIV1	Serum	IFAT - confirmatory test	1 week	
FIV antibodies (Western blot)	FIV2	Serum	Western Blot - confirmatory test	7 days	
FeLV antigen and FIV antibodies (ELISA)	FLI	Serum, EDTA	ELISA - screening test	Same day	
FeLV, FIV & FeCoV (FIP)	FLIP	Serum	ELISA (FeLV, FIV), IFAT (FIP)	2 - 4 days	
Giardia antigens	GIA	Fresh faeces or 3 day pooled faeces	ICG	Same day	
Leishmania antibodies (ELISA)	SLEL	Serum	ELISA	2 days	
Leishmania antibodies (IFAT)	LEIS	Serum	IFAT	2 - 4 days	
Leptospira antibodies	LEP	Serum	MAT	2 - 4 days	
Listeria antibodies	SLIS	Serum	IFAT	2 - 4 days	
Microfilaria (Knott test)	KNOT	EDTA	Knott test	2 - 4 days	
Neospora caninum antibodies (IgM + IgG)	NEO	Serum	IFAT	2 - 4 days	
Rabies antibodies	RAB	Serum	FAVN (fluorescent antibody virus neutralisation)	up to 2 weeks	
Rickettsia conorii antibodies	RICC	Serum	IFAT	2 - 4 days	
Rickettsia rickettsii antibody	RICK	Serum	IFAT	2 - 4 days	
Rotavirus antigens	ROTA	Faeces	EIA	2 - 4 days	
Salmonella antibodies	SSAL	Serum	MAT	2 - 4 days	
Sarcoptes antibody (Canine only)	SAR	Serum	ELISA	2 - 4 days	
Tetanus (Clostridium) antibodies	TET	Serum	ICA	up to 2 weeks	
<b>NEW!</b> Tick-borne encephalitis antibodies (IgM)	TBEM	Serum	ELISA	3 - 5 days	
Tick-borne encephalitis antibodies (IgG)	TBEE	Serum, CSF	ELISA	3 - 5 days	
Toxoplasma antibodies (IgG + IgM)	TOX	Serum	ELISA	2 days	
Trypanosoma evansi (canine) antibodies	STRE	Serum	CATT	2 - 4 days	

## Infectious Disease - Equine

All tests include full reporting unless otherwise stated

Test	Code	Sample	Comment	Turnaround	
Anaplasma phagocytophilum antibodies	SANA	Serum	ELISA	2 - 4 days	
Anoplocephala perfoliata (Tape worm) antibodies	ANOP	Serum	ELISA	1 week	
Babesia antibodies (IFAT)	SBGE	Serum	IFAT	2 - 4 days	
Babesia antibodies (ELISA)	BABE	Serum	ELISA	3 - 5 days	
Babesia antibodies (Complement Fixation)	BACF	Serum	CFTs	1 week	
Borrelia antibodies (IgM + IgG)	BOR	Serum	IFAT	2 - 4 days	
Borrelia antibodies (Western blot)	SBWB	Serum	Western blot	1 week	
Bornavirus antibodies	SBOR	Serum	IFAT	up to 10 days	
Burkholderia mallei antibodies (Glanders)	SGLA	Serum	CFT	1 week	
Equine Herpes Virus 1 and 4 antibodies	EH14	Serum	ELISA	3 - 5 days	
Equine Infectious Anemia antibodies (Coggins)	EIAC	Serum	IFAT	1 week	
Equine Infectious Anemia antibodies (ELISA)	EIAE	Serum	ELISA	2 - 4 days	
Equine Viral Arteritis antibodies	SEVA	Serum	VNT	1 week	
Influenza A Virus antibodies	SEIV	Serum	HAH	1 week	
Leptospira antibodies	LEP	Serum	MAT	2 - 4 days	
Listeria antibodies	SLIS	Serum	IFAT	2 - 4 days	
Rotavirus antigens	ROTA	Faeces	EIA	2 - 4 days	
Salmonella antibodies	SALA	Serum	MAT	2 - 4 days	
Salmonella abortus equi antibodies	SSAE	Serum	Slow agglutination	1 week	
Streptococcus equi antibody (Strangles)	SEA	Serum	ELISA. Quantitative	1 week	
Tetanus (Clostridium) antibodies	TET	Serum	ICA	up to 2 weeks	
Theileria equi	THEI	Serum	ELISA	1 week	
Tick-borne encephalitis antibodies (IgG)	TBEE	Serum, CSF	ELISA	3 - 5 days	
Tick-borne encephalitis antibodies (IgM)	TBEM	Serum	ELISA	3 - 5 days	
Trypanosomas equiperdum (Dourine) antibodies	SDOU	Serum	CFTs	1 week	
West Nile Virus antibodies (IgG + IgM)	WNVE	Serum	ELISA	3 - 5 days	

## Infectious Disease - Farm Animal

All tests include full reporting unless otherwise stated

Test	Code	Sample	Comment	Turnaround	
Anaplasma phagocytophilum antibodies	SANA	Serum	IFAT	2 - 4 days	
Actinobacillus pleuropneumoniae antibodies	SAPP	Serum	ELISA	1 week	
Aspergillus antibodies	ASPS	Serum	MAT	2 - 4 days	
Aujeszky disease (Pseudorabies) antibodies	AUDI	Serum	VNT	2 - 4 days	
Babesia Antigen (Microscopic)	BABA	Blood smear, EDTA		2 - 4 days	
Bovine Herpes Virus 1 (IBR) antibodies	BHV1	Serum	ELISA	1 week	
Bovine Herpes Virus 1 (IBR) gE	BHVE	Serum	ELISA	1 week	
Bovine Herpes Virus 1 (IBR) gB	BHVB	Serum	ELISA	1 week	
Borellia antibodies (IgM + IgG)	BOR	Serum	ELISA	2 - 4 days	
Bornavirus antibodies	SBOR	Serum	IFAT	up to 10 days	
Brucella antibodies	BBRU	Serum	ELISA	3 - 5 days	
BVD Virus antibodies	SBVD	Serum, Milk	ELISA	1 week	
Caprine Arthritis Encephalitis Virus (Maedi-Visna) antibodies	SCAE	Serum	ELISA	1 week	
Chlamydia antibodies	CHB	Serum	IFAT	2 - 4 days	
Corynebacterium pseudotuberculosis antibodies	COPA	Serum	ELISA	1 week	
Coxiella burnetii antibodies	SCOX	Serum	IFAT	2 - 4 days	
Fasciola hepatica antibodies	SFAS	Serum, Milk	EIA	1 week	
Leptospira antibodies	LEP	Serum	MAT	2 - 4 days	
Listeria antibodies	SLIS	Serum	IFAT	2 - 4 days	
Maedi-Visna antibodies	MVIS	Serum	ELISA	1 week	
Mycoplasma hyopneumoniae antibodies	SMYP	Serum	ELISA	1 week	
Neospora caninum antibodies (IgM, IgG)	NEOB	Serum	ELISA	1 week	
Ostertagia ostertagi antibodies	OSOS	Milk, Bulk tank milk	ELISA	1 week	
Paratuberculosis antibodies (Johne's disease)	SPT	Serum, Milk	ELISA	1 week	

## Infectious Disease - Farm Animal

All tests include full reporting unless otherwise stated

Test	Code	Sample	Comment	Turnaround	
Parvovirus (SMEDI) antibodies	SMED	Serum	ELISA	1 week	
Porcine Reproductive and Respiratory Syndrome Virus antibodies	PRRS	Serum	ELISA	5 days	
Toxoplasma antibodies (IgG, IgM)	TOX	Serum	ELISA	2 days	

## Infectious Disease - Avian

All tests include full reporting unless otherwise stated

Test	Code	Sample	Comment	Turnaround	
Aspergillus antibodies	ASPS	Serum	MAT	2 - 4 days	
Aspergillus Galactomannan antigens	ASPG	Serum	ELISA	1 week	
Bornavirus antibodies	SBOR	Serum	ELISA	up to 10 days	
Chlamydia antibodies	CHB	Serum	IFAT	2 - 4 days	
Herpes virus (Pacheco's Disease) antibodies	SPAC	Serum	VNT	2 weeks	
Paramyxovirus aPMV-1 antibodies (Newcastle Disease)	NEWD	Serum	HAH	2 weeks	
West Nile Virus antibodies (IgG)	WNV	Serum	ELISA	1 week	

## Infectious Disease - Small Mammals

1ml unless indicated

Test	Code	Sample	Comment	Turnaround	
Adenovirus antibodies	GAV	Serum	Rabbit, Guinea pig, Rat, Mouse (IFAT)	1 week	
Cytomegalovirus antibodies	CMV	Serum	Mouse, Rat, Guinea pig (IFAT)	1 week	
Dirofilaria antigens	DIR	EDTA	Ferret (ELISA)	2 - 4 days	
Distemper virus antibodies	CDV	Serum	Ferret, Raccoon (IFAT)	2 - 4 days	
Encephalitozoon cuniculi antibodies (IgG)	ECUN	Serum	Rabbit, Guinea pig (IFAT)	2 - 4 days	

Encephalitozoon cuniculi antibodies (IgG+IgM)	ECU2	Serum	Rabbit, Guinea pig (IFAT)	2 - 4 days	
Ferret coronavirus serology	FCOV	Serum	ELISA	1 week	
Hantavirus antibodies	HANT	Serum	Rat, Mouse (IFAT)	1 week	
Lymphocytic Choriomeningitis Virus antibodies	LCVM	Serum	Guinea pig, Mouse, Hamster (IFAT)	1 week	
Myxomavirus antibodies	SMYX	Serum	Rabbit (IFAT)	1 week	
Sendai Virus antibodies	SSSV	Serum	Rabbit, Guinea pig, Rat, Mouse, Hamster (IFAT)	1 week	
Toxoplasma gondii antibodies (IgG+IgM)	TOX	Serum	Rabbit, Guinea pig (ELISA)	3 - 5 days	
Treponema paraluis-cuniculi antibodies	TRPP	Serum	Rabbit (Agglutination test)	3 - 5 days	

## Infectious Disease - Reptiles

Test	Code	Sample	Comment	Turnaround	
Cryptosporidium antigens	CRYR	Faeces, Regurgitated material, gastric lavage, stomach biopsy	IFAT	3 - 5 days	
Herpesvirus (TeHV-1 and TeHV-3) antibodies	SHTT	Serum, Heparinized plasma	Tortoise (VNT)	2 weeks	
Paramyxovirus/ferlavirus antibody	SRPF	Serum, Heparinized plasma	HAH	2 weeks	
Picornavirus antibodies	SPIC	Serum, Heparinized plasma	Tortoise (VNT)	2 weeks	



## Infectious Disease - PCR Canine/Feline

All tests include full reporting unless otherwise stated

Test	Code	Sample	Comment	Turnaround	
<b>QUALITATIVE PCR</b>					
Anaplasma phagocytophilum	ANAP	EDTA, CSF, Bone marrow, Synovial fluid, Tick		3 - 5 days	
Anaplasma platys	XAPL	EDTA, Tick		3 - 5 days	
Aelurostrongylus abstrusus (feline lungworm)	XAAB	BAL Faeces		3 - 5 days	
Angiostrongylus vasorum (canine lungworm)	XAVA	EDTA, BAL, Faeces		3 - 5 days	
Aspergillus species	ASPP	Nasal flush fluid, Plain swab, BAL, fresh tissue		3 - 5 days	
Babesia species	BABP	EDTA, Tick		3 - 5 days	
Bartonella henselae	BARP	EDTA, CSF		3 - 5 days	
Bordetella bronchiseptica	XBB	Nasal flush, Pharyngeal swab, Tracheal wash, BAL		3 - 5 days	
Bornavirus	XBOR	EDTA, CSF		3 - 5 days	
Borrelia (Lyme disease)	BORA	Synovial fluid/Synovium, Tick, CSF, Skin		3 - 5 days	
Brucella canis	BRUP	Swab, EDTA, semen, urine, abort material		3 - 5 days	
Campylobacter jejuni	XCJ	Faeces		3 - 5 days	
Neoehrlichia mikurensis	CNMK	EDTA, Tick		3 - 5 days	
Canine + Adenovirus 1 (CAV-1)	ADVP	EDTA, Liver, Urine		3 - 5 days	
Canine Adenovirus 2 (CAV-2)	ADV2	Pharyngeal swab, Tracheal wash, BAL		3 - 5 days	
Canine Circovirus	XCIR	Faeces, EDTA		3 - 5 days	
Canine Coronavirus (Enteric)	CORP	Faeces		3 - 5 days	
Canine Coronavirus (Respiratory)	CORR	Swab		3 - 5 days	
Canine Distemper virus (CDV)	CDVP	EDTA, CSF, Urine, Swab, Faeces		3 - 5 days	
Canine Herpesvirus (CHV)	HERP	EDTA, Swab, Aborted material		3 - 5 days	
Canine Parvovirus (CPV)	PARP	EDTA, Faeces		3 - 5 days	
Canine Parainfluenza virus (CpiV)	PIP	Nasal flush, Tracheal wash, BAL		3 - 5 days	
Chlamydia species	CHP	Swab, Faeces, Aborted material		3 - 5 days	

## Infectious Disease - PCR Canine/Feline

All tests include full reporting unless otherwise stated

Test	Code	Sample	Comment	Turnaround	
<b>QUALITATIVE PCR</b>					
Crenosoma vulpis	CREN	Swab, BAL, (plain or EDTA), faeces		3 - 5 days	
Cryptosporidium	XCRY	Faeces, Gastric lavage fluid		3 - 5 days	
Cytauxzoon incl. species diff.	CYZO	EDTA, tick		3 - 5 days	
Demodex	XDEM	Skin scraping	Semi-quantitative real-time PCR for D. canis, D. injai, D. cornei, D. cati, D. gatoi, D. felis	3 - 5 days	
Dermatophytes	DERP	Skin scraping, plucked hairs	PCR detection of M. canis, M. gypseum, M. persicolor, T. mentagrophytes, T. equinu, Trichophyton species of Arthroderma benhamiae, Trichophyton equinum, Trichophyton verrucosum, Trichophyton erinacei. Species differentiation possible in positive cases (+£35)	3 - 5 days	
Echinococcus	ECHI	Faeces, tissue		3 - 5 days	
Ehrlichia canis	EHRP	EDTA, Bone marrow, Tick		3 - 5 days	
Feline Calicivirus (FCV)	FCAP	Oronasal swabs, Tracheal wash, BAL, EDTA		3 - 5 days	
Feline Coronavirus (FCoV)	FIPP	Ascitic fluid, Tissue, CSF, Faeces		3 - 5 days	
Feline Herpesvirus (FHV)	HERP	Conjunctival / Oronasal swabs, Tracheal wash, Nasal flush fluid, EDTA		3 - 5 days	
<b>NEW!</b> Feline Morbillivirus (FeMV)	FMOR	Urine		3 - 5 days	
Feline Parvovirus (FPV)	PARP	EDTA, Faeces		3 - 5 days	
FeLV provirus	FLVP	EDTA, Bone marrow		3 - 5 days	
FIV provirus	FIVP	EDTA		3 - 5 days	
Giardia species	GIAP	Fresh faeces or 3 day pooled faeces		3 - 5 days	
Helicobacter species	XHEL	Vomit		3 - 5 days	
Hepatozoon canis/felis	XHZC	EDTA, Tick		3 - 5 days	
Influenza A Virus	XIFA	Nasal swab, Lymph node		3 - 5 days	
Leishmania	LEIP	Swab, aqueous humor, Bone marrow, Lymph node, Skin, EDTA		3 - 5 days	

## Infectious Disease - PCR Canine/Feline

All tests include full reporting unless otherwise stated

Test	Code	Sample	Comment	Turnaround	
<b>QUALITATIVE PCR</b>					
Leptospira species	LEPP	Urine, EDTA, Aborted material		3 - 5 days	
Mycoplasma (haemotropic) dog	HMB	EDTA		3 - 5 days	
Mycoplasma (respiratory/mucous membranes) dog	MCAN	BAL, ocular/throat swab, Aborted material		3 - 5 days	
Mycoplasma (haemotropic) cat	HMBC	EDTA	includes species differentiation	3 - 5 days	
Mycoplasma (respiratory/mucous membranes) cat	MFEL	BAL, ocular/throat swab, Aborted material		3 - 5 days	
Microfilaria species	DIRP	EDTA	if positive, differentiation is available for extra charge (+ £48)	3 - 5 days	
Neospora caninum	NEOP	Faeces, CSF		3 - 5 days	
Orthopoxvirus (pox)	OPXV	Scab/Crust		3 - 5 days	
Papillomavirus	XPAP	Skin		3 - 5 days	
Rickettsia	XRIC	EDTA, Skin, Tick		3 - 5 days	
<b>NEW!</b> Rustrela virus	XRUS	Brain tissue		3 - 5 days	
Salmonella	XSAL	Faeces		3 - 5 days	
Sarcoptes scabiei var. canis	XSAR	Skin scraping		3 - 5 days	
SARS-CoV-2	SARS	Deep nasal/pharyngeal swab		3 - 5 days	
Tick-borne Encephalitis virus	XTBE	CSF, Serum, Tick		3 - 5 days	
Toxoplasma gondii	TOXP	Faeces, CSF, Aborted material		3 - 5 days	
Tritrichomonas foetus	TRIC	Fresh faeces or 3 day pooled faeces		3 - 5 days	
<b>NEW!</b> Troglostronglyus brevior	XTBR	Faeces, EDTA, BAL		3 - 5 days	
Yersinia enterocolitica	YENT	Faeces		3 - 5 days	
<b>QUANTITATIVE PCR</b>					
Canine Distemper virus	CDVX	Swab		3 - 5 days	
Canine Parvovirus	PARX	Faeces		3 - 5 days	
Feline Coronavirus - FCoV	FIPX	Ascitic fluid, Faeces, EDTA		3 - 5 days	
FIV provirus	FIVX	EDTA		2 weeks	
Leishmania species	LEIX	Bone marrow, EDTA		3 - 5 days	
Microfilaria	MICX	EDTA		3 - 5 days	

## Infectious Disease - PCR Equine

All tests include full reporting unless otherwise stated

Test	Code	Sample	Comment	Turnaround	
Anaplasma phagocytophilum	ANAP	EDTA, Tick		3 - 5 days	
Babesia species	BABP	EDTA, Tick		3 - 5 days	
Bornavirus	XBVE	EDTA, CSF, Aqueous humour		3 - 5 days	
Borrelia species	BORA	Synovial fluid/Synovium, Tick, CSF, Skin		3 - 5 days	
Bovine Papillomavirus (Sarcoid)	XBP	Scab, Hairs, Tissue		3 - 5 days	
Coronavirus (ECoV)	XCVE	Faeces		3 - 5 days	
<b>NEW!</b> Dermatophilus Congolensis	DERC	Skin, Scab tissue		3 - 5 days	
Dermatophytes	DERP	Plucked hair from the active border of lesions		3 - 5 days	
Equine Herpes Virus 1 (EHV-1)	XA01	Dry swab, CSF, aborted material, EDTA	including differentiation of neutropathogenic variant	3 - 5 days	
Equine Herpes Virus 2 (EHV-2)	XA02	Dry swab		3 - 5 days	
Equine Herpes Virus 3 (EHV-3)	XH03	Swab, tissue		3 - 5 days	
Equine Herpes Virus 4 (EHV-4)	XA04	Swab, EDTA		3 - 5 days	
Equine Herpes Virus 5 (EHV-5)	XA05	Swab, EDTA		3 - 5 days	
Equine Viral Arteritis Virus	XEVA	Swab, EDTA, Semen		3 - 5 days	
Equine Influenza A Virus	XEIA	Swab		3 - 5 days	
Lawsonia intracellularis	XLAW	Faeces		3 - 5 days	
Leptospira species	LEPP	Urine and EDTA, Aborted material, Aqueous humor		3 - 5 days	
Parvovirus (EqPV-H)	PARE	EDTA, Serum		3 - 5 days	
Rhodococcus equi (R. Hoagii)	XRHO	Swab, Faeces		3 - 5 days	
Salmonella species	XSAL	Faeces		3 - 5 days	
Streptococcus equi equi (Strangles)	XSES	Swab, Lymph node		3 - 5 days	
Streptococcus equi equi / zooepidemicus	XSEE	Swab, Lymph node		3 - 5 days	
Taylorella equigenitalis	XTAY	Swab, Semen		3 - 5 days	
Tick-borne Encephalitis virus (TBEV)	XTBE	CSF, Tick, Serum		3 - 5 days	
West Nile Virus	XWNV	EDTA, CSF		3 - 5 days	

## Infectious Disease - PCR Farm Animal

All tests include full reporting unless otherwise stated

Test	Code	Sample	Comment	Turnaround	
<b>NEW!</b> Anaplasma ovis / Mycoplasma ovis	XAOM	EDTA		3 - 5 days	
Anaplasma phagocytophilum	ANAP	EDTA, Tick		3 - 5 days	
Actinobacillus pleuropneumoniae (porcine)	XAPP	Swab, Nasal lavage fluid		2 weeks	
Babesia species	BABP	EDTA, Tick	it also determines Cytauxzoon sp, Theileria sp, and include species differentiation	3 - 5 days	
Blue Tongue virus (BTV)	XBLU	EDTA blood		3 - 5 days	
Bordetella bronchiseptica	XBB	Swab		3 - 5 days	
Bornavirus	XBVE	EDTA, CSF		3 - 5 days	
Borrelia species	BORA	Synovial fluid/Synovium, Tick, CSF, Skin		3 - 5 days	
Bovine Coronavirus	BCV	Faeces, swab		3 - 5 days	
Bovine Herpesvirus 1 (BHV-1)	XBHP	Swab		3 - 5 days	
Bovine Parainfluenza Virus 3	XPB3	Swab, Nasal lavage fluid		3 - 5 days	
Bovine Respiratory Syncytial Virus	XBRV	Swab, Nasal lavage fluid		3 - 5 days	
Bovine Viral Diarrhoea Virus - Mucosal Disease	XBVD	EDTA, Milk, Faeces, Aborted material		3 - 5 days	
Brachyspira pilosicoli / hyodysenteriae	XBRA	Faeces		3 - 5 days	
Chlamydia species	CHP	Swab, Faeces, Milk, Tracheal lavage fluid, Urine, Aborted material		3 - 5 days	
Coxiella burnetii	XCOX	Swab, Faeces, Aborted material, Milk, Skin		3 - 5 days	
Cryptosporidium	XCRY	Faeces, Gastric lavage fluid		3 - 5 days	
<b>NEW!</b> Dermatophilus Congolensis	DERC	Skin, Scab tissue		3 - 5 days	
Dermatophytes	DERP	Plucked hair from the active border of lesions, Skin scab		3 - 5 days	
Histophilus somni	HISN	Swab, Nasal lavage fluid		3 - 5 days	
Influenza A Virus	XIA	Swab, Nasal lavage fluid		3 - 5 days	
Lawsonia intracellularis	XLAW	Faeces		3 - 5 days	
Leptospira species	LEPP	Urine and EDTA, Milk, Semen, Aborted material		3 - 5 days	
<b>NEW!</b> Listeria monocytogenes	XLMC	EDTA, aborted material		3 - 5 days	
Mannheimia haemolytica	MMGM	Swab, Nasal lavage fluid		3 - 5 days	
Mycobacterium paratuberculosis	XMPT	Faeces		3 - 5 days	
Mycoplasma bovis	XMB	Swab, Nasal lavage fluid, Milk, Synovial fluid		3 - 5 days	
Mycoplasma haemolamae	XMHL	EDTA	Llama, alpaca	3 - 5 days	



Mycoplasma hyopneumoniae	XMHP	Swab, Nasal lavage fluid		3 - 5 days	
Mycoplasma suis	XMS	EDTA		3 - 5 days	
Neospora caninum	NEOP	Aborted material		3 - 5 days	
Pasteurella multocida	XPAM	Swab, Nasal lavage fluid		3 - 5 days	
Porcine Circovirus 2	XMS	Swab, EDTA, Aborted material		3 - 5 days	
Porcine Coronavirus (TGE)	XTGE	Faeces		3 - 5 days	
Porcine Parvovirus (PPV)	XPPV	Swab, EDTA, Aborted material		3 - 5 days	
Porcine Reproductive and Respiratory Syndrome Virus	XPRR	Swab, Nasal lavage fluid, EDTA, Semen, Aborted material	Includes differentiation EU/NA/HP-NA	3 - 5 days	
Toxoplasma gondii	TOXP	Aborted material		3 - 5 days	
Tritrichomonas foetus	TRIC	Swab, Prepuce lavage		3 - 5 days	

## Infectious Disease - PCR Avian

All tests include full reporting unless otherwise stated

Test	Code	Sample	Comment	Turnaround	
Adenovirus	ADVP	Swab or Tissue		3 - 5 days	
<b>NEW!</b> Avian Haemosporidia (Avian Malaria)	XAHP	EDTA		3 - 5 days	
Bornavirus	XABV	Swab	PaBV-2, PaBV-3, PaBV-4, and PaBV-7	3 - 5 days	
Chlamydia species	PSIT	Cloacal and/or throat swab, Faeces		3 - 5 days	
Circovirus (pigeon)	CIRP	EDTA, Swab, Feather, Faeces		3 - 5 days	
Circovirus (PBFD virus)	XPCV	EDTA, Swab, Feather, Faeces		3 - 5 days	
Psittacine Circovirus (PBFD)	PBFD	EDTA, Feather	Abnormal or suspicious-looking feathers are ideal for PBFD	3 - 5 days	
Herpesviruses (Pacheco's disease)	XAHV	EDTA, Swab, Feather, Faeces		3 - 5 days	
Mycoplasma gallisepticum / synoviae	XMGA	Swab, Tissue, Faeces		3 - 5 days	
Paramyxovirus (aPMV-1)	XPAR	Swab		2 weeks	
Polyoma Virus	PYV	EDTA, Feather, Swab		3 - 5 days	
Pox (Avipox virus)	POX	Skin, Scab, Lesion		3 - 5 days	
Reovirus	XREO	Swab, Faeces, Tissue		3 - 5 days	
Salmonella species	XSAL	Faeces, Swab, Tissue, Eggs		3 - 5 days	
Avian Sex Determination	ADS	EDTA, Feathers		1 week	
Tritrichomonas foetus	XATR	Swab		3 - 5 days	
<b>NEW!</b> Usutu virus	XUSU	EDTA, Serum, Tissue		3 - 5 days	
West Nile Virus	WNVP	Swab		3 - 5 days	

## Infectious Disease - PCR Small Mammals

All tests include full reporting unless otherwise stated

Test	Code	Sample	Comment	Turnaround	
Bordetella bronchiseptica	XBB	Swab	Rabbit	3 - 5 days	
Adenovirus	ADVP	Swab	Guinea pig	3 - 5 days	
Chlamydia species	CHP	Swab		3 - 5 days	
Coronavirus (enteric+systemic)	CEST	Faeces	Ferret	3 - 5 days	
Cryptosporidia	XCRY	Faeces		3 - 5 days	
Dermatophytes	DERP	Plucked hair from the active border of lesions, Skin scab	Rabbit, Guinea pig	3 - 5 days	
Distemper	CDVP	Swab, Urine, CSF, EDTA	Ferret, Raccoon	3 - 5 days	
Encephalitozoon cuniculi	ECUP	Urine, CSF		3 - 5 days	
European Brown Hare Syndrome Virus	XBHS	Faeces, Tissue, Urine, Liver	Hare	3 - 5 days	
Francisella tularensis	XFT	Swab, Lymph node, Tissue	Rabbit, Mouse	3 - 5 days	
Giardia	GIAP	Faeces		3 - 5 days	
Helicobacter species	XHEL	Tissue, Vomitus	Ferret, Hamster, Mouse	3 - 5 days	
Influenza A Virus	IAVR	Swab		3 - 5 days	
Lawsonia intracellularis	XLAW	Faeces		3 - 5 days	
Leptospira species	LEPP	Urine and EDTA, Tissue		3 - 5 days	
Microfilaria	MICX	EDTA	Ferret	3 - 5 days	
Mycoplasma pulmonis	XMP	Swab, Tissue	Rat, Mouse	3 - 5 days	
Myxoma virus	MYXO	Swab	Rabbit	3 - 5 days	
Orthopoxvirus	XOPV	Scab	Rabbit, Guinea pig, Rat, Mouse	3 - 5 days	
Parvovirus (Aleutian mink disease)	XAMD	Swab, EDTA, Faeces	Ferret	3 - 5 days	
Pasteurella multocida (toxin producing)	XPAM	Swab	Rabbit	3 - 5 days	
Rabbit Haemorrhagic Disease (RHD)	XRHD	Fresh liver (in saline, no formalin), EDTA, Faeces, Swab, Urine	Rabbit. Including differentiation RHDV1 / RHDV2	3 - 5 days	
Salmonella species	XSAL	Faeces, Swab, Tissue		3 - 5 days	
Sarcoptes scabiei var. canis	XSAR	Skin scraping	Rabbit, Guinea pig, Ferret	3 - 5 days	
Toxoplasma gondii	TOXP	CSF, Tissue	Rabbit, Guinea pig	3 - 5 days	
Treponema paraluis-cuniculi	XTRE	Scab, Swab, Tissue	Rabbit	3 - 5 days	

## Infectious Disease - PCR Reptiles / Amphibians/ Fish

All tests include full reporting unless otherwise stated

Test	Code	Sample	Comment	Turnaround	
Adenovirus	ADVP	Swab, Tissue	Reptiles	3 - 5 days	
Arenavirus / Inclusion Body Disease	XIBD	Swab, EDTA, Tissue	Boas, Pythons	3 - 5 days	
Batrachochytrium dendrobatidis	XBDB	Swab, Tissue	Amphibians	2 - 4 days	
Batrachochytrium salamandrivorans	XBS	Swab, Tissue	Amphibians	3 - 5 days	
Carp Edema Virus (CEV)	XCEV	Tissue	Carp	3 - 5 days	
Chlamydia species	CHP	Swab, Nasal lavage fluid, Tissue	Reptiles, Amphibians	3 - 5 days	
Cryptosporidia	XCRY	Faeces, Gastric lavage fluid	Reptiles. Differentiation performed if positive for £21.00	3 - 5 days	
<b>NEW!</b> Devriesea agamarum	XDAM	Swab, Tissue	Lizards	3 - 5 days	
Encephalitozoon pogonae	ENPO	Tissue, faeces	Bearded dragons	3 - 5 days	
Entamoeba invadens	ENIN	Tissue, faeces	Snakes	3 - 5 days	
Entamoeba spp.	ENSP	Tissue, faeces	Reptile	3 - 5 days	
Herpesvirus	HERP	Swab, Tissue	Reptiles, Frog, Toad, Koi carp	3 - 5 days	
Intranuclear Coccidians (TINC)	XINC	Swab, Nasal lavage fluid, Tissue	Tortoises, turtles	3 - 5 days	
Iridovirus	XIRI	Swab, Skin, Liver	Lizards	3 - 5 days	
Mycoplasma species	XMAP	Swab, Nasal lavage fluid	Tortoises, Turtles, Snakes	3 - 5 days	
Nidoviruses	XNID	Swab, Tracheal lavage fluid, Tissue	Phyttons, Boa	3 - 5 days	
Nidoviruses (Shingleback Nidovirus)	NIDO	Swab, Tracheal lavage fluid	Tiliqua spp.	3 - 5 days	
Ophidiomyces ophiodiicola	OPOP	Swab, Skin, Tissue	Snakes	3 - 5 days	
Paramyxoviruses/Ferlaviruses	XPFV	Swab, Tracheal lavage fluid, Tissue	Reptiles	3 - 5 days	
Picornavirus (virus X)	XPIC	Swab, Tissue	Tortoises	3 - 5 days	
Ranaviruses	XRAN	Swab, Tissue	Reptiles, Amphibians, Fish	3 - 5 days	
Reoviruses	XREO	Swab, BAL, Tissue	Reptiles	3 - 5 days	
Salmonella species	XSAL	Faeces	Reptiles, Amphibians	3 - 5 days	
Sunshinevirus	XSUN	Swab, Tissue	Pythons	3 - 5 days	

## Infectious Disease - PCR Bees

All tests include full reporting unless otherwise stated

Test	Code	Sample	Comment	Turnaround	
Chronic Bee Paralysis Virus	CBPV	Bees		3 - 5 days	
Deformed Wing Virus (DWV)	DWVP	Bees		3 - 5 days	
Melissococcus plutonius (EFB)	EFBP	Bees, bee larvae		3 - 5 days	
Nosemosis (microscopical)	NMSP	30-40 dead bees	If positive, differentiation Nosema apis / nosema ceranae	3 - 5 days	
Paenibacillus larvae	PBLP	Honey in plastic bag	Honey from cells close to the brood	10 days	
Sacbrood virus	SBVP	Bee larvae		3 - 5 days	

## PCR Profiles - Canine

All tests include full reporting unless otherwise stated

Test	Includes	Code	Sample	Comment	Turnaround	
Canine Anaemia Profile	Babesia species, Ehrlichia canis, Anaplasma phagocytophilum, Haemotropic Mycoplasma species	CAPP	EDTA		3 - 5 days	
Canine Diarrhoea Profile	Coronavirus, Circovirus, Parvovirus, Giardia species, Cryptosporidia species	XCDP	Faeces		3 - 5 days	
Canine Eye Profile	Herpesvirus, Chlamydia species, Mycoplasma species	XCEP	Ocular / conjunctival Swabs		3 - 5 days	
<b>NEW!</b> Canine Lungworm Profile	Angiostrongylus vasorum, Crenosoma vulpis	CALU	Faeces, BAL, EDTA blood		3 - 5 days	
Canine Neurology Profile - Small	Distemper virus, Neospora caninum, Toxoplasma gondii, CSF protein.	CNPS	CSF		3 - 5 days	
Canine Neurology Profile - Large	Anaplasma phagocytophilum, Neospora caninum, Toxoplasma gondii, Distemper virus, plus C-reactive protein, Tick-Borne Encephalitis antibody, IgA and CSF protein	CNPC	CSF		3 - 5 days	
<b>Updated!</b> Canine Respiratory Profile 1	Parainfluenza virus, Canine Respiratory Coronavirus, Mycoplasma species	XCR1	Swab, nasal flush, Tracheal wash, BAL fluids		3 - 5 days	
<b>Updated!</b> Canine Respiratory Profile 2	Adenovirus, Canine respiratory Coronavirus, Parainfluenza virus, Mycoplasma species, Bordetella bronchiseptica	XCR2	Swab, nasal flush, Tracheal wash, BAL fluids		3 - 5 days	
<b>Updated!</b> Canine Respiratory Profile 3	Adenovirus, Influenza A virus, Parainfluenza Virus, Herpesvirus, Canine Respiratory Coronavirus, Bordetella Bronchiseptica, Mycoplasma species, Distemper virus	XCR3	Swab, nasal flush, Tracheal wash, BAL fluids		3 - 5 days	
Canine Reproduction Profile	Herpesvirus, Chlamydia species, Mycoplasma species, Brucella canis	XCRP	Swab, aborted material		3 - 5 days	

## PCR Profiles - Feline

All tests include full reporting unless otherwise stated

Test	Includes	Code	Sample	Comment	Turnaround	
Feline Diarrhoea Profile	Coronavirus, Tritrichomonas foetus, Giardia species, Parvovirus, Cryptosporidia species	XFDP	Faeces		3 - 5 days	
Feline Eye Profile	Herpesvirus, Chlamydia species, Mycoplasma felis	FEVP	Ocular / conjunctival Swabs		3 - 5 days	
Feline Flea Profile	Haemotropic mycoplasma (including species differentiation), Rickettsia, Bartonella henselae	FLE1	EDTA, flea		3 - 5 days	
Feline Lungworm	Aelurostrongylus abstrusus, Troglostrongylus brevius	FELU	Faeces, BAL, EDTA blood		3 - 5 days	
Feline Neurology Profile	Bornavirus, Coronavirus, Toxoplasma gondii, Bartonella henselae	XFN	CSF		3 - 5 days	
Feline Respiratory Profile 1	Calicivirus, Herpesvirus	XFR1	Swab, nasal flush, Tracheal wash, BAL fluids		3 - 5 days	
<b>NEW!</b> Feline Respiratory Profile 2	Calicivirus, Herpesvirus, Chlamydia species, Mycoplasma felis	XFR2	Swab, nasal flush, Tracheal wash, BAL fluids		3 - 5 days	
Feline Respiratory Profile 3	Calicivirus, Herpesvirus, Chlamydia species	XFR3	Swab, nasal flush, tracheal wash, BAL fluids		3 - 5 days	
Feline Respiratory Profile 4	Calicivirus, Herpesvirus, Chlamydia species, Bordetella bronchiseptica, Mycoplasma felis	XFR4	Swab, nasal flush, Tracheal wash, BAL fluids		3 - 5 days	
Feline Reproduction Profile	Herpesvirus, Chlamydia species, Mycoplasma felis	XFRP	Swab, Aborted material		3 - 5 days	

## PCR Profiles - Equine

All tests include full reporting unless otherwise stated

Test	Includes	Code	Sample	Turnaround	
Equine Anaemia Profile	Anaplasma phagocytophilum, piroplasmidia (Babesia, Theileria species)	XEEA	EDTA	3 - 5 days	
Equine Eye Profile	Herpesvirus 2 and 5	XEEP	Ocular / conjunctival Swabs	3 - 5 days	
Equine Respiratory Profile 1	Herpesvirus 1 and 4	XER1	Plain swab	3 - 5 days	
Equine Respiratory Profile 2	Herpesvirus 1 and 4, Influenza A virus	XER2	Plain swab	3 - 5 days	
Equine Respiratory Profile 3	Herpesvirus 1, 4, Influenza A virus, Streptococcus equi equi / zooepidemicus	XER3	Plain swab	3 - 5 days	
Equine Respiratory Profile 4	Herpesvirus 1, 4, 5, Influenza A virus, Streptococcus equi equi, equine coronavirus	XER4	Plain swab	3 - 5 days	
Equine Respiratory Profile - Foal	Herpesvirus 1 and 4, Influenza A virus, Rhodococcus equi/hoagii (incl vapA)	XERF	Swab, Nasal flush, Tracheal wash, BAL fluids	3 - 5 days	

## PCR Profiles - Equine

All tests include full reporting unless otherwise stated

Test	Includes	Code	Sample	Turnaround	
Camelid Abortion Profile	Leptospira, Toxoplasma gondii, Chlamydia	CABP	Aborted material, plain swab	3 - 5 days	
Equine Abortion Profile	Herpesvirus 1 and 4, Equine Viral Arteritis, Leptospira species	XEAP	Swab, Aborted material	3 - 5 days	
Uveitis Profile	Leptospira Ab, PCR: Leptospira, Herpesvirus 1	UVEI	Aqueous humour	3 - 5 days	
<b>NEW!</b> Foal Diarrhoea profile	Coronavirus, Lawsonia intracellularis, Rhodococcus hoagii, inc vapA	XFD	Faeces	3 - 5 days	

More PCR profiles available upon request

## PCR Profiles - Farm Animal

All tests include full reporting unless otherwise stated

Test	Includes	Code	Sample	Turnaround	
Bovine Abortion Profile	Bacteriology, PCR: Neospora caninum, Coxiella burnetii, Chlamydia species, BVDV	XBAP	Aborted material, plain swab	3 - 5 days	
Bovine Respiratory Profile 1	Bacteriology, PCR: BRSV, BPIV-3, Mycoplasma bovis	XBRP	Plain swab, Nasal flush fluid	3 - 5 days	
Bovine Respiratory Profile 2	Bacteriology, PCR: Mannheimia haemolytica, Pasteurella multocida, Histophilus somni, Mycoplasma bovis	XBR2	Plain swab, Nasal flush fluid	3 - 5 days	
Camelid Abortion PCR Profile	PCR: Leptospira species, Toxoplasma gondii, Chlamydia species	XCAP	Aborted material, plain swab	3 - 5 days	
Mastitis PCR Profile	PCR assays for 16 mastitis pathogens (including Mycoplasma, yeast, Prototheca species) and $\beta$ -lactamase-gene (no sensitivities)	XMAS	Milk	3 - 5 days	
Small Ruminant Abortion Profile	Bacteriology, PCR: Chlamydia species, Coxiella burnetii	XSRA	Aborted material, plain swab	3 - 5 days	
Porcine Respiratory Profile	Bacteriology, PCR: M. hyopneumoniae, APP, PRRSV, influenza AV, P. multocida (toxin producing)	XPRP	Nasal lavage and/or swab plus Bacterial swab	3 - 5 days	
Porcine Reproduction PCR Profile	PCR: PPV, PRRSV, PCV-2, Leptospira species, Chlamydia species	XPRE	Aborted material, plain swab	3 - 5 days	

## PCR Profiles - Tick-Borne Disease

All tests include full reporting unless otherwise stated

Test	Includes	Code	Comment	Turnaround	
Tick Borne Disease	Borrelia species, Tick-Borne Encephalitis virus, Babesia species, Anaplasma phagocytophilum, Ehrlichia canis, Hepatozoon canis.		Serology and PCR testing available upon request. The selection of samples and tests to perform depend on the time of exposure and clinical signs.	Contact the laboratory	



## PCR Profiles - Avian

All tests include full reporting unless otherwise stated

Test	Includes	Code	Sample	Comment	Turnaround	
Avian 1	Sex determination, Circovirus (Beak and Feather Disease - PBFD)	XAV1	EDTA, Feathers	Abnormal or suspicious-looking feathers are ideal for PBFD	1 week	
Avian 2	Polyomavirus, PBFD	XAV2	EDTA, Feathers	Abnormal or suspicious-looking feathers are ideal for PBFD	1 week	
Avian 3	Polyomavirus, PBFD, Sex determination	XAV3	EDTA, Feathers	Abnormal or suspicious-looking feathers are ideal for PBFD	1 week	
Avian 4	Polyomavirus, PBFD, Sex determination, Herpesvirus	XAV4	EDTA, Feather plus Cloacal swab for Herpes	Abnormal or suspicious-looking feathers are ideal for PBFD	1 week	
Avian 5	Polyomavirus, PBFD, Herpesvirus, Chlamydia, Bornavirus	XAV5	Swab, EDTA and Feathers	PBFD - Abnormal or suspicious-looking feathers. Chlamydia (Psitticosis) - Cloacal and/or throat swab. Bornavirus - 4 - 8 plucked chest feathers	1 week	
Avian 6	Polyomavirus, PBFD, Chlamydia	XAV6	Swab, EDTA and Feathers	PBFD - Abnormal or suspicious-looking feathers. Chlamydia (Psitticosis) - Cloacal and/or throat swab.	1 week	

## PCR Profiles - Small mammals

All tests include full reporting unless otherwise stated

Test	Includes	Code	Sample	Comment	Turnaround	
Respiratory Profile Ferret	Distemper virus, Influenza A virus, SARS-CoV-2	ZRRF	Plain swab, BAL, tissue		3 - 5 days	
<b>NEW!</b> Respiratory Profile Rat/Mouse	Mycoplasma pulmonis, Chlamydia, Bordetella Bronchiseptica	XRRM	Swab, BAL		3 - 5 days	
Respiratory Profile Rabbit	Bordetella bronchiseptica, Chlamydia, toxigenic Pasteurella multocida	XRRP	Swab		3 - 5 days	

## PCR Profiles - Reptiles / Amphibians / Fish

All tests include full reporting unless otherwise stated

Test	Includes	Code	Sample	Turnaround	
Quarantine Profile (Lizard)	Adenovirus, Ranavirus, Reovirus	XQPL	Swab	3 - 5 days	
Quarantine Profile (Boa, Python)	Adenovirus, Reovirus, Arenavirus, Paramyxovirus/Ferlavirus, Mycoplasma species, Nidovirus	XQPS	Swab, Tracheal lavage fluid, EDTA	3 - 5 days	
Quarantine Profile (Colubrid, Viper)	Adenovirus, Ophidiomyces ophiodiicola, paramyxoviruses/ferlavruses, Reoviruses	XQPV	Swab	3 - 5 days	
Quarantine Profile (Turtle/Tortoise)	Testudinid Herpesvirus 1 and 3 (serology), Mycoplasma agassizii (PCR), Picornavirus (PCR), Ranavirus (PCR), Herpesvirus (PCR)	XQPT	Swab, nasal lavage plus Heparinized plasma	1 - 2 weeks	
Respiratory Profile Turtle/Tortoise - Small	Herpesvirus, Mycoplasma agassizii	XRPT	Swab, Nasal lavage fluid	3 - 5 days	
Respiratory Profile Turtle/Tortoise - Large	Herpesvirus, Mycoplasma agassizii, Picornavirus	XRTL	Swab, Nasal lavage fluid	3 - 5 days	
Neurological/Respiratory Profile (Pythons)	Adenovirus, Reovirus, Arenavirus, Paramyxovirus/Ferlavirus, Nidovirus, Mycoplasma species	XRNS	Swab, Tracheal lavage, EDTA	3 - 5 days	
Neurological/Respiratory Profiles (Boas)	Adenovirus, Arenavirus, Paramyxovirus/Ferlavirus, Reovirus	XRNB	Swab and EDTA	3 - 5 days	
Aquatic Turtle Profile	Herpesvirus, Mycoplasma, Ranavirus	ATP	Swab, Nasal lavage fluid	3 - 5 days	
Amphibian Profile	Batrachochytrium dendrobatidis, Batrachochytrium salamandrivorans, Ranavirus	XAP	Swab and Tissue	3 - 5 days	
Skin Profile (Lizard)	Mycology. PCR: Adenovirus, Iridovirus, Ranavirus, Devriesea agamarum	XLSK	Skin	3 - 5 days	
Koi Carp Profile	Koi Herpsvirus, Carp Edema virus	KCPR	Tissue	3 - 5 days	

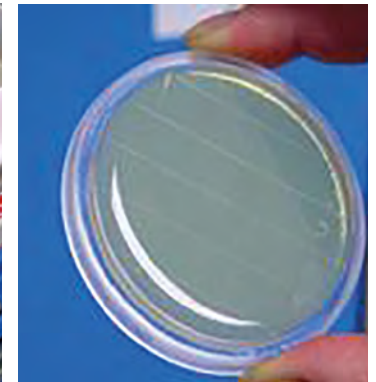
## Travel Profiles

All tests include full reporting unless otherwise stated

Test	Includes	Code	Sample	Comment	Turnaround	
Canine Travel Profile (Southern Europe)	Serology: Leishmania, Ehrlichia canis, Babesia species, Rickettsia sp. Antigen: Dirofilaria immitis. PCR: Hepatozoon, Microfilaria, Anaplasma platys	CTP2	EDTA and Serum	Southern Spain, Balearic Islands, Canary Islands, Portugal, Southern France, Greece, Southern Italy, Croatia, Turkey, Albania, Southern Romania, Bulgaria, Serbia, Bosnia.	3 - 5 days	
Canine Travel Profile (Eastern Europe)	Serology: Babesia species, Anaplasma phagocytophilum, Rickettsia species. Antigen: Dirofilaria immitis. PCR: Microfilaria	CTP4	EDTA and Serum	Poland, Czech Republic, Hungary, Ukraine, Slovakia, Northern Romania, Russia	3 - 5 days	
Canine Travel Profile (Northern Central Europe)	Serology: Borrelia, Neospora caninum, Anaplasma phagocyto- philum, Babesia. Antigen: Dirofilaria immitis.	CTP5	EDTA and Serum		3 - 5 days	
<b>NEW!</b> Canine Travel Profile (USA)	Ab: Leishmania, Babesia, Rickettsia rickettsii, Ehrlichia. Ag: Dirofilaria immitis. PCR: Hepatozoon, Microfilaria, Anaplasma Platys	CTP6	EDTA and Serum		3 - 5 days	
<b>Updated!</b> Canine Travel Profile - Acute	FBC, PCR: Piroplasmida, Leishmania, Ehrlichia, Hepatozoon, Anaplasma Platys, Microfilaria	CTP7	EDTA and Serum		3 - 5 days	
<b>NEW!</b> Feline Travel Profile (South/Eastern Europe)	Serology: Leishmania, Rickettsia felis, Bartonella henselae, FIV. Antigen: FeLV. PCR: Hepatozoon, Microfilaria, Piroplasmida.	FTP1	EDTA and Serum		3 - 5 days	
<b>NEW!</b> Feline Travel Profile (Northern/Central Europe)	Serology: Toxoplasma, Bartonella henselae, Rickettsia felis. PCR: Anaplasma, Haemotropic mycoplasma (including differentiation)	FTP2	EDTA and Serum		3 - 5 days	
<b>NEW!</b> Feline Travel Profile - Acute	FBC, PCR: Piroplasmida, Anaplasma Phagocytophilum, Hae- motropic mycoplasma (including differentiation), Hepatozoon	FTP3	EDTA and Serum		3 - 5 days	
Leishmania Profile	FBC, total protein, albumin, globulin, creatinine, urea, ALT, AST, ALP, UPC, Leishmania (ELISA), serum protein electrophoresis (SPE)	LEIL	EDTA, Serum, Urine		3 - 5 days	
Vector-borne diseases Profile	Serology: Borrelia, Babesia species, Anaplasma phagocytophilum	VBDP	EDTA or serum		3 - 5 days	

## Microbiology at BattLab

- Exact identification of both aerobic and anaerobic bacteria by **Matrix-Assisted Laser Desorption/Ionization Time-of-Flight mass-spectrometer (MALDI-TOF)**. This technology generates characteristic mass spectral fingerprints, that are unique signatures for each microorganism and are thus ideal for an accurate microbial identification at the genus and species level.
- **Extensive antibiotic sensitivity panels** tailored on the isolated bacteria. These are performed with microdilution technology providing **minimum inhibitory concentration (MIC)** for selected antibiotics based on Clinical and Laboratory Standards Institute (CLSI) guidelines and European Committee on Antimicrobial Susceptibility Testing (EUCAST). This quantitative method of susceptibility testing helps determine which class of antibiotic is most effective. This information can lead to an appropriate choice of an antibiotic that will increase chances of treatment success and help in the fight to reduce antibiotic resistance.
- Extensive antibiotic sensitivity panels with **reserve antibiotics** are available for exceptional cases and upon request.
- **Fungal cultures** including Dermatophytes.
- **Serology and PCR tests** for selected bacteria and fungi.



## Microbiology

All tests include full reporting unless otherwise stated

Test	Includes	Code	Sample	Comment	Turnaround	
Aerobic Culture	Aerobic bacterial cultures, systemic and topical (where appropriate) antibiotic sensitivities	CUL1	Charcoal swab	All species	1 - 5 days	
Aerobic Culture Additional Site	Aerobic bacterial cultures, systemic and topical (where appropriate) antibiotic sensitivities	CU1+	Charcoal swab	All species	1 - 5 days	
Aerobic and Anaerobic Culture	Aerobic and anaerobic bacterial cultures, yeasts culture, systemic and topical (where appropriate) antibiotic sensitivities	CUL2	Charcoal swab	All species	1-5 days. Up to 10 days for anaerobic	
Aerobic and Anaerobic Culture Additional Site	Aerobic and anaerobic bacterial cultures, yeasts culture, systemic and topical (where appropriate) antibiotic sensitivities	CU2+	Charcoal swab	All species	1-5 days. Up to 10 days for anaerobic	
Blood Culture	Aerobic and anaerobic bacterial cultures, systemic antibiotic sensitivities	BC&C	Culture media jar supplied upon request	All species	Up to 14 days	
Environmental Culture (qualitative)	Aerobic bacterial cultures	CULS	Charcoal swab / Contact plate	MRSA culture if Staphylococcus Aureus is identified	1 - 5 days	
Environmental Culture (quantitative)	Aerobic bacterial cultures	CULS	Contact plate	MRSA culture if Staphylococcus Aureus is identified	1 - 5 days	
Environmental Culture Extended	Aerobic bacterial cultures, Salmonella culture, Campylobacter culture	CUL+	Charcoal swab / contact plate		1 - 5 days	
Faecal Bacterial Pathogens	Aerobic bacterial cultures, Salmonella culture, Campylobacter culture	GE10	Fresh faeces	All species	1 - 5 days	
Milk examination	Aerobic and anaerobic bacterial culture, Salmonella culture	MILK	Milk	Cow. If antibiogram needed (+£21)	2 - 4 days	
Nocardia, Actinomyces culture		NAC	Swab		up to 2 weeks	
Urine Culture and Sensitivity	Aerobic bacterial culture and antibiotic sensitivities	CUL1	5 ml urine, Boric acid	Fill tube to the black arrow mark to avoid too high of a boric acid concentration	1 - 5 days	

## Dermatology

All tests include full reporting unless otherwise stated

Test	Includes	Code	Sample	Comment	Turnaround	
Dermatophytes Culture		FUNG	Skin scraping, Plucked hairs	May take 2 - 4 weeks for growth	Up to 4 weeks	
Dermatophytes PCR	PCR detection of <i>M. canis</i> , <i>M. gypseum</i> , <i>M. persicolor</i> , <i>T. mentagrophytes</i> , <i>T. equinum</i> , <i>Trichophyton</i> species of <i>Arthroderma benhamiae</i> , <i>Trichophyton equinum</i> , <i>Trichophyton verrucosum</i> , <i>Trichophyton erinacei</i>	DERP	Skin scraping, Plucked hairs	Species differentiation possible in positive cases (+£32)	3 - 5 days	
Demodex PCR	Semi-quantitative real-time PCR for <i>D. canis</i> , <i>D. injai</i> , <i>D. cornei</i> , <i>D. cati</i> , <i>D. gatoi</i> , <i>D. felis</i>	XDEM	Skin scraping		3 - 5 days	
Sarcoptes Antibody		SAR	Serum	Canine only	2 - 4 days	
Sarcoptes PCR	Real-time PCR for <i>Sarcoptes scabiei</i> var. <i>canis</i>	XSAR	Skin scraping		3 - 5 days	
Skin Microscopy (Scraping) / ear microscopy	Microscopy for parasites, fungal elements/spores, bacteria, yeast	DER1	Skin scraping, dry ear swab	Up to 4 slides from the same animal	Same day	
Skin Microscopy (Scraping) and Dermatophyte Culture	Microscopy for parasites, fungal elements/spores, bacteria, yeast and Dermatophyte culture	DER2	Skin scraping, plucked hairs, skin swab, ear swab		Same day, up to 4 weeks for Dermatophytes	
Skin Microscopy (Scraping) / ear microscopy, Fungal and Bacterial Culture	Microscopy for parasites, fungal elements/spores, bacteria and yeast, fungal and bacterial culture	DER3	Skin scraping, plucked hairs, skin swab, ear swab		Same day, 1-5 days for bacterial culture	
Skin Microscopy (Scraping) / ear microscopy, Fungal and Bacterial Culture with possible Canine Hypothyroidism	Microscopy for parasites, fungal elements/spores, bacteria and yeast, fungal and bacterial culture, T4 and TSH	DER4	Skin scraping, plucked hairs, swab and 1ml serum		Same day, 1-5 days for bacterial culture	

### NOTES

Please avoid submitting skin scrapings with oil, if possible. Charcoal swabs should be used for microbiology culture unless otherwise indicated. Culture results are accompanied by MALDI-TOF identification when appropriate or when specifically requested. Sensitivity panels are tailored according to species, site and organism isolated and are included in the cost of the culture test. If specific antibiotics are required, please indicate this clearly in the clinical information box. These will be performed, where possible. An extra charge will be applied.



## Immunology

All tests include full reporting unless otherwise stated

Test	Code	Sample	Comment	Turnaround	
Acetylcholine Receptor Antibody	ARA	1 - 2 ml Serum	To aid in the diagnosis of myasthenia gravis. Collect serum sample PRIOR to initiation of corticosteroid or other immunosuppressive therapy.	3 - 4 days	
Anti Nuclear Antibody Test (ANA)	ANA	1 - 2 ml Serum	To aid in the diagnosis of autoimmune disease (eg. SLE). Collect serum sample PRIOR to initiation of corticosteroid or other immunosuppressive therapy.	3 - 4 days	
Canine Coombs Test	COO1	EDTA	To confirm IMHA	Same day	
Equine Coombs test	COO1	EDTA	To confirm IMHA	2 - 4 days	
Feline Coombs Test	COO1	EDTA	To confirm IMHA. Testing performed at 37°C and 4°C	2 - 4 days	
IgA	IGA	Serum		3 - 4 days	
IgG	IGGC	Serum		3 - 4 days	
IgM	IGM	Serum		3 - 4 days	
Serum protein electrophoresis	SPE	Serum	Capillary electrophoresis	3 - 4 days	
Urine protein electrophoresis	UPE	Urine	Gel electrophoresis	3 - 4 days	
Muscle Fibre Antibody Type 2M	MASM	1 - 2 ml Serum	To aid in the diagnosis of masticatory muscle myositis. Collect serum sample PRIOR to initiation of corticosteroid or other immunosuppressive therapy.	2 - 3 weeks	
Rheumatoid Factor	RF	Serum	To aid in the diagnosis of immune-mediated disease (eg. rheumatoid arthritis). Collect serum sample PRIOR to initiation of corticosteroid or other immunosuppressive therapy.	3 - 4 days	

## Allergy testing at BattLab

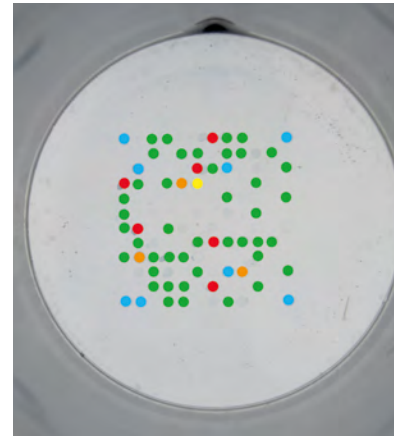
- In dogs, cats and horses, atopic dermatitis is known as an allergy to pollen, dust mites and/or moulds.
- Allergic patients have high concentrations of IgE directed against environmental or food allergens.
- When allergy is suspected, we recommend performing serology testing (ELISA Fcε-receptor test in dogs and cats, ELISA in horse) starting with **ALLERGY SCREENING PANEL** that includes pollen, mites, moulds, flea saliva.
- In case of **positive allergy screening panel**, we offer two further panels, based on the environment the patient lives in:
  - For indoor housing, we recommend **PERENNIAL ALLERGY PANEL**, which includes:

### Dog, Cat:

- ✓ Moulds: Alternaria alternata, Aspergillus fumigatus, Cladosporium herbarum, Penicillium notatum.
- ✓ Mites: Dermatophagoides farinae, Dermatophagoides pteronyssinus, Acarus siro, Tyrophagus putrescentiae.

### Horse:

- ✓ Moulds: Alternaria alternata, Aspergillus fumigatus, Aspergillus niger, Cladosporium sp., Epicoccum sp., Helminthosporium sativum, Penicillium sp., Fusarium spp., Ustilago sp., Rhizopus sp.
- ✓ Mites: Dermatophagoides farinae, Dermatophagoides pteronyssinus, Acarus siro, Tyrophagus putrescentiae, Glycophagus domesticus, Lepidoglyphus destructor.
- For outdoor housing, we recommend **SEASONAL ALLERGY PANEL**, which includes:



### Dog, Cat:

- ✓ Pollen: 6-grass mix (Orchard grass, Perennial ryegrass, Timothy grass, Meadow fescue, Kentucky blue grass, Velvet grass); Rye, Mugwort, Ragweed, English plantain, Nettle, Sheep sorrel, Birch, Hazel, Willow.

### Horse:

- ✓ Pollen: 6-grass mix (Orchard grass, Perennial ryegrass, Timothy grass, Meadow fescue, Kentucky blue grass, Velvet grass); Rye, Mugwort, Lamb's quarter/goosefoot, English plantain, Nettle, Sorrel, Dandelion, Rape, Ragweed, Hazel, Alder, Poplar, Birch, Beech, Willow.
- Seasonal allergens of dogs and cats can be affected by the presence of **anti-CCD IgE** (antibodies on carbohydrate side chains of plants) resulting into extremely positive results (positive to nearly every allergen). CCD reactivity can be identified with CHO test, that identifies IgE to the CCD determinant. When the **CHO test** is positive, an inhibitor is used to block the CCD reaction, and this eliminates false positive reactions.

## Allergy - Canine / Feline

All tests include full reporting unless otherwise stated

Test	Includes	Code	Sample	Comment	Turnaround	
Screening Test	Mites, Pollens, Moulds, Flea	ALLB	3 ml Serum	Including CHO test and blocking as needed.	3 - 5 days	
Seasonal (Outdoor) Panel	Grasses, Weeds, Tree pollen	ALLS	1 ml Serum	Including CHO test and blocking as needed.	3 - 5 days	
Perennial (Indoor) Panel	Moulds, Mites	ALLP	1 ml Serum		3 - 5 days	
Pruritus Profile (dog)	Screening test + Sarcoptes IgG	PRPR	3 ml Serum		3 - 5 days	
Pruritus Profile (dog) - Large	Seasonal and Perennial Panel, Food Allergens Basic, Food Allergens Extended, Sarcoptes IgG, Flea saliva	PRPL	3 ml Serum		~1 week	
<b>NEW!</b> Nordic Allergy Profile	Flea saliva, Malassezia, pollen from northern grasses, weeds and trees, moulds and mites	NAPR	3ml Serum	Including CHO test and blocking as needed.	~1 week	
Feathers/Hairs/Epithelia	Cat, Dog, Rabbit, Guinea pig, Parrot, Feather mix	AFHE	1 ml Serum		~1 week	
Insect Panel	Deerfly, gnat, mosquito, horse fly, stable fly, cockroach	AINS	1 ml Serum		~1 week	
Mediterranean Panel	Grasses, Weeds, Tree pollen, Moulds, Mites	AMED	1 ml Serum		~1 week	
Hymenoptera Panel	Bee, Wasp, Hornet, Paperwasp	AHYM	1 ml Serum	Including CHO test and blocking as needed.	up to 2 weeks	
Flea Saliva IgE		FLEA	> 0.5 ml Serum		3 - 5 days	
Malassezia IgE		ALLM	> 0.5 ml Serum		~1 week	
Staphylococcus IgG		ALST	> 0.5 ml Serum		3 - 5 days	
Sarcoptes IgG		SAR	> 0.5 ml Serum	Canine only	3 - 5 days	
Food Allergens (dog)	IgE and IgG against commonly used food ingredients	CFAT	1 ml Serum		3 - 5 days	
Food Allergens Extended (dog)	IgE and IgG against Horse, Ostrich, Kangaroo, Wild boar, Reindeer, Amaranth, Parsnip and Millet	ACFE	1 ml Serum		Up to 10 days	
Food Allergens (cat)	IgE and IgG against commonly used food ingredients	FFAT	1 ml Serum		3 - 5 days	
Food Allegens Extended (cat)	IgE and IgG against horse, ostrich, red deer, rabbit, wild boar, reindeer, amaranth, millet	AFFE	1 ml Serum		~1 week	
Food Allergens Exotics (dog, cat)	IgE and IgG against trout, goat, camel, buffalo, quail, hermetia/ insect, sweet potato, sunchocke, buckwheat, bean, carrot, pumpkin, zucchini, pea, yeast	FAEX	1 ml Serum		Up to 10 days	
Gluten Sensitivity		GLUS	1 ml Serum	Canine only	up to 2 weeks	

## Allergy - Equine

All tests include full reporting unless otherwise stated

Test	Includes	Code	Sample	Turnaround	
Screening Test	Mites, Pollens, Moulds, Flea	EALB	3 ml Serum	3 - 5 days	
Seasonal (Outdoor) Panel	Grasses, Weeds, Tree pollen	EALS	1 ml Serum	3 - 5 days	
Perennial (Indoor) Panel	Moulds, Mites	EALP	1 ml Serum	3 - 5 days	
Feathers/Hairs/Epithelia	Cat, Dog, Rabbit, Guinea pig, Parrot, Feather mix	EFHE	1 ml Serum	Up to 10 days	
Insect Panel	Simulium, Culex, Tabanus, Musca, Culicoides	EINS	1 ml Serum	~1 week	
Equine Food Allergies	IgE and IgG against wheat, barley, oats, corn, molasses, soy, yeast and alfalfa	EFAE	1 ml Serum	Up to 10 days	

## Allergy - Allergen-Specific Immunotherapy - Subcutaneous

All tests include full reporting unless otherwise stated

Test	Includes	Code	Comment	Turnaround	
Immunotherapy 1 - 4 allergens	injectable hyposensitization - see package insert information	ALV1	Written prescription and import certificate available from the VMD website needed to order immunotherapy.	~2 weeks	
Immunotherapy 5 - 8 allergens	injectable hyposensitization - see package insert information	ALV2	Written prescription and import certificate available from the VMD website needed to order immunotherapy.	~2 weeks	
Immunotherapy > 8 allergens	injectable hyposensitization - see package insert information	ALV3	Written prescription and import certificate available from the VMD website needed to order immunotherapy.	~2 weeks	

## Parentage/Genetic Diseases

Tests below are commonly requested tests for genetic disease but many more are available. Please contact the laboratory if you do not see what you are looking for.

Sample material: 0.5 - 1 ml EDTA-blood, buccal swabs\*

For breed identification testing contact the laboratory prior sampling as a special buccal swab is required.

Species	Code	DNA test	Breed	
Dog/cat	ID	DNA profiling - to provide a unique identifier for your dog	All	
Dog/cat	PAR	Parentage - to clarify whether supposed parents of a given animal are the true biological parents	All	
Dog	8038	Acral mutilation syndrome (AMS)	Cockapoo, English Cocker Spaniel, English Pointer, English Springer Spaniel, French Spaniel, German Shortair Pointer	
Dog	CN	Cystinuria	Newfoundland, Landseer, Labrador	
Dog	CDMM	Degenerative myelopathy (exon 2)	All breeds	
Dog	EIC	Exercise induced collapse (EIC)	Labrador Retriever, Cocker Spaniel and others	
Dog	EF	Episodic Falling	Cavalier King Charles Spaniel	
Dog	FN	Familial nephropathy (FN)	English Cocker Spaniel	
Dog	FN1	Familial nephropathy (FN)	English Springer Spaniel, Samoyed	
Dog	FUC	Fucosidosis	English Springer Spaniel	
Dog	8576	Hereditary cataract (HSF4)	Boston Terrier, French Bulldog, Staffordshire Bull Terrier	
Dog	8154	Hyperuricosuria (SLC)	All breeds	
Dog	8475	Imerslund-Gräsbeck syndrome (IGS) - cobalamin malabsorption	Beagle, Border Collie, Komondor	
Dog	8125	L-2-hydroxyglutaric aciduria (L2HGA)	Staffordshire Bull Terrier, Yorkshire Terrier	
Dog	8005	Lafora disease	Basset Hound, Beagle, Chihuahua, Dachshund, French Bulldog For this test EDTA sample only	
Dog	MDR1	MDR1 gene defect (ivermectin sensitivity)	Border Collie, Rough Collie and others	
Dog	MC	Myotonia congenita	Miniature Schnauzer	
Dog	PRA	Progressive retinal atrophy - please contact the laboratory as several genetic tests are available for this disease and these may vary depending on the breed		

## Parentage/Genetic Diseases

Tests below are commonly requested tests for genetic disease but many more are available. Please contact the laboratory if you do not see what you are looking for.

Sample material: 0.5 - 1 ml EDTA-blood, buccal swabs\*

For breed identification testing contact the laboratory prior sampling as a special buccal swab is required.

Species	Code	DNA test	Breed	
Cat	4FCP	Combination genetic diseases cat: HCM, HCR, GSD4, PKD, PRA, PK-Def., SMA genetic blood determination	All breeds	
Cat	HCM	Hypertrophic cardiomyopathy (HCM1)	Maine Coon	
Cat	8116	Hyperthrophic cardiomyopathy (HCM3)	Ragdoll	
Cat	8453	Hypokalemia	Australian Mist, Burmese, Cornish Rex, Devon Rex, Singapura, Sphynx, Tonkinese	
Cat	PKD	Feline Polycystic Kidney Disease	All breeds	
Cat	8047	Pyruvate kinase deficiency	Abyssinian, Bengal , Domestic Longhair, Domestic Shorthair, Egyptian Mau, La Perm, Maine Coon, Norwegian Forest Cat, Ocicat, Savannah, Siberian, Singapura, Somali	
Horse		Coat colour / coat structure	All breeds	
Horse	8458	Dwarfism	Miniature Horse, Shetland Pony	
Horse	8160	Equine malignant hyperthermia (EMH)	All breed	
Horse	8464	Hoof wall separation disease (HWSD)	Connemara Pony	
Horse	PSSM	Polysaccharide storage myopathy type 1	All breeds	
Large animals		Please contact the laboratory for more details		

\* contact BattLab for suitability, supply and use of cheek brushes



## Index

### A

Abortion PCR Profile camelid (PCR).....	46
Abortion Profile bovine (PCR).....	46
Abortion Profile Camelid (PCR).....	46
Abortion Profile equine (PCR).....	46
Abortion Profile small ruminant (PCR).....	46
Acetylcholine Receptor Antibody.....	53
Acral mutilation syndrome.....	57
ACTH Endogenous.....	23
ACTH Stimulation Test.....	23
Actinobacillus pleuropneumoniae antibodies.....	33
Actinobacillus pleuropneumoniae (PCR).....	40
Activated Partial Thromboplastin Time.....	17
Activated Partial Thromboplastin Time and Prothrombin Time.....	16
Add-on.....	9
Adenovirus 1 canine - PCR.....	36
Adenovirus 2 canine - PCR.....	36
Adenovirus antibodies (small mammals).....	34
Adenovirus (bird, guinea pig, reptiles) - PCR.....	41, 43
Adenovirus (CAV) antibodies canine.....	30
Adenovirus (guinea pig) - PCR.....	42
Adrenal profile canine.....	24
Aelurostrongylus abstrusus.....	36
Aerobic and Anaerobic Culture.....	51
Aerobic Culture.....	51
Aldosterone.....	24
Aldosterone Test, dynamic.....	24
Allergy - Allergen-Specific Immunotherapy - Subcutaneous.....	56
Allergy - Canine / Feline.....	55
Allergy - Equine.....	56
Alpha-1-Antitrypsin.....	14
Alpha 1 glycoprotein.....	17
Alpha-Chloralose.....	20
Alpha fetoprotein (AFP).....	18
Alpha-hydroxybutyrate dehydrogenase ( $\alpha$ HBDH).....	18
Amiodarone.....	20
Amphibian Profile (PCR).....	48
Anaemia Profile canine (PCR).....	44
Anaemia Profile equine (PCR).....	45
Anaplasma ovis / Mycoplasma ovis.....	40
Anaplasma phagocytophilum antibodies.....	30, 32, 33

Anaplasma phagocytophilum (PCR).....	36, 39, 40
Anaplasma platys (PCR).....	36
Angiostrongylus vasorum (Lungworm) antigens.....	30
Angiostrongylus vasorum (PCR).....	36
Anoplocephala perfoliata antibodies.....	32
Anti-coagulant panel.....	20
Anti-Mullerian Hormone.....	25
Anti Nuclear Antibody Test.....	53
Antiphlogistics profile.....	21
Aquatic Turtle Profile (PCR).....	48
Arenavirus / Inclusion Body Disease (PCR).....	43
Aspergillus antibodies.....	30, 33, 34
Aspergillus Galactomannan antigens.....	34
Aspergillus species.....	36
Aujeszky disease (Pseudorabies) antibodies farm animals.....	33
Aujeszky virus (Pseudorabies) antibodies canine, feline.....	30
Avian 1 profile.....	9
Avian 1 profile (PCR).....	47
Avian 2 profile.....	9
Avian 2 profile (PCR).....	47
Avian 3 profile (PCR).....	47
Avian 4 profile (PCR).....	47
Avian 5 profile (PCR).....	47
Avian 6 profile (PCR).....	47
Avian Haemosporidia (Avian Malaria).....	41

### B

Babesia antibodies, canine/feline.....	30
Babesia antibodies (Compliment Fixation), equine.....	32
Babesia antibodies (ELISA), equine.....	32
Babesia antibodies (IFAT), equine.....	32
Babesia antigen (microscopic).....	33
Babesia species (PCR).....	36, 39, 40
Baermann Lungworm Detection.....	13, 15
Bartonella henselae antibodies.....	30
Bartonella henselae (PCR).....	36
Batrachochytrium dendrobatidis (PCR).....	43
Batrachochytrium salamandivorans (PCR).....	43
Beta hydroxybutyrate.....	18
Bile acids, blood.....	18
Bile acids (choleogenic diarrhoea).....	14
Bile acids stimulation test.....	18
Blood count, avian.....	16
Blood count, complete.....	16

Blood count, reptile.....	16
Blood Culture.....	51
Blood Smear Examination.....	16
Blood Typing canine.....	16
Blood Typing feline.....	16
Blue Tongue virus.....	40
Bone marrow cytology.....	29
Bordetella bronchiseptica (PCR).....	36, 40, 42
Bornavirus antibodies.....	30, 32, 33, 34
Bornavirus (PCR).....	36, 39, 40, 41
Borrelia antibodies (IgM + IgG).....	30, 32, 33
Borrelia antibodies (Western blot).....	30, 32
Borrelia species (PCR).....	36, 39, 40
Bovine pregnancy-associated glycoproteins.....	26
Brachyspira pilosicoli / hyodysenteriae.....	40
BRAF mutation.....	22, 29
Brain Natriuretic Peptide.....	18
Bromide.....	20
Brucella antibodies.....	33
Brucella canis antibodies.....	30
Brucella canis (PCR).....	36
Burkholderia mallei antibodies.....	32
BVD Virus antibodies.....	33

### C

Cadmium.....	18, 21
Calculus Analysis.....	22
Calicivirus (FCV) antibodies canine.....	30
Calicivirus feline.....	37
Calprotectin.....	14
Campylobacter jejuni.....	36
Canine1 profile.....	7
Canine 2 profile.....	7
Canine 3 profile.....	7
Canine 4 profile.....	7
Canine 5 profile.....	7
Canine 6 profile.....	7
Caprine Arthritis Encephalitis Virus antibodies.....	33
Carp Edema Virus.....	43
Chlamydia antibodies.....	30, 33, 34
Chlamydia species (PCR).....	36, 40, 41, 42, 43
Cholesterol (HDL).....	18
Cholesterol (LDL).....	18
Cholinesterase.....	18
Chronic Bee Paralysis Virus.....	44
Circovirus 2 porcine (PCR).....	41

Circovirus canine (PCR).....	36
Circovirus (PBFD virus).....	41
Circovirus (pigeon).....	41
Clinical Chemistry.....	17, 18, 19
Clostridium difficile Toxin A and B.....	13, 30
Clostridium perfringens Enterotoxin.....	13, 30
Coagulation.....	16, 17
Coagulation factors.....	17
Coagulation Screen.....	16
Coat colour / coat structure.....	58
Cobalt.....	18, 21
Colchicine.....	20
Combined Aldosterone and Renin.....	24
Convulsant panel.....	20
Coombs Test canine.....	16, 53
Coombs Test equine.....	16, 53
Coombs Test feline.....	16, 53
Copper.....	18
Coronavirus antibody (FeCoV) - FIP feline.....	30
Coronavirus bovine (PCR).....	40
Coronavirus canine (PCR).....	36
Coronavirus dog, cat enteric (PCR).....	14
Coronavirus (enteric+systemic) (PCR).....	42
Coronavirus equine (PCR).....	39
Coronavirus feline.....	37
Coronavirus feline quantitative.....	38
Coronavirus porcine (PCR).....	41
Coronavirus (respiratory) canine.....	36
Cortisol.....	20, 23
Corynebacterium pseudotuberculosis antibodies..	33
Coxiella burnetii antibodies.....	33
Coxiella burnetii (PCR).....	40
C reactive protein.....	18
Crenosoma vulpis.....	37
Cryptococcus antigens.....	30
Cryptosporidium antigens.....	13, 30, 35
Cryptosporidium (PCR).....	14, 37, 40, 42, 43
Cyclosporin.....	20
Cystatin C.....	22
Cystinuria.....	57
Cytauxzoon incl. species diff. ....	37
Cytology.....	28, 29
Cytomegalovirus antibodies.....	34

## D

D-dimers.....	17
Deformed Wing Virus (DWV).....	44

Degenerative myelopathy.....	57
Demodex (PCR).....	37, 52
Dermatology.....	52
Dermatophilus Congolensis.....	39, 40
Dermatophytes Culture.....	52
Dermatophytes (PCR).....	37, 39, 40, 42, 52
Devriesea agamarum.....	43
Dexamethasone Suppression Test.....	24
Diabetes mellitus check.....	8
Diarrhoea Profile canine (PCR).....	44
Diarrhoea Profile feline (PCR).....	45
Diarrhoea Profile juvenile canine/feline.....	13
DIC profile.....	17
Digoxin.....	20
Dirofilaria antigen.....	34
Dirofilaria immitis antigens.....	30
Distemper (CDV) antibodies canine.....	30
Distemper (PCR) quantitative.....	42
Distemper virus antibodies, small mammals.....	34
Distemper virus canine (PCR).....	36, 38, 42
Doping profile.....	21
Downer cow Profile.....	11
Drugs of abuse.....	20
Dwarfism.....	58
Dynamic 17-Hydroxyprogesterone Test (SHAP).....	24
Dysbiosis Analysis.....	14, 15
Dysbiosis Profile (cat).....	14
Dysbiosis Profile (dog).....	14

## E

Echinococcus antibodies.....	30
Echinococcus (PCR).....	37
Ehrlichia canis antibody.....	30
Ehrlichia canis (PCR).....	37
Encephalitozoon cuniculi antibodies (IgG+IgM).....	30
Encephalitozoon cuniculi antibody (IgG).....	30, 34
Encephalitozoon cuniculi antibody (IgG+IgM).....	35
Encephalitozoon cuniculi (PCR).....	42
Encephalitozoon pagonae.....	43
Endocrinology - Adrenal/Pituitary.....	23, 24
Endocrinology - Other.....	26
Endocrinology - Reproduction.....	25, 26
Endocrinology - Thyroid.....	22
Endoparasite profile, equine.....	15
Endoparasites.....	13, 15
Endoparasites and Giardia antigen.....	13

Entamoeba invadens.....	43
Entamoeba spp.....	43
Environmental Culture.....	51
Environmental Culture Extended.....	51
Episodic Falling.....	57
Equine Infectious Anemia antibodies (Coggins).....	32
Equine Infectious Anemia antibodies (ELISA).....	32
Equine Metabolic Syndrome (EMS) Profile.....	10
Ethylene glycol.....	20
European Brown Hare Syndrome Virus (PCR).....	42
Exercise induced collapse.....	57
Extensive toxicology screen.....	20
Eye Profile canine (PCR).....	44
Eye Profile equine (PCR).....	45
Eye Profile feline (PCR).....	45

## F

Faecal Bacterial Pathogens.....	15, 51
Faecal egg count.....	14, 15
Faecal Profile bovine.....	15
Faecal Profile large.....	15
Faecal Profile - Large, calf.....	15
Faecal Profile piglet.....	15
Faecal Profile porcine.....	15
Faecal Profile - Small, calf.....	15
Faecal profile small, equine.....	15
Familial nephropathy.....	57
Farm Animal Profiles.....	11
Fasciola hepatica antibodies.....	33
Feathers/Hairs/Epithelia.....	55, 56
Feline 1 profile.....	7
Feline 2 profile.....	7
Feline 3 profile.....	7
Feline 4 profile.....	7
Feline 5 profile.....	8
Feline 6 profile.....	8
Feline 7 profile.....	8
Feline inflammatory profile.....	8
Feline Travel Profile (Northern/Central Europe).....	49
FeLV antigen and FIV antibodies (ELISA).....	31
FeLV antigen - ELISA.....	31
FeLV, FIV & FeCoV.....	31
FELV (IFAT).....	31
FeLV provirus.....	37
Ferret Adrenal Profile.....	24
Ferret coronavirus serology.....	35

Ferret Screening Profile.....	9
Fertility Profile.....	11
FGF23.....	18, 22
Fibrinogen.....	17
FIV antibodies (ELISA).....	31
FIV antibodies (Western blot).....	31
FIV (IFAT).....	31
FIV provirus.....	37, 38
Flea Profile feline (PCR).....	45
Flea Saliva IgE.....	55
Flow cytometry.....	29
Foal Diarrhoea profile.....	46
Foal Faecal Profile.....	15
Foal profile.....	10
Folate / Folic acid.....	13, 18
Food Allergens (cat).....	55
Food Allergens (dog).....	55
Food Allergens Exotics.....	55
Food Allergens Extended (cat).....	55
Food Allergens Extended (dog).....	55
Food Allergies equine.....	56
Fractional excretion.....	22
Francisella tularensis (PCR).....	42
Free fatty acids.....	18
Free T4 by equilibrium dialysis.....	22
Fructosamine.....	9, 18

## G

Gastro 1 profile.....	12
Gastro 2 profile.....	12
Gastro 3 profile.....	12
Gastro 4 profile.....	12
Gastro 5 profile.....	12
Gastro 6 profile.....	12
Gastro 7 profile.....	12
Gastro 8 profile.....	12
Gastro 9 profile.....	12
Gastro 10 profile.....	12
Gastro 11 profile.....	12
Gastro 12 profile.....	12
Gastro 13 profile.....	12
Gastro 18.....	12
Gastroenterology - Canine/Feline.....	12, 13, 14
Gastroenterology - Equine.....	15
Gastroenterology - Farm Animal.....	15
Genetic diseases cat, combination.....	58

Giardia antigens.....	13, 31
Giardia species PCR.....	14, 37, 42
GLDH.....	18
Glutathione peroxidase.....	18
Gluten Sensitivity.....	55

## H

Haematology.....	16
Haemorrhagic Disease rabbit (PCR).....	42
Hantavirus antibodies.....	35
Haptoglobin.....	18
Health Screen, equine.....	10
Health Screen, small animals.....	8
Heavy Metal Toxicity Screen - drug monitoring.....	20
Heavy Metal Toxicity Screening, farm animals.....	11
Hedgehog Profile.....	9
Helicobacter species (PCR).....	37, 42
Hepatozoon canis/felis (PCR).....	37
Hereditary cataract.....	57
Herpes (CHV) antibody canine.....	30
Herpesvirus 1 and 4 equine antibodies.....	32
Herpesvirus 1 bovine.....	40
Herpesvirus 1 equine (PCR).....	39
Herpesvirus 1 (IBR) antibodies bovine.....	33
Herpesvirus 1 (IBR) gB bovine.....	33
Herpesvirus 1 (IBR) gE bovine.....	33
Herpesvirus 2 equine (PCR).....	39
Herpesvirus 3 equine (PCR).....	39
Herpesvirus 4 equine (PCR).....	39
Herpesvirus 5 equine (PCR).....	39
Herpesvirus canine (PCR).....	36
Herpesviruses (Pacheco's disease) (PCR) bird.....	41
Herpesvirus feline (PCR).....	37
Herpesvirus (FHV) antibodies feline.....	31
Herpesvirus (Pacheco's Disease) antibodies, bird.....	34
Herpesvirus (PCR) reptiles, frog, toad, koi carp.....	43
Herpesvirus (TeHV-1 and TeHV-3) antibodies, tortoise.....	35
High Dose Dexamethasone Suppression Test.....	24
Histopathology.....	29
Histophilus somni (PCR).....	40
Hoof wall separation disease.....	58
Hymenoptera Panel.....	55
Hyperthrophic cardiomyopathy (HCM3).....	58
Hypertrophic cardiomyopathy.....	58
Hyperuricosuria.....	57
Hypokalemia.....	58

## I

Imerslund-Gräsbeck syndrome.....	57
Immunoglobulin IgA.....	53
Immunoglobulin IgG.....	53
Immunoglobulin IgM.....	53
Immunohistochemistry.....	29
Immunology.....	53
Immunotherapy 1 - 4 allergens.....	56
Immunotherapy 5 - 8 allergens.....	56
Immunotherapy > 8 allergens.....	56
Indoxyl sulphate.....	22
Infectious Disease - Antigen / Antibody Testing	
Canine/Feline.....	30, 31
Infectious Disease - Avian.....	34
Infectious Disease - Equine.....	32
Infectious Disease - Farm Animal.....	33, 34
Infectious Disease - PCR Avian.....	41
Infectious Disease - PCR Canine/Feline.....	36, 37, 38
Infectious Disease - PCR Equine.....	39
Infectious Disease - PCR Farm Animal.....	40
Infectious Disease - PCR Reptiles.....	43, 44
Infectious Disease - PCR Small Mammals.....	42
Infectious Disease - Reptiles.....	35
Infectious Disease - Small Mammals.....	34
Inflammatory profile canine.....	7
Influenza A Virus.....	37, 39, 40, 42
Influenza A Virus antibodies.....	32
Insect Panel.....	55, 56
Insulin.....	26
Insulin antibodies.....	26
Insulin-like Growth Factor.....	26
Intranuclear Coccidians (TINC).....	43
Ionised calcium.....	18
Iridovirus (PCR).....	43
Iron.....	19

## K

Ketosis Profile.....	11
Kidney profile.....	8
Koi Carp Profile (PCR).....	48

## L

L-2-hydroxyglutaric aciduria.....	57
Lafora disease.....	57
Lawsonia intracellularis (PCR).....	39, 40, 42



LDH.....	19
Lead.....	19, 21
Leishmania antibodies (ELISA).....	31
Leishmania antibodies (IFAT).....	31
Leishmania (PCR), qualitative.....	37
Leishmania Profile.....	49
Leishmania species (PCR), quantitative.....	38
Leptospira antibodies.....	31, 32, 33
Leptospira species (PCR).....	38, 39, 40, 42
Levetiracetam.....	20
Listeria antibodies.....	31, 32, 33
Listeria monocytogenes (PCR).....	40
Liver and Kidney Screen, small.....	8
Liver profile.....	8
Llama/Alpaca Profile.....	11
Low Dose Dexamethasone Suppression Test.....	23
Lungworm feline (PCR).....	45
Lungworm Profile - canine (PCR).....	44
Lymphocytic Choriomeningitis Virus antibodies.....	35

## M

Maedi-Visna antibodies.....	33
Magnesium.....	19
Malassezia IgE.....	55
Manganese.....	19
Mannheimia haemolytica (PCR).....	40
Mastitis PCR Profile (PCR).....	46
MDR1 gene defect.....	57
Mediterranean Panel.....	55
Melissococcus plutonius (EFB) (PCR).....	44
Metabolic Syndrome Profile equine.....	24
Metaldehyde, Strychnine, Methiocarb.....	21
Methylxanthines (caffeine, theobromine).....	20
Microalbumin.....	21
Microbiology.....	50, 51
Microfilaria (Knott Tests).....	31
Microfilaria species (PCR).....	38, 42
Microfilaris (PCR), quantitative.....	38
Microscopical Nutritive Digestion.....	14
Milk examination.....	51
Mineral Profile 1 farm animals.....	11
Mineral Profile 2 farm animals.....	11
Mineral profile equine.....	10
Morbillivirus feline.....	37
Muscle Fibre Antibody Type 2M.....	53
Muscular Screening.....	11



Mycobacterium paratuberculosis (PCR) .....	40
Mycoplasma bovis (PCR) .....	40
Mycoplasma gallisepticum / synoviae (PCR) .....	41
Mycoplasma haemolamiae (PCR) .....	40
Mycoplasma (haemotropic) cat (PCR) .....	38
Mycoplasma (haemotropic) dog (PCR) .....	38
Mycoplasma hyopneumoniae antibodies .....	33
Mycoplasma hyopneumoniae (PCR) .....	41
Mycoplasma pulmonis (PCR) .....	42
Mycoplasma (respiratory/mucous membranes) cat (PCR) .....	38
Mycoplasma (respiratory/mucous membranes) dog (PCR) .....	38
Mycoplasma species tortoise, turtles, snakes (PCR) .....	43
Mycoplasma suis (PCR) .....	41
Mycotoxin panel .....	20
Myotonia congenita .....	57
Myxomavirus antibodies .....	35
Myxomavirus (PCR) .....	42

## N

Neoehrlichia mikurensis (PCR) .....	36
Neospora caninum antibodies (IgM, IgG) .....	31, 33
Neospora caninum (PCR) .....	38, 41
Neurological/Respiratory Profile (Pythons) .....	48
Neurological/Respiratory Profiles (Boas) .....	48
Neurology Profile feline (PCR) .....	45
Neurology Profile - Large, canine (PCR) .....	44
Neurology Profile - Small, canine (PCR) .....	44
Nidoviruses (PCR) .....	43
Nocardia, Actinomyces culture .....	51
Nordic Allergy Profile .....	55
Nosemosis (microscopical) .....	44
Nu.Q® .....	19

## O

Occult blood test .....	13
Oestradiol .....	25
Oestradiol Test, dynamic .....	25
Oestrone Sulphate .....	25
Ophidiomyces ophiodiicola (PCR) .....	43
Orthopoxvirus, canine/feline (PCR) .....	38
Orthopoxvirus rabbit, guinea pig, rat, mouse (PCR) .....	42
Ostertagia ostertagi antibodies .....	33

## P

Paenibacillus larvae .....	44
Pancreas elastase .....	13
Pancreatic Specific Lipase .....	19
Pancreatitis Profile .....	8
Panleukopaenia (FPV) antibody feline .....	31
Panleukopaenia (FPV) antigens feline .....	31
Papillomavirus canine/feline (PCR) .....	38
Papillomavirus (PCR) bovine .....	39
Parainfluenza Virus 3 bovine .....	40
Parainfluenza Virus canine (PCR) .....	36
Paramyxovirus aPMV-1 antibodies (Newcastle Disease) .....	34
Paramyxovirus (aPMV-1) (PCR) .....	41
Paramyxoviruses/Ferlaviruses (PCR) .....	43
Paramyxovirus/Ferlavirus antibody .....	35
Parathyroid Hormone .....	27
Parathyroid Hormone Related Peptide (PTHrp) .....	27
Paratuberculosis antibodies .....	33
Parentage .....	57
Parentage/Genetic Diseases .....	57, 58
PARR .....	29
Parvovirus (Aleutian mink disease) .....	42
Parvovirus antigen .....	13
Parvovirus canine (PCR) .....	36, 38
Parvovirus (CPV) antibodies canine .....	30
Parvovirus (CPV) antigen canine .....	30
Parvovirus (CPV/FPV) PCR .....	14
Parvovirus (EqPV-H) equine (PCR) .....	39
Parvovirus feline (PCR) .....	37
Parvovirus porcine (PCR) .....	41
Parvovirus (SMEDI) antibodies .....	34
Pasteurella multocida (PCR) .....	41, 42
PCR Profiles - Avian .....	47
PCR Profiles - Canine .....	44
PCR Profiles - Feline .....	45
PCR Profiles - Rabbit .....	47
PCR Profiles - Reptiles / Amphibians .....	48
PCR Profiles - Tick-Borne Disease .....	46
Perennial (Indoor) Panel .....	55, 56
Performance profile, equine .....	10
Performance profile, ruminant .....	11
Phenobarbital .....	20
Phenobarbital Peak and Trough samples .....	20
Picornavirus antibodies .....	35
Picornavirus (virus X) (PCR) .....	43

PLI .....	9, 12
Polycystic Kidney Disease feline .....	58
Polyoma Virus (PCR) .....	41
Polysaccharide storage myopathy type 1 .....	58
Pox (Avipox virus) (PCR) .....	41
PPID Profile equine .....	10, 24
Pregnant Mare Serum Gonadotrophin .....	25
Pre surgery profile .....	8
Profile porcine .....	11
Profiles equine .....	10
Progesterone .....	25
Progesterone Test, dynamic .....	25
Progressive retinal atrophy .....	57
Prostate specific esterase canine .....	18
Prothrombin Time .....	17
Pruritus Profile .....	55
Pruritus Profile - Large .....	55
Psittacine Circovirus (PCR) .....	41
Pyruvate kinase deficiency .....	58

## Q

Quarantine Profile reptiles, amphibians (PCR) .....	48
-----------------------------------------------------	----

## R

Rabbit/Small Mammal 1 .....	9
Rabbit/Small Mammal 2 .....	9
Rabies antibodies .....	31
Ranavirus (PCR) .....	43
Reovirus (PCR) .....	41, 43
Reproduction PCR Profile porcine (PCR) .....	46
Reproduction Profile canine (PCR) .....	44
Reproduction Profile feline (PCR) .....	45
Reproductive and Respiratory Syndrome Virus antibodies, porcine .....	34
Reproductive and Respiratory Syndrome Virus porcine (PCR) .....	41
Reptile 1 profile .....	9
Reptile 2 profile .....	9
Respiratory Profile 1 bovine (PCR) .....	46
Respiratory Profile 1 canine (PCR) .....	44
Respiratory Profile 1 equine (PCR) .....	45
Respiratory Profile 1 feline (PCR) .....	45
Respiratory Profile 2 bovine (PCR) .....	46
Respiratory Profile 2 canine (PCR) .....	44
Respiratory Profile 2 equine (PCR) .....	45
Respiratory Profile 2 feline (PCR) .....	45

Respiratory Profile 3 canine (PCR) .....	44
Respiratory Profile 3 feline (PCR) .....	45
Respiratory Profile 4 feline (PCR) .....	45
Respiratory Profile Ferret (PCR) .....	47
Respiratory Profile - Foal equine (PCR) .....	45
Respiratory Profile - Large equine (PCR) .....	45
Respiratory Profile porcine (PCR) .....	46
Respiratory Profile Rabbit (PCR) .....	47
Respiratory Profile Rat/Mouse .....	47
Respiratory Profile Turtle/Tortoise - Large (PCR) .....	48
Respiratory Profile Turtle/Tortoise - Small (PCR) .....	48
Respiratory Syncytial Virus bovine (PCR) .....	40
Rheumatoid Factor .....	53
Rhodococcus equi (PCR) .....	39
Rickettsia conorii antibodies .....	31
Rickettsia (PCR) .....	38
Rickettsia rickettsii antibody .....	31
Rotavirus antigens .....	13, 31, 32
Rustrela virus (PCR) .....	38

## S

Sacbrood virus (PCR) .....	44
Salivary Cortisol .....	27
Salivary Cortisol Stimulation Test .....	27
Salmonella abortus equi antibodies .....	32
Salmonella antibodies .....	31, 32
Salmonella species (PCR) .....	14, 38, 39, 41, 42, 43
Sarcoptes antibody canine .....	31, 52, 55
Sarcoptes PCR .....	52
Sarcoptes scabiei var. canis (PCR) .....	38, 42
SARS-CoV-2 .....	38
Screening Profile large, equine .....	10
Screening Profile large, farm animals .....	11
Screening Test Allergy .....	55, 56
SDMA .....	9, 19, 22
Seasonal (Outdoor) Panel .....	55, 56
Secretory IgA .....	14
Sedative profile .....	21
Selenium .....	19
Sendai Virus antibodies .....	35
Senior profile equine .....	10
Serum Amyloid A .....	19
Serum electrolytes 1 .....	19
Serum electrolytes 2 .....	19
Serum iron and Total Iron Binding Capacity .....	16
Serum protein electrophoresis .....	53

Skin Microscopy / ear microscopy.....	52
Skin Microscopy / ear microscopy and Dermatophyte Culture.....	52
Skin Microscopy / ear microscopy, Fungal and Bacterial Culture.....	52
Skin Microscopy / ear microscopy, Fungal and Bacterial Culture with possible Canine Hypothyroidism.....	52
Skin Profile Lizard (PCR) .....	48
Small Animal Profiles.....	7, 8
Small Mammal, Avian and Reptile Profiles .....	9
Staphylococcus IgG .....	55
Streptococcus equi antibody.....	32
Streptococcus equi equi (Strangles).....	39
Streptococcus equi equi / zoonotic (PCR).....	39
Sunshinevirus .....	43
<b>T</b>	
T4 .....	22
T4 + TSH.....	22
T4 + Urea + Creatinine.....	22
T4AA, T3AA, TGAA - autoantibodies .....	22
T4, fT4, T3, fT3, TSH.....	23
T4, fT4, T3, fT3, TSH, T4AA, T3AA, TGAA.....	23
Taurine.....	19
Taylorella equigenitalis (PCR) .....	39
Testosterone .....	25
Testosterone Test, dynamic.....	26
Tetanus (Clostridium) antibodies.....	31, 32
TGAA - thyroglobulin autoantibodies .....	23
Thallium .....	19, 21
Therapeutic Drug Monitoring and Toxicology Tests.....	20
Thymidine kinase .....	19
Tick Borne Disease (PCR).....	46
Tick-borne encephalitis antibodies (IgG) .....	31, 32
Tick-borne encephalitis antibodies (IgM) .....	31, 32
Tick-borne Encephalitis Virus (PCR) .....	38, 39
TLI canine.....	19
TLI feline.....	19
Toxoplasma antibodies (IgG, IgM) .....	31, 34
Toxoplasma gondii antibodies.....	35
Toxoplasma gondii (PCR) .....	38, 41, 42
Travel Profile - Acute canine .....	49
Travel Profile - Acute, feline.....	49
Travel Profile, canine (Eastern Europe).....	49

Travel Profile, canine (Northern/Central Europe)....	49
Travel Profile, canine (Southern Europe).....	49
Travel Profile, canine (USA).....	49
Travel Profiles .....	49
Travel Profile (South/Eastern Europe), feline .....	49
Treponema paraluiscliviculi antibodies .....	35
Treponema paraluiscliviculi (PCR).....	42
Tritrichomonas foetus (PCR).....	14, 38, 41
Troglostrongylus brevior .....	38
Troponin I.....	19
Trypanosoma evansi (canine) antibodies .....	31
Trypanosoma equiperdum antibodies.....	32
TSH .....	9, 22

## U

Uric acid .....	19
Urinalysis .....	21, 22
Urinalysis, comprehensive .....	21
Urinalysis with Aerobic Bacterial Culture and Sensitivity.....	21
Urinalysis with urine Protein:Creatinine Ratio.....	21
Urine Cortisol: Creatinine Ratio.....	21, 24
Urine Culture and Sensitivity.....	21, 51
Urine Cytology .....	22
Urine Protein: Creatinine Ratio.....	21
Urine Protein electrophoresis.....	22, 53
Usutu virus.....	41
Uveitis Profile (PCR).....	46

## V

Vaccine status cat .....	31
Vaccine status cat (gold standard).....	31
Vaccine status dog.....	30
Vector-borne diseases Profile .....	49
Viral Arteritis antibody equine .....	32
Viral Arteritis Virus equine (PCR).....	39
Viral Diarrhoea Virus - Mucosal Disease bovine.....	40
Vitamin A .....	19
Vitamin B12.....	12, 19
Vitamin D3 .....	19
Vitamin D3 (25 OH) .....	27
Vitamin E.....	19
Vitamin K1 / K1 epoxide.....	20
von Willebrand Antigen .....	17
von Willebrand Disease Type I DNA Test.....	17
von Willebrand Disease Type II DNA Test .....	17
von Willebrand Disease Type III DNA Test.....	17

## W

Weak Calf Profile.....	11
West Nile Virus antibodies (IgG).....	34
West Nile Virus antibodies (IgG + IgM) .....	32
West Nile Virus (PCR) .....	41

## X

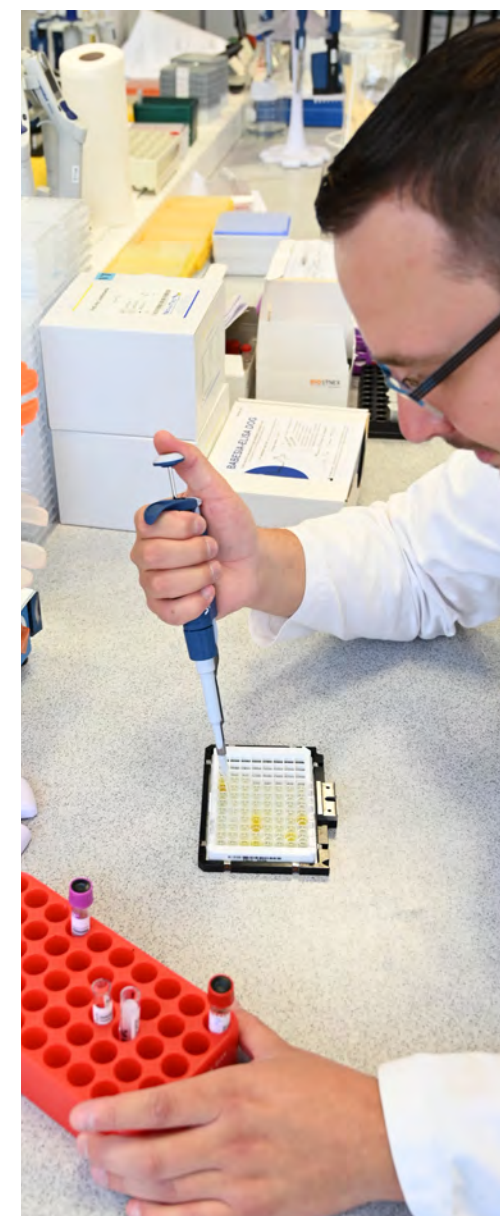
Xylitol.....	21
--------------	----

## Y

Yersinia and Campylobacter - culture.....	13
Yersinia enterocolitica (PCR) .....	38

## Z

Zinc .....	19
Zonisamide .....	20



# Why **BattLab** ?

## **Dedicated veterinary laboratory**

Diagnostic testing for veterinarians since 2005.

## **Extensive range of services**

Haematology, clinical chemistry, serology, endocrinology, microbiology, cytopathology, histopathology, allergy diagnostics, PCR and genetics.

## **Quality**

State of the art analysers, internal and external quality control systems, results validated by a clinical pathologist with the addition of comments tailored to the clinical case.

## **Courier service**

Free local courier service in the Midlands.

Free UK national courier service for the mainland.

## **Rapid turnaround time**

Same day results for selected tests from the time of arrival at BattLab.

## **Professional advice**

Experienced clinical pathologists available to give advice and discuss difficult clinical cases by phone and email.

## **Continuing professional education**

Providing free seminars, as well as attending and presenting at congresses in the UK and internationally.

## **Research/innovation**

Providing support and collaboration to research laboratories and Universities.

## **Special prices and discounts based on monthly spending**

