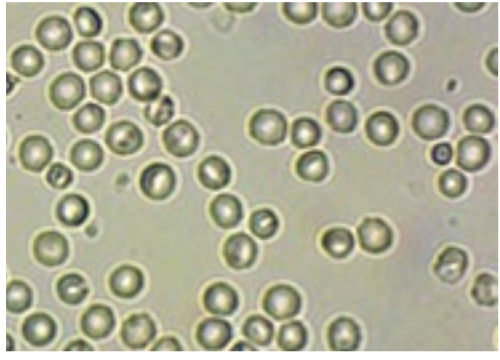
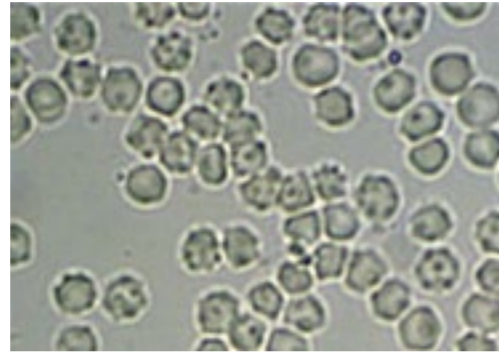




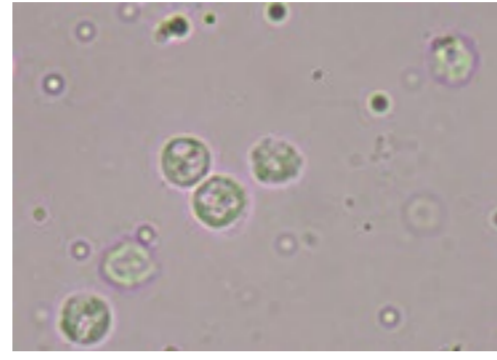
Urine Sediment



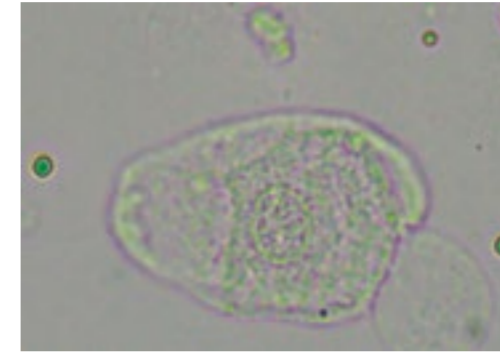
Erythrocytes



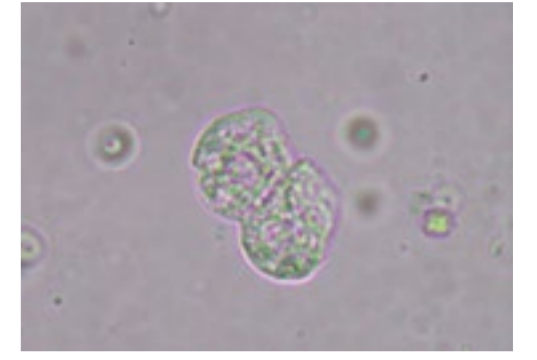
Crenated red blood cells



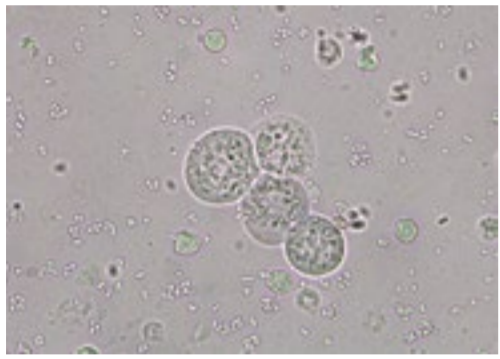
Leukocytes



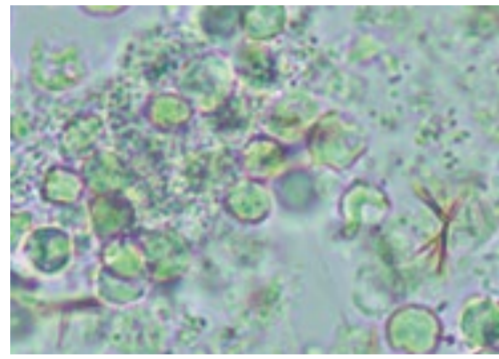
Squamous epithelial cell



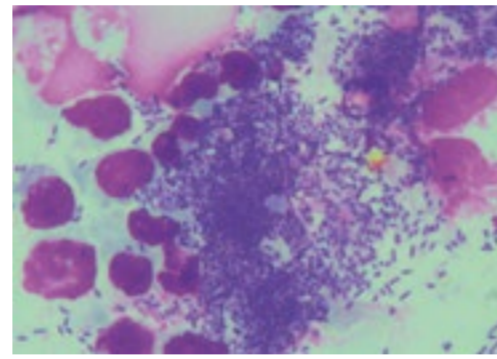
Transitional epithelial cells



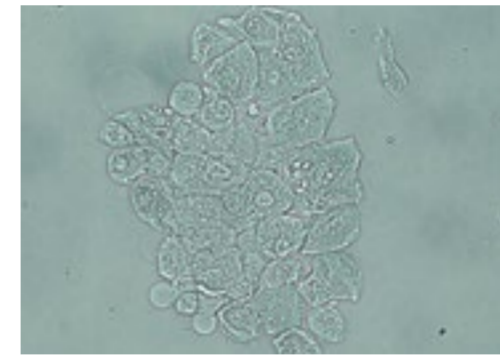
Epithelial cells, leukocytes, and bacteria



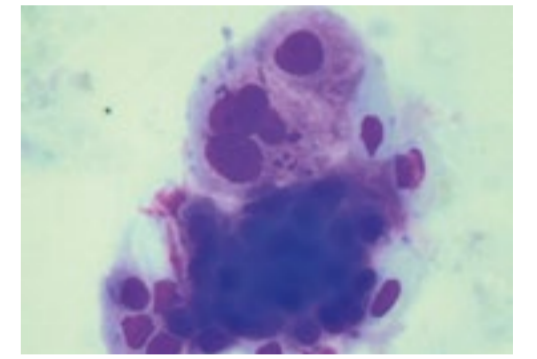
Leukocytes, bacteria, and bilirubin crystal - unstained



Leukocytes, bacteria - stained



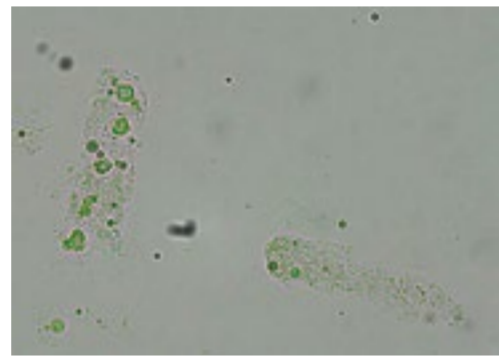
Cluster of transitional epithelial cells - unstained



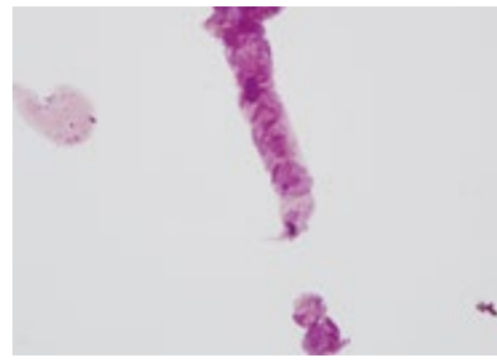
Cluster of atypical transitional epithelial cells - transitional cell carcinoma - stained



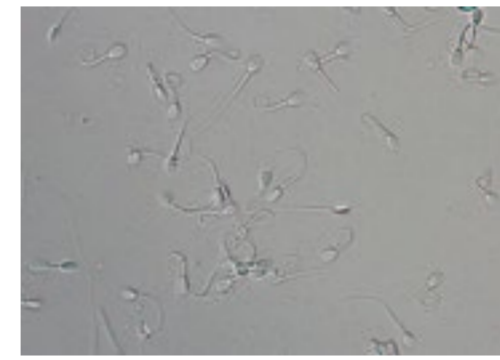
Granular cast



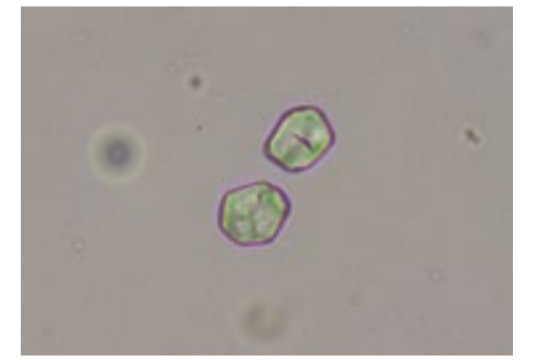
Hyaline casts with fat droplets



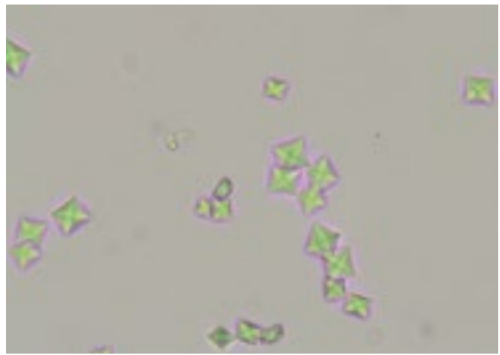
Cellular cast - stained



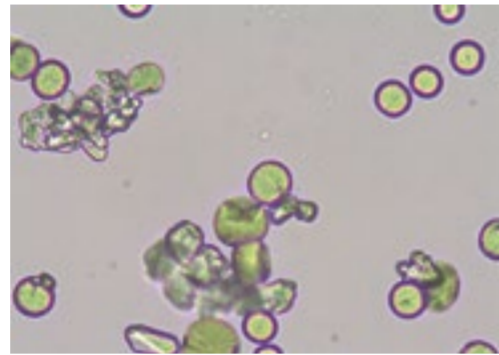
Spermatozoa



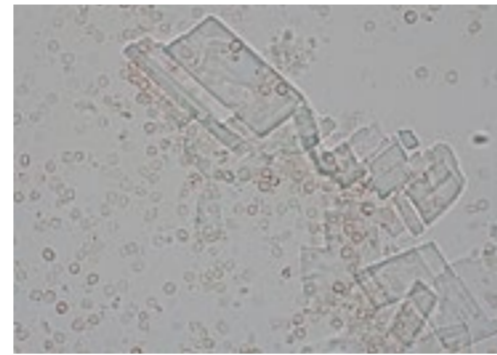
Starch granules



Calcium oxalate dihydrate crystals



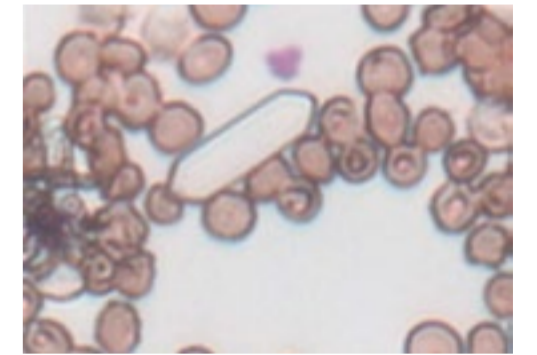
Calcium carbonate crystals



Cholesterol crystals



Struvite crystals



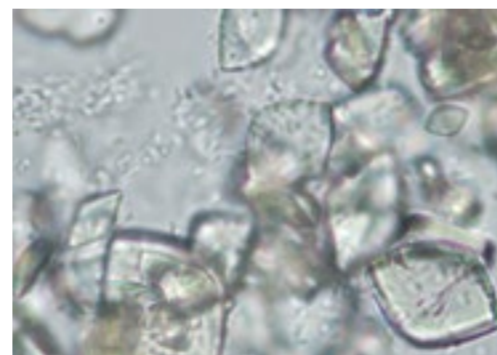
Calcium oxalate monohydrate - Ethylene Glycol toxicity



Ammonium urate crystals



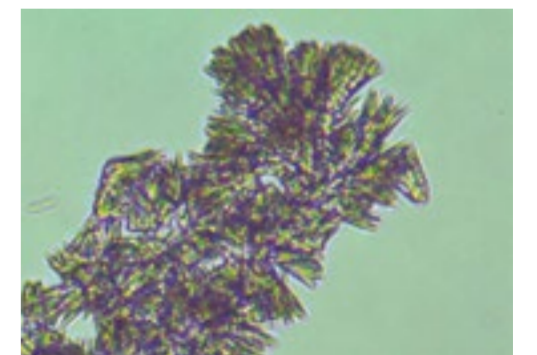
Bilirubin crystals



Uric acid crystals



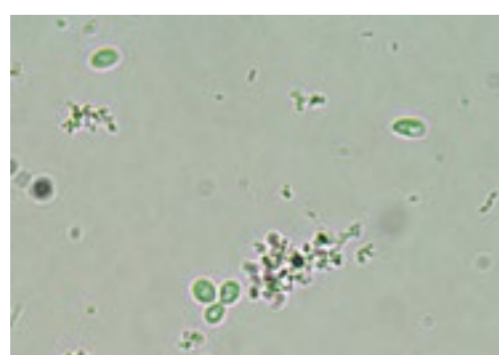
Cystine crystals



Drug-associated crystals



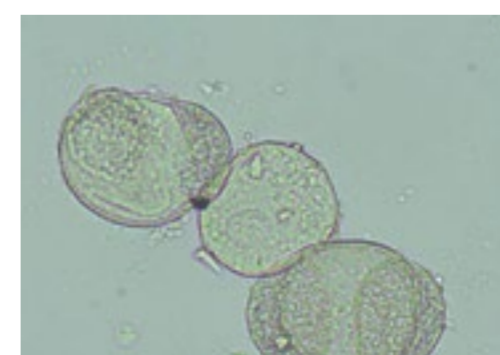
Pearsonema plica
(syn. *Capillaria plica*)



Yeast and bacteria



Fungal hyphae



Pollen grains



Fibre