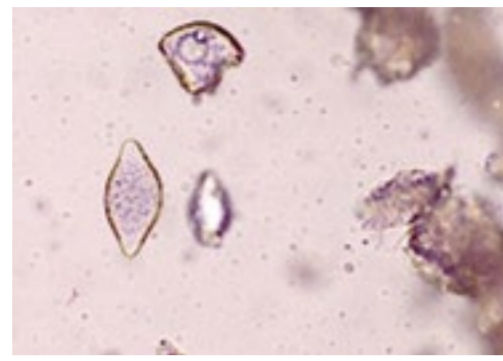
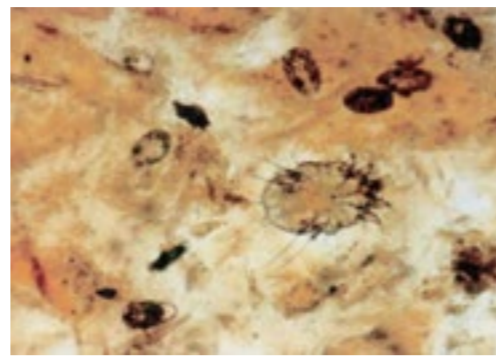


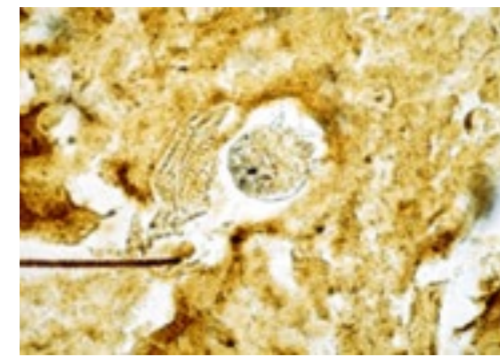
Demodex mite



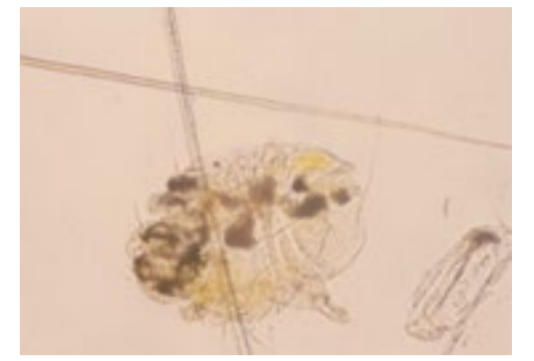
Demodex egg



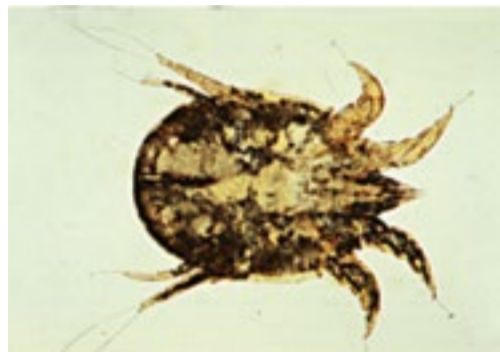
Sarcoptes scabiei



Notoedres cati



*Cheyletiella mite
and egg*



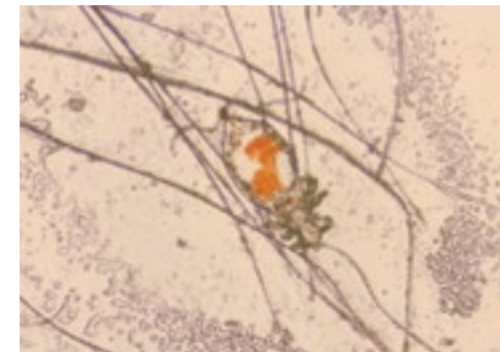
Psoroptes cuniculi



Flea larva and egg



Flea



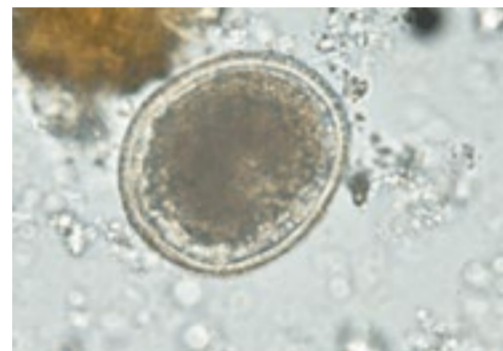
Louse



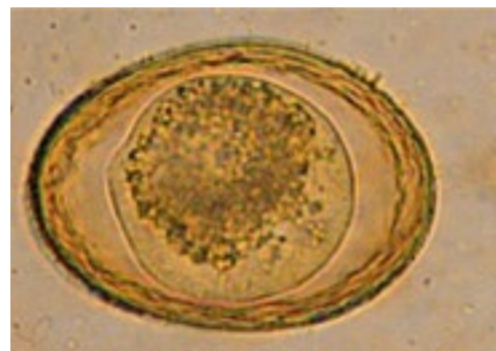
*Trichodectes species
louse*



Tick



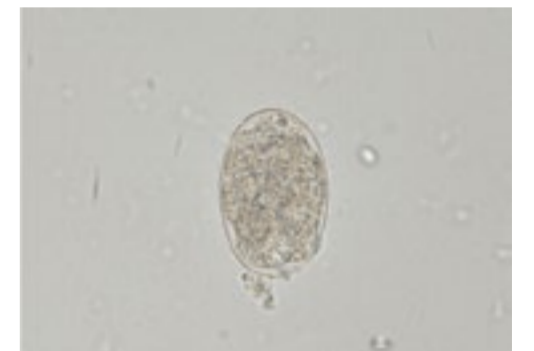
Toxocara species



Toxascaris species



Parascaris equorum

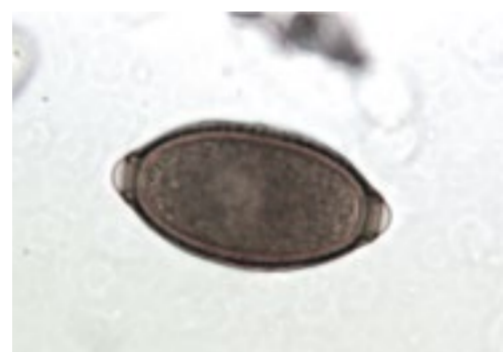


Ancylostoma species

Ecto-, Endo-, and Haemoparasites



Trichuris species



*Eucoleus species
(Capillaria species)*



*Aelurostrongylus
abstrusus*



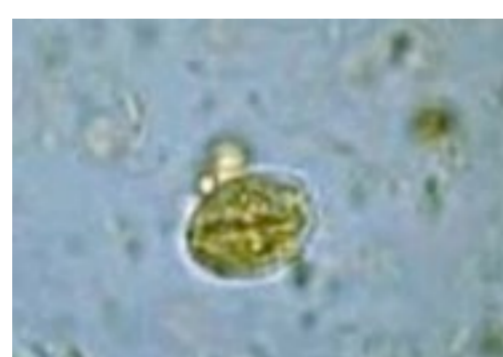
Taenia species



Dipylidium egg packet



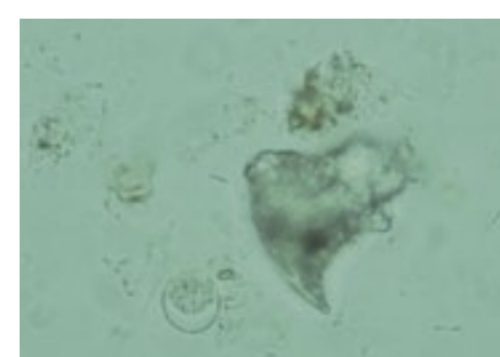
Fasciola hepatica



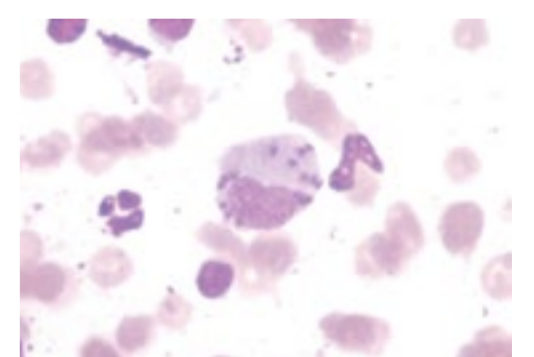
Giardia species



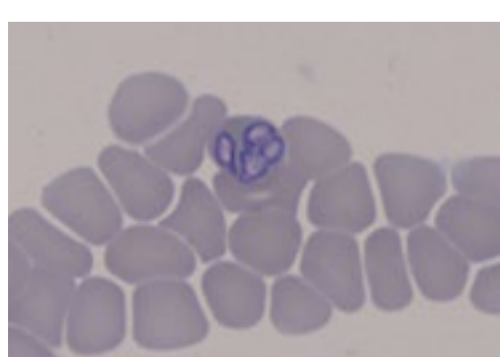
Sarcocystis species



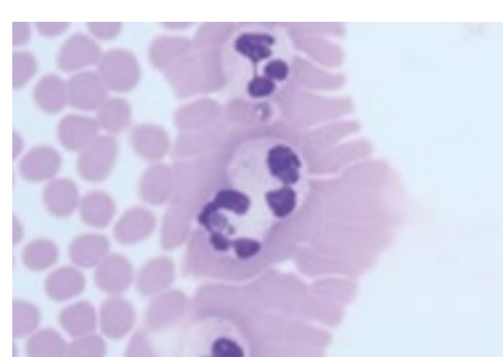
Toxoplasma gondii



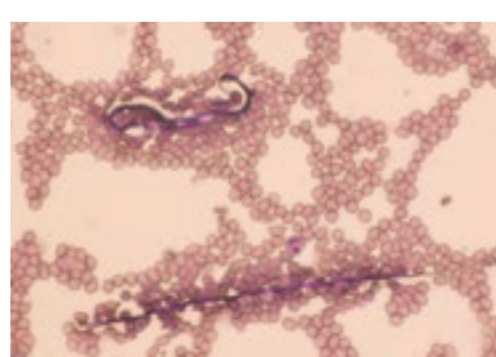
Leishmania species



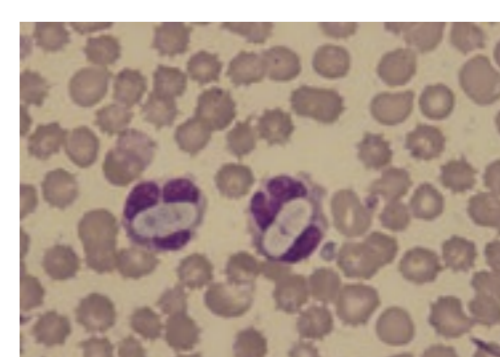
*Large Babesia
species*



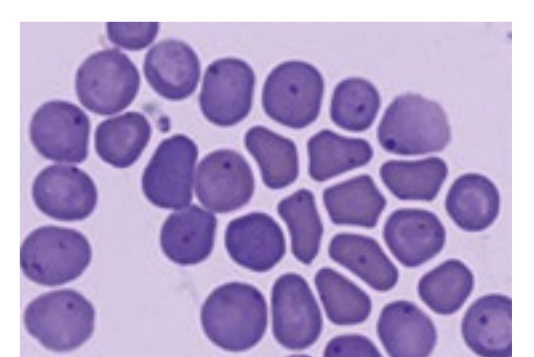
*Anaplasma
phagocytophilum*



Microfilariae



Hepatozoon species



*Mycoplasma
haemofelis*